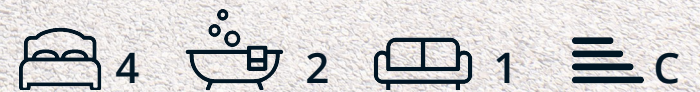




71 Sutton Spring Wood

Calow, Chesterfield, S44 5XF

Guide Price £650,000



71 Sutton Spring Wood

Calow, Chesterfield, S44 5XF

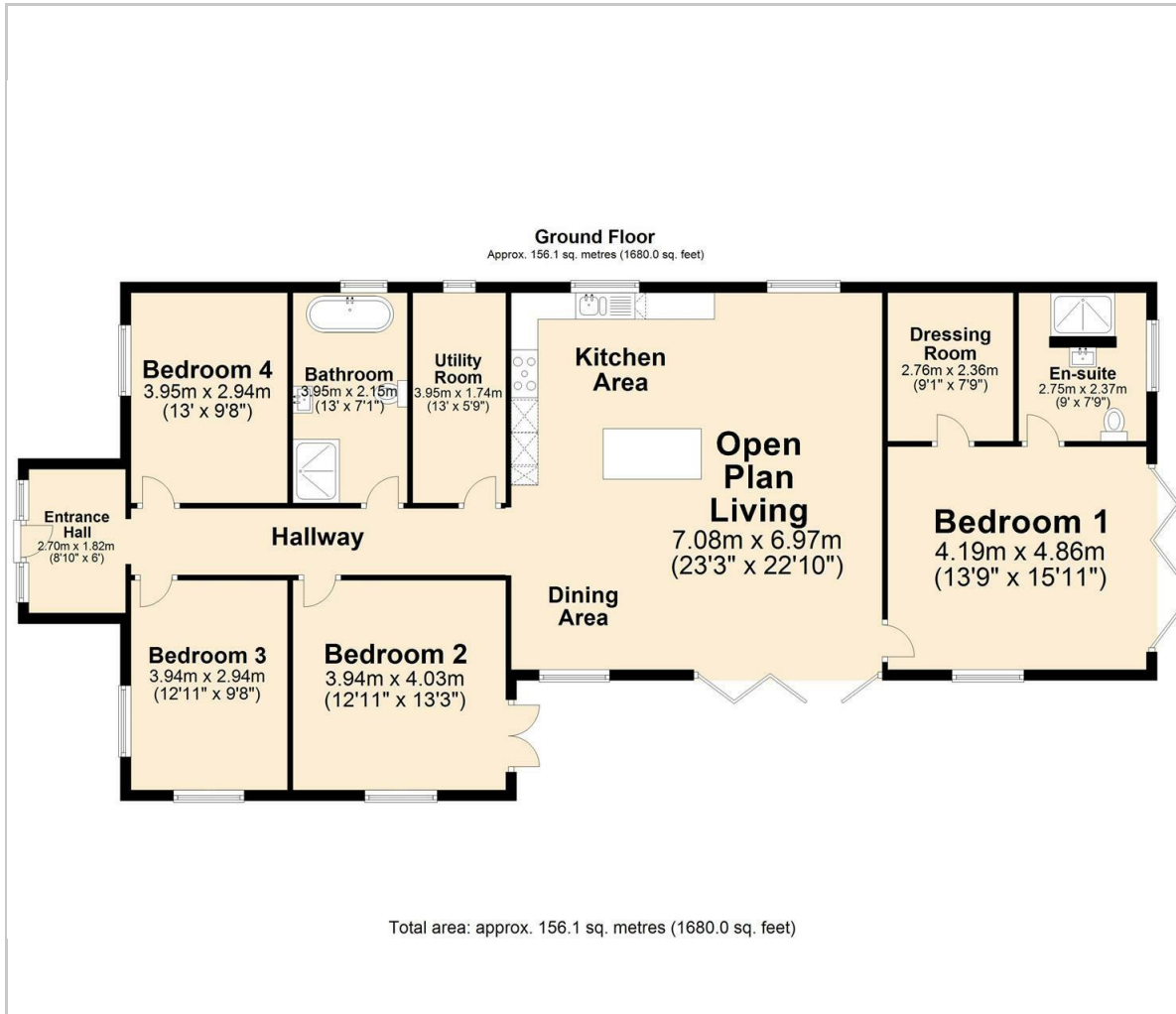
Guide Price £650,000 - £675,000
Tranquillity, eco friendly and stylish, this bespoke new-build property sits in the heart of stunning woodland and is surrounded by picturesque countryside and peaceful walks, whilst being within close proximity to Chesterfield centre and transport links. Designed around natural light and free-flowing space, the home enjoys vaulted ceilings and open plan accommodation. Offer 1680 sqft of accommodation, the property features an open kitchen with living and dining space and bi-folds to the garden, an impressive master suite with dressing room and en-suite, stylish bathrooms, spacious bedrooms and lavish interior design throughout.

The accommodation comprises; island kitchen with solid quartz worktops and integrated appliances, marble tiled open plan living and dining space, separate utility room, main bathroom with freestanding bath and rain shower, spacious bedrooms including the impressive master suite with dressing room and en-suite shower room.

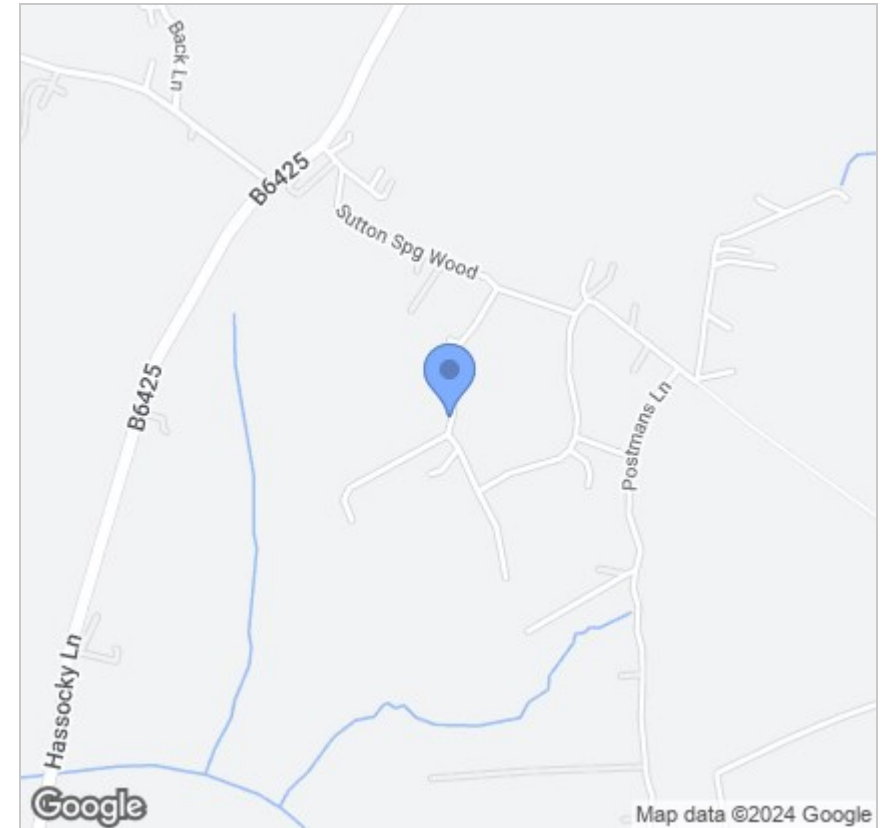




Floor Plan



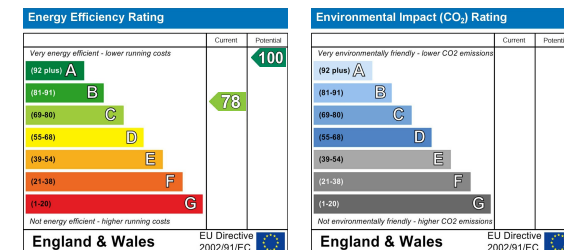
Area Map



Viewing

Please contact our Matlock Office on 01629 700246 if you wish to arrange a viewing appointment for this property or require further information.

Energy Efficiency Graph



These particulars, whilst believed to be accurate are set out as a general outline only for guidance and do not constitute any part of an offer or contract. Intending purchasers should not rely on them as statements of representation of fact, but must satisfy themselves by inspection or otherwise as to their accuracy. No person in this firm's employment has the authority to make or give any representation or warranty in respect of the property.



2 Dale Road, Matlock, Derbyshire, DE4 3LT
T: 01629 700246

E: info@dalesandpeaks.co.uk
www.dalesandpeaks.co.uk