



29 Stanton Moor View  
, Matlock, DE4 3NE

£365,000

 4  2  3  D



## 29 Stanton Moor View

, Matlock, DE4 3NE

•• 3D TOUR •• £365,000 (Asking price)  
A spacious and well presented 4 bedroom detached property, situated in a highly desirable location, within close proximity of local amenities. Offering 1138 sqft of accommodation over two floors and benefitting from off street parking, decked seating area to the front and patio garden to the rear.

The ground floor comprises; entrance hallway, family living room with gas fire, downstairs bedroom/second reception room, WC and utility room, open plan kitchen dining area with integrated appliances, leading to the conservatory with access onto the rear garden.

The first floor comprises; master bedroom with ensuite shower room, two further generous bedrooms and family bathroom.

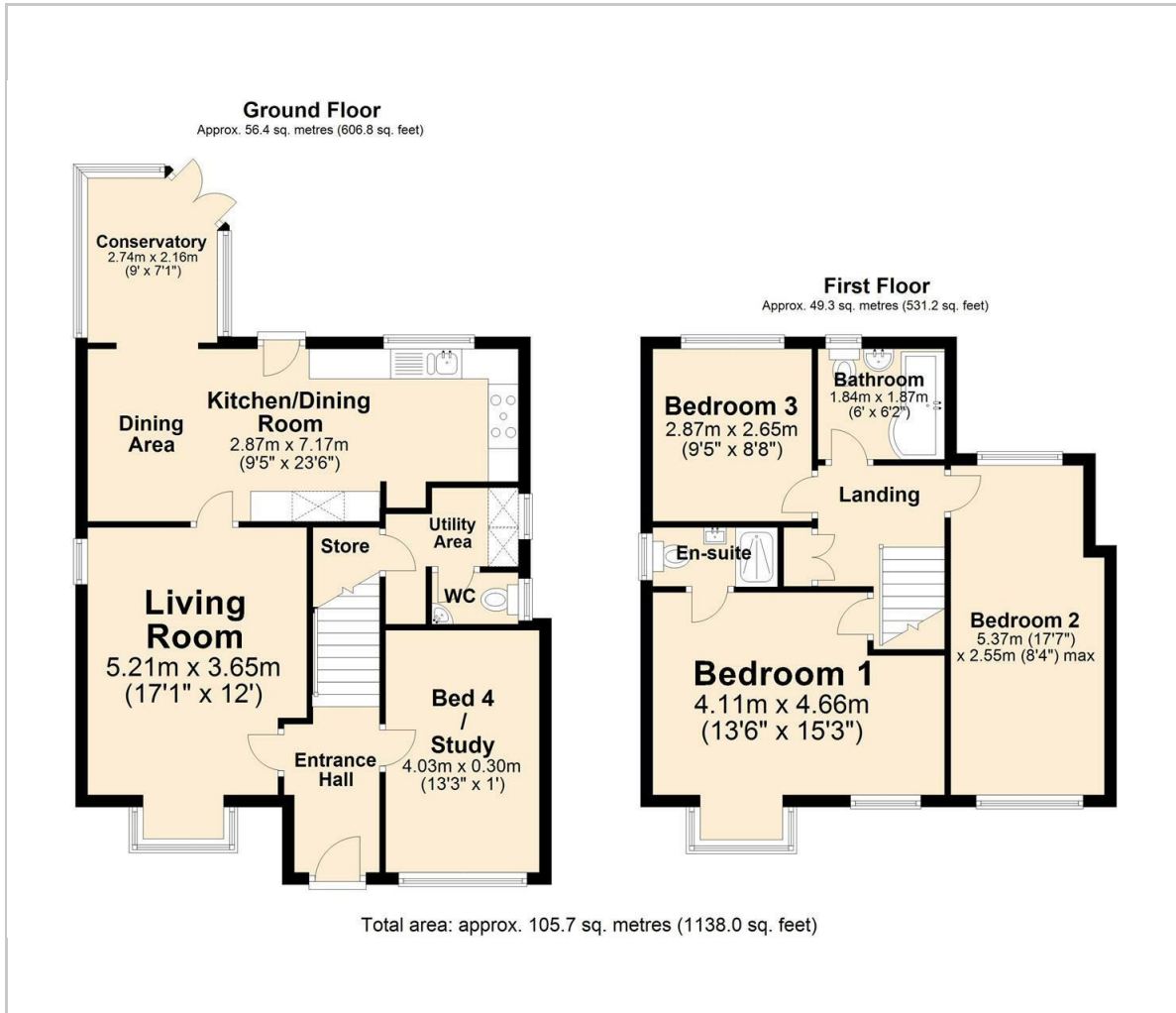








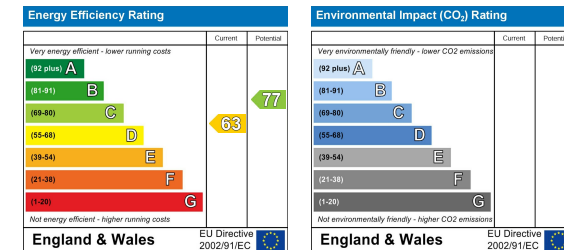
## Floor Plan



## Area Map



## Energy Efficiency Graph



## Viewing

Please contact our Matlock Office on 01629 700246 if you wish to arrange a viewing appointment for this property or require further information.

These particulars, whilst believed to be accurate are set out as a general outline only for guidance and do not constitute any part of an offer or contract. Intending purchasers should not rely on them as statements of representation of fact, but must satisfy themselves by inspection or otherwise as to their accuracy. No person in this firm's employment has the authority to make or give any representation or warranty in respect of the property.

