



Yew Tree Lodge New Road

Alderwasley, Belper, DE56 2SQ

£1,425,000

Yew Tree Lodge New Road

Alderwasley, Belper, DE56 2SQ

•• 3D TOUR •• £1,425,000 (Offers in the region of) A truly beautiful countryside home, situated in the picturesque village of Alderwasley. Centrally occupying manicured, gated grounds, Yew Tree Lodge boasts approximately 6 acres in this stunning rural setting and features a long sweeping driveway approaching the property through the beautiful manicured gardens, stables, paddocks and a detached triple garage with self contained annex accommodation.

The overall accommodation offers 4950 sqft and features a beautifully styled kitchen with integrated appliances and solid marble worktops, 4 reception rooms including the family lounge, formal dining room, separate snug and a conservatory with the most idyllic views. There is also a large gallery landing leading to four double bedrooms, including 3 en-suite bedrooms, the family bathroom with separate bath and shower. The property also features a side entrance with utility area, boot room, downstairs WC and access to a further bedroom or fantastic work-from-home space.

Grounds

The Annex

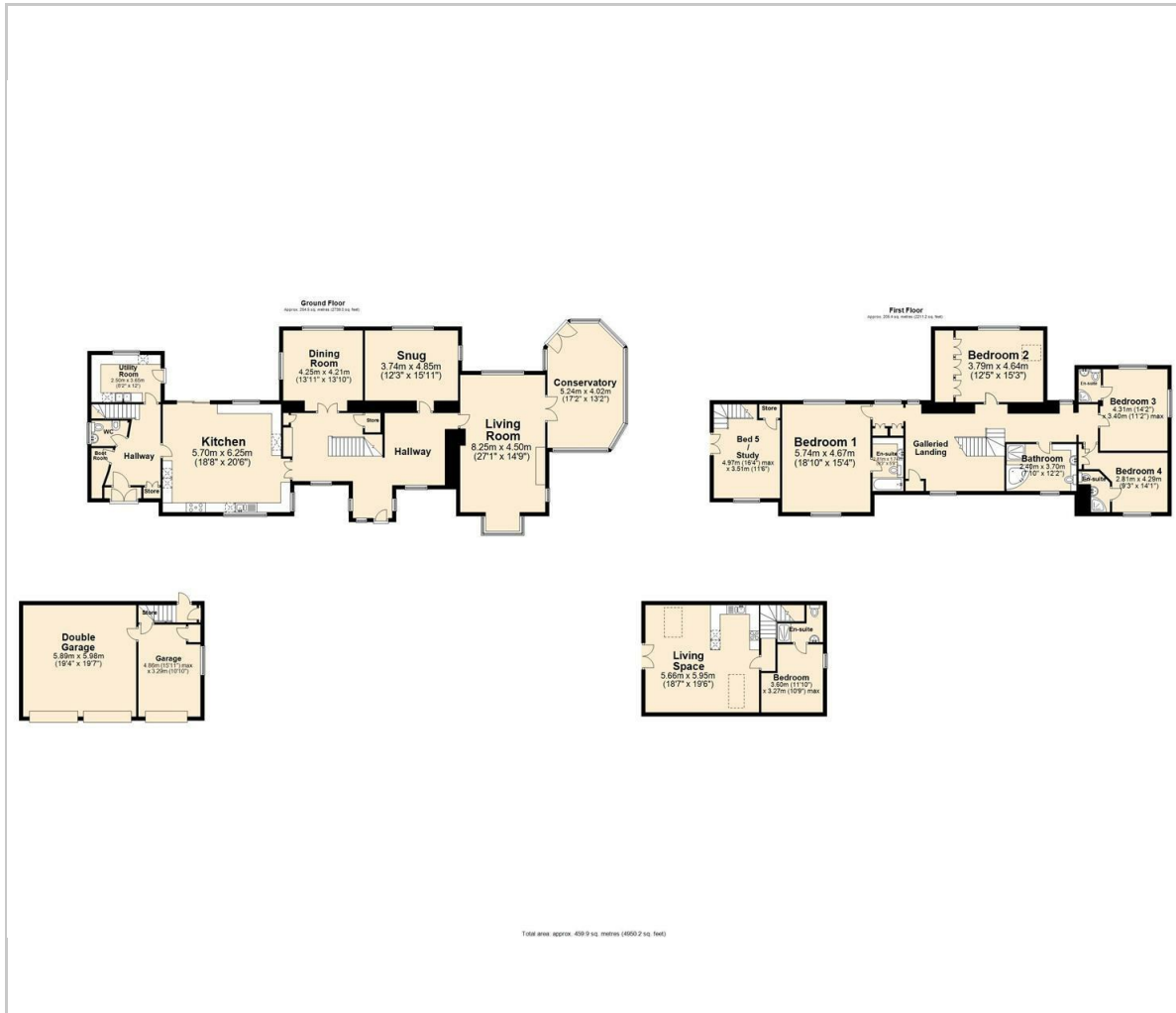
The ground floor comprises;

The first floor comprises;





Floor Plan



Viewing

Please contact our Matlock Office on 01629 700246 if you wish to arrange a viewing appointment for this property or require further information.

These particulars, whilst believed to be accurate are set out as a general outline only for guidance and do not constitute any part of an offer or contract. Intending purchasers should not rely on them as statements of representation of fact, but must satisfy themselves by inspection or otherwise as to their accuracy. No person in this firm's employment has the authority to make or give any representation or warranty in respect of the property.

Area Map



Energy Efficiency Graph

