

ANWYL
thoughtful homes

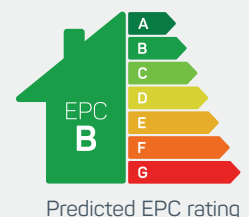


the caernarfon at stonebridge fold

4 bed detached with double garage

A *spacious* family home. Key features include high ceilings, an open plan kitchen dining and family room with French doors, a double garage, separate living room, media room and a large utility.

www.anwylhomes.co.uk





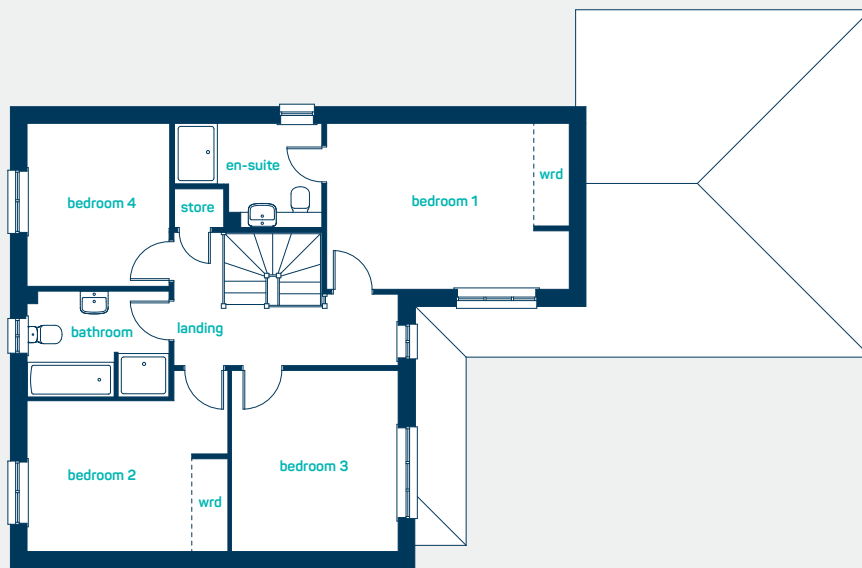
ideal for
modern family living



ground floor

| | |
|---------------------------|---------------|
| kitchen/ dining/family | 27'9" x 12'3" |
| utility | 6'11" x 6'7" |
| living room | 16'4" x 10'8" |
| media room | 10'9" x 10'7" |
| cloaks | 6'7" x 4'1" |

| | |
|---------------------------|---------------|
| kitchen/ dining/family | 8.45m x 3.73m |
| utility | 2.1m x 2m |
| living room | 4.98m x 3.26m |
| media room | 3.27m x 3.23m |
| cloaks | 2m x 1.25m |



first floor

| | |
|-----------|---------------|
| bedroom 1 | 15'9" x 10'9" |
| en suite | 9'6" x 6'9" |
| bedroom 2 | 13' x 11'9" |
| bedroom 3 | 11'9" x 10'9" |
| bedroom 4 | 10'6" x 9'2" |
| bathroom | 9'2" x 6'9" |

| | |
|-----------|---------------|
| bedroom 1 | 4.79m x 3.27m |
| en suite | 2.89m x 2.06m |
| bedroom 2 | 3.95m x 3.57m |
| bedroom 3 | 3.57m x 3.28m |
| bedroom 4 | 3.2m x 2.8m |
| bathroom | 2.8m x 2.07m |

the caernarfon
at stonebridge fold
4 bed detached with double garage

www.anwyhomes.co.uk

ANWYL
thoughtful homes

**NEW
HOMES
QUALITY
CODE**

**NEW HOMES
OMBUSMAN
SERVICE**

Anwyl Homes is a Registered Developer with the NHQB. This is a computer-generated image of the caernarfon, elevation treatment may vary. Room sizes are approximate, dimensions are taken from the longest room point (please consult homes advisor for measurement points). Plots may be handed and any garages may be single or double. Kitchen and bathroom layouts are indicative. These plans are correct at the time of going to press, but may be subject to change during construction. Please ensure that you check for specific plot details. 01/11/22.

everything considered.