



2 Floors



4 Bedrooms



Utility



1 En suite

WARWICK FOUR BEDROOM HOME

A four bedroom detached home with spacious lounge and fantastic open plan kitchen / dining and family area featuring a bay window and French doors leading to the rear garden. Upstairs, is the family bathroom and four bedrooms, the master bedroom benefitting from fitted wardrobes and en suite facilities.

WARWICK FOUR BEDROOM HOME

⬢ DIMENSIONS

First Floor:

Bedroom 1

2.88m x 3.56m
9'6" x 11'8"

En Suite

Bedroom 2

3.85m x 2.64m
12'7" x 8'8"

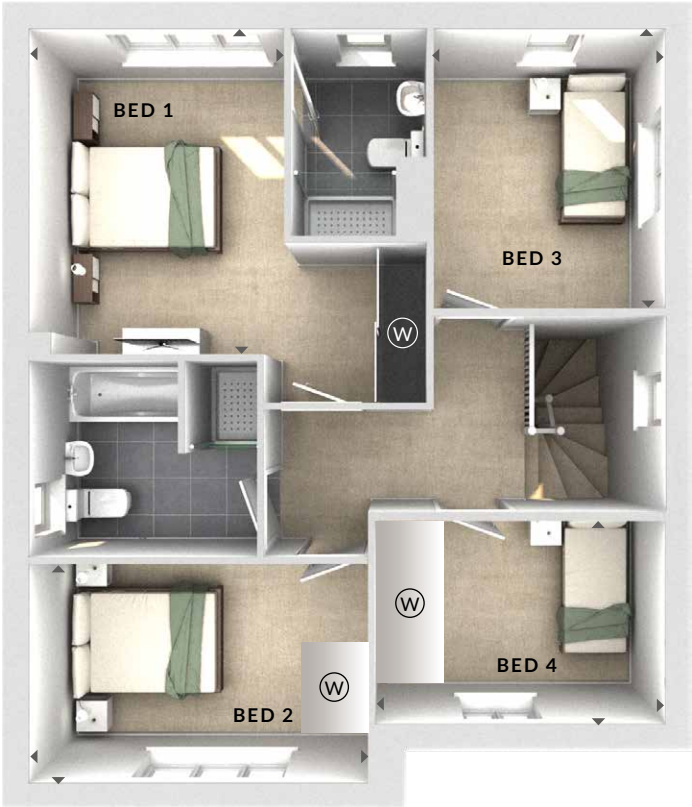
Bedroom 3

2.61m x 3.15m
8'7" x 10'4"

Bedroom 4

3.28m x 2.29m
10'9" x 7'6"

Bathroom



First Floor

Lounge

4.11m x 4.15m
13'6" x 13'7"

Kitchen / Dining / Family

7.95m x 4.25m
26'1" x 13'11"

(W) Wardrobes

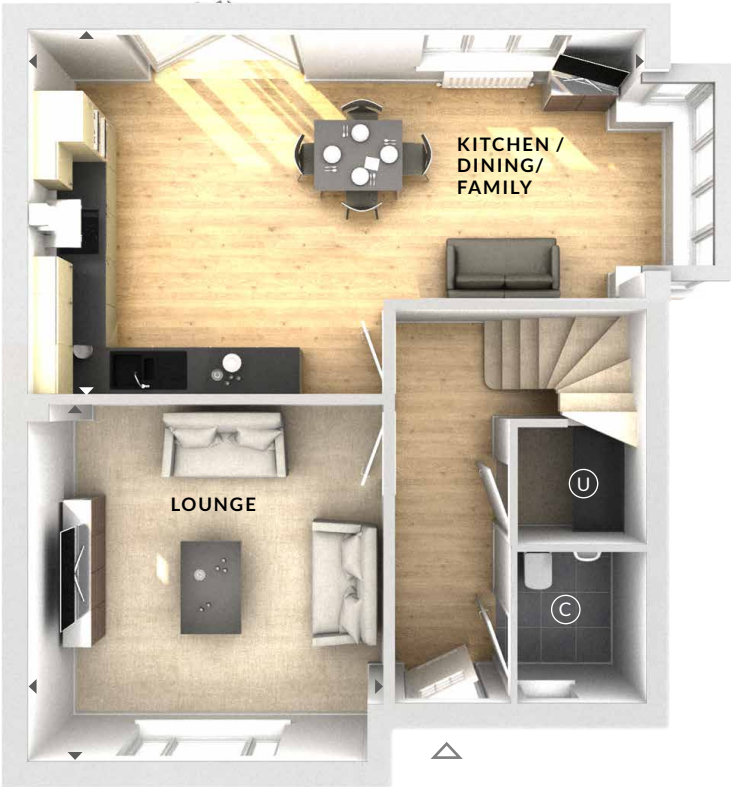
*Wardrobes to bed 2 & 4 indicated in selected plots only. Please speak to Sales Advisor for details.

(U) Utility

(C) Cloaks

◀ ▶ Measurement Points

△ External Access



Ground Floor