



2 Floors



4 Bedrooms



2 En suites



Home Office

## PEELE FOUR BEDROOM HOME

A four bedroom detached home featuring a generously sized lounge, study, an outstanding open plan kitchen / dining / family area with a utility cupboard and French doors opening onto the rear garden. Upstairs is home to four double bedrooms, two with an en suite shower room and the master bedroom complete with fitted wardrobes.

# PEELE FOUR BEDROOM HOME

## ⬢ DIMENSIONS

### First Floor:

**Bedroom 1**  
2.77m x 3.81m  
9'1" x 12'6"

#### En Suite

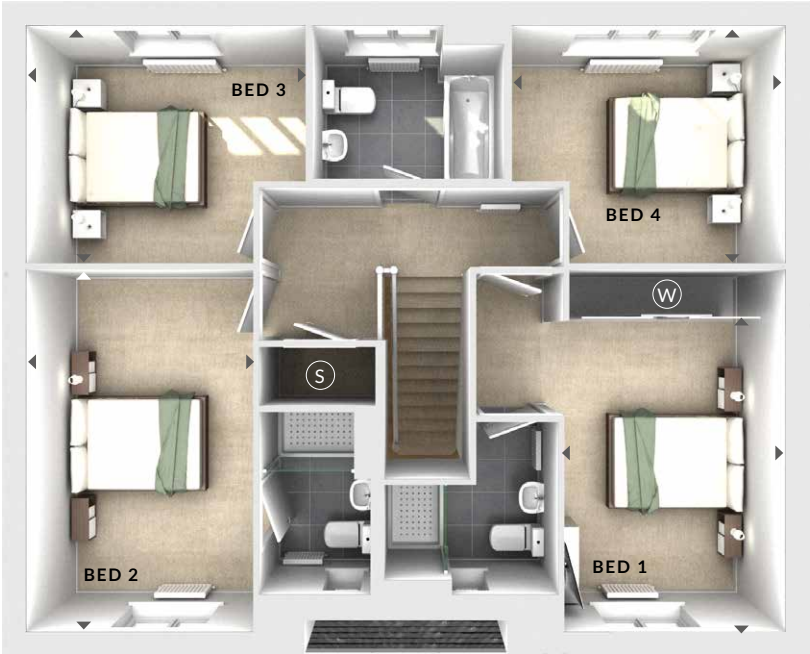
**Bedroom 2**  
2.85m x 4.56m  
9'4" x 14'11"

#### En Suite

**Bedroom 3**  
3.50m x 2.98m  
11'6" x 9'9"

**Bedroom 4**  
3.42m x 3.08m  
11'3" x 10'1"

#### Bathroom



First Floor

### Ground Floor:

**Lounge**  
3.81m x 4.94m  
12'6" x 16'2"

**Kitchen / Dining / Family**  
9.28m x 3.70m  
30'5" x 12'1"

**Study**  
3.16m x 2.12m  
10'4" x 6'11"

(S) Storage

(C) Cloaks

(W) Wardrobes

(U) Utility

◀▶ Measurement Points

△ External Access



Ground Floor