



HEARTWOOD
HOMES

Woodfield Way, St. Albans, AL4 9RX

£850,000

3 1 1



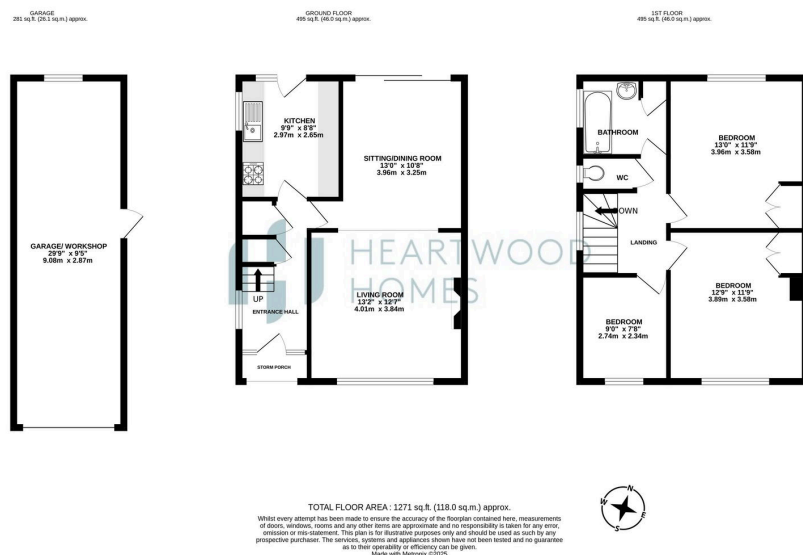
A lovely chain-free three-bedroom semi-detached home, built by the well-regarded Nash builders and tucked away in the ever-popular Marshalswick area of St Albans. Not only is this a fantastic home, but it also offers an enviable lifestyle, with highly regarded primary and secondary schools close by and a great selection of shops, cafés, and places to eat just a short stroll away.

The property does need some updating, but it's packed with potential and offers plenty of scope to extend (subject to planning). Inside, you'll find a welcoming hallway, a spacious living/dining room, and a good-sized kitchen at the rear, both opening out onto the garden. Upstairs are three well-proportioned bedrooms and a family bathroom.

Outside, there's hardstanding to the front providing plenty of off-street parking and access to the garage. The mature rear garden is an excellent size – perfect for family life or simply relaxing outdoors.

With its superb location and exciting potential, this is a home not to be missed. Get in touch today to arrange your viewing!





- Chain-free three-bedroom semi-detached home
- Located in popular Marshalswick, St Albans
- Short walk to shops, cafés, and eateries
- Off-street parking and garage
- Built by the well-regarded Nash builders
- Within priority area for sought-after schools
- Spacious living/dining room and kitchen
- Generous mature rear garden
- Excellent potential to update or extend (STPP)
- EPC Grade D

