



HEARTWOOD
HOMES

Burr Close, London Colney, St. Albans, AL2 1RD

Offers Over £400,000

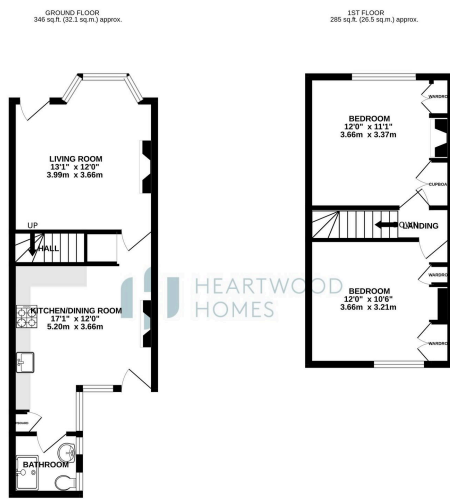
🛏️ 2 🚿 1 🚿 1



A charming two double bedroom character cottage, formerly the original stables to the historic Green Dragon pub, offering picturesque views over the River Colne. Set on a peaceful no-through road, the property is ideally located within easy reach of local amenities.

Beautifully presented throughout, the accommodation includes a cosy living room, a well-appointed kitchen/breakfast room, a ground floor shower room, and two generously sized double bedrooms. Outside, the home features a spacious front garden with potential for off-street parking and a private rear courtyard garden, perfect for outdoor relaxation





HEARTWOOD HOMES

TOTAL FLOOR AREA: 631 sq ft (58.4 sq m) approx.
When every effort has been made to ensure the accuracy of the figures contained herein, measurements of floors, to some extent, may vary due to the construction and construction methods used in the preparation of the plans. The actual construction may vary from the plans and the quantities are for guidance only. The figures are approximate and should not be used for any legal purpose.

- Charming two double bedroom character cottage
- Formerly the original stables to the historic Green Dragon pub
- Well-presented throughout with a blend of period charm and modern comfort
- Generously sized double bedrooms with ample natural light
- Private rear courtyard garden ideal for relaxing or entertaining
- Picturesque views over the River Colne
- Peacefully positioned on a quiet no-through road
- Cosy living room and a spacious kitchen/breakfast room
- Large front garden with potential for off-street parking
- EPC rating C



HEARTWOOD HOMES



HEARTWOOD HOMES