





# Eagle Way, St Albans, Hertfordshire, AL4 0LH

£700,000

3 2 1



Welcome to this beautifully presented, chain free, three-bedroom family home, set in the highly sought-after Oaklands Grange development. Perfectly positioned, it's close to some of the area's top schools, including Beaumont and Oakwood, as well as the handy shops and cafés at The Quadrant. You'll also have lovely countryside walks on your doorstep and be just a short trip from the vibrant St Albans city centre.

Built by Taylor Wimpey to a high standard, this home has been further enhanced by the current owners. Step inside to a spacious entrance hall with built-in storage, leading to a stylish living room and a generously sized ground-floor W.C. The modern kitchen sits at the rear, featuring integrated appliances and sleek stone worktops. With direct access to the garden, it's a bright and airy space perfect for everyday living.

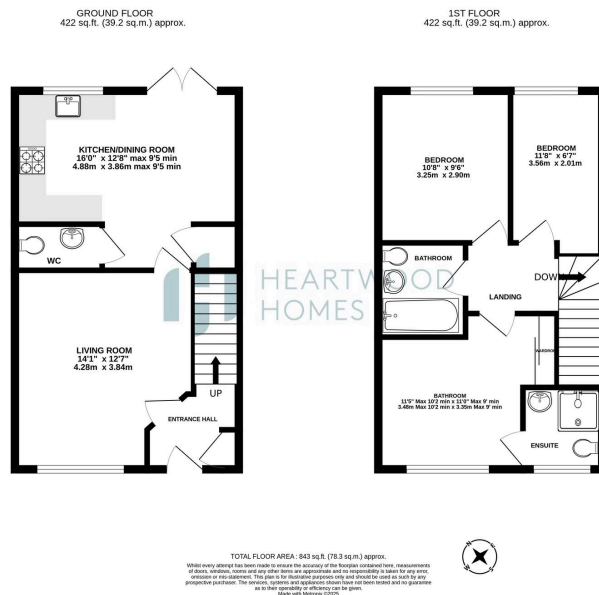
Upstairs, you'll find three well-proportioned bedrooms, , an ensuite and built-in storage to the master, and a stylish family bathroom.

Outside, the front garden is neatly maintained with ample off-street parking, while the landscaped rear garden boasts a large patio—ideal for entertaining or simply unwinding.

Interested? Get in touch today to arrange a viewing!







- EPC Grade B
- Ample off street parking
- Landscaped garden with large patio.
- Kitchen opens to a bright garden space
- Three well-sized bedrooms upstairs.
- Short trip to St Albans city centre.
- Spacious living room and modern kitchen.
- Offered with no onward chain
- Close to top schools, shops, and cafés.
- Beautifully presented three-bedroom family home.

