



HEARTWOOD
HOMES

Beningfield Drive, London Colney, St. Albans, AL2 1UX

£800,000

🛏 3 🚿 2 🛋 2



Encompassed by the magnificent Napsbury Park, a beautiful setting amongst acres of Grade II Listed parkland, yet still offering excellent access to the motorway networks, extensive local shopping facilities and close to highly sought after local schooling. St Albans vibrant city centre is only a short drive away, offering a wide variety of shops, pubs, eateries and the mainline station with direct access to central London.

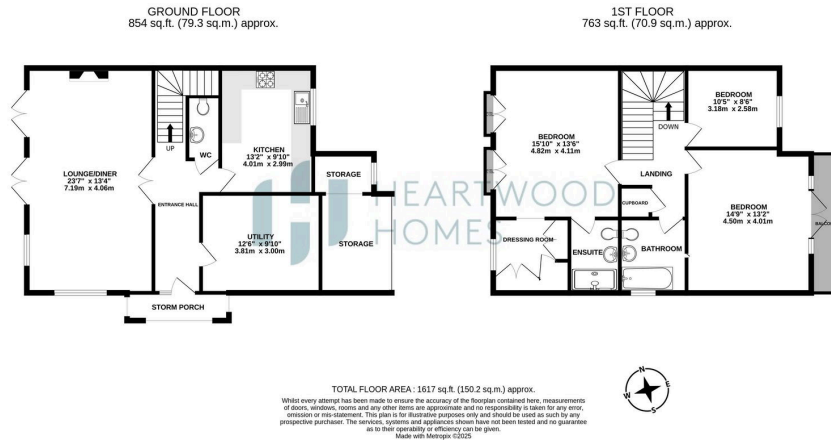
This bright and spacious three-bedroom family home offers fantastic accommodation set over two floors. Through the storm porch you move into the large entrance hallway with access to all ground floor rooms, including the ground floor W.C. To the left is a large living/ dining room with two sets of double doors to the garden. To the left there is a modern kitchen and a great size utility.

Upstairs you have three generous double bedrooms. The master bedroom has the added benefit of both ensuite facilities and a well-proportioned dressing room. The second bedroom has direct access to a balcony with views across the development and you have an attractive family bathroom.

Externally there is a well-kept and enclosed garden with a lovely sunny aspect. Furthermore, there is ample external storage and two off street parking spaces.

This wonderful home is offered chain free and we expect it to be very popular, so please book your appointment to view today.





- Set in stunning Grade II Listed Parkland
- Chain free
- Three Double bedrooms
- Master bedroom with ensuite and dressing room
- Attractive enclosed garden with a sunny aspect
- Two parking spaces
- EPC Grade C

