



HEARTWOOD
HOMES

Langley Grove, Sandridge, St. Albans, AL4 9DS

£700,000

🛏 4 🍽 2 🛋 2



sought-after residential road in the charming village of Sandridge. This picturesque village offers a great selection of country pubs, a local shop, and is within easy reach of highly regarded schools. Just moments away, you'll find Heartwood Forest, offering stunning woodland and countryside walks—perfect for nature lovers. Plus, with St Albans City Centre and Harpenden just a short drive away, you have fantastic access to rail links into London St Pancras, as well as a wide variety of shopping and leisure facilities.

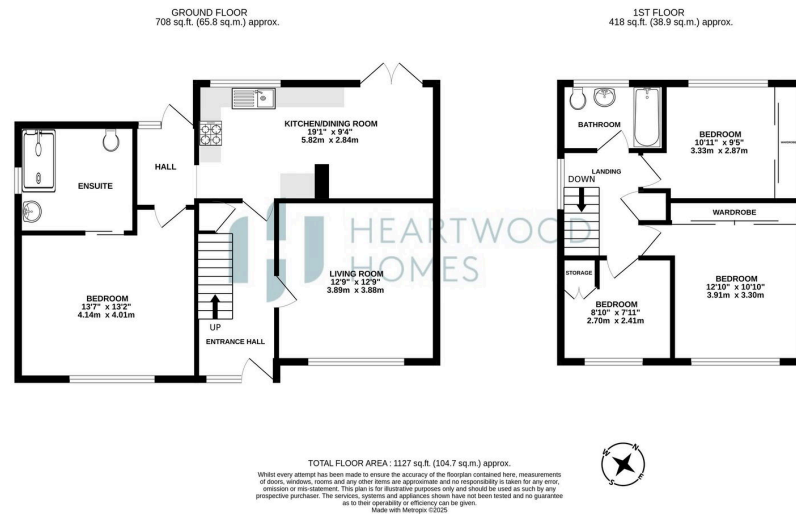
This delightful home provides spacious and versatile accommodation. Step into a welcoming entrance hall, leading to a bright and airy living room on your left. At the rear, you'll find a generously sized kitchen/dining room with direct access to the garden—ideal for family life and entertaining. Additionally, there is a versatile snug or fourth bedroom, complete with an en-suite wet room.

Upstairs, the first floor offers three well-proportioned bedrooms and an attractive family bathroom.

Externally, the home boasts a wide frontage with a driveway providing ample parking. The enclosed rear garden is beautifully maintained and comes with a garden shed for added storage.

Don't miss out! Call us today to arrange an early viewing.





- Spacious & chain-free 3/4-bed semi-detached family home in sought-after Brightlingham village & large kitchen/diner opening to the garden.
- Three well-sized bedrooms & an attractive family bathroom upstairs.
- Enclosed rear garden, beautifully maintained with a garden shed.
- Easy access to shops, pubs & leisure facilities.
- Close to Heartwood Forest, countryside walks & great local schools.
- Versatile snug/bedroom 4 with an en-suite wet room.
- Wide frontage with a driveway providing ample parking.
- Short drive to St Albans & Harpenden, both with strong rail links to London.
- EPC Grade C

