



HEARTWOOD  
HOMES



# Hatfield Road, St Albans AL1 4JS

Guide Price £300,000

🛏 1 🚿 1 🚿 1





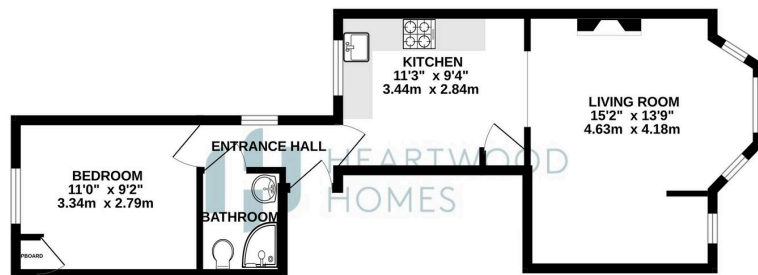
This bright and spacious first-floor apartment is situated within a charming period conversion, perfectly positioned just a short distance from St Albans mainline station and the bustling city centre, offering an excellent array of shopping and leisure options.

Immaculately presented throughout, the property provides superb accommodation. Upon entry, a communal hallway leads to your own private entrance hall. At the front of the apartment, a stunning bay-fronted living and dining room creates a fantastic space for relaxation and entertaining, seamlessly connecting to a generously sized, modern kitchen.

Off the entrance hall, you'll find a well-proportioned double bedroom and a stylish shower room, both finished to a high standard.

Adding further appeal, the property boasts a long 979-year lease. Don't miss this incredible opportunity—contact us today to arrange a viewing!





TOTAL FLOOR AREA: 450 sq ft. (41.8 sq.m.) approx.  
 Whilst every attempt has been made to ensure the accuracy of the floorplan contained here, measurements of floors, walls, rooms and any other items are approximate and no responsibility is taken for any error, omission or mis-statement. This plan is for illustrative purposes only and should be used as such for any prospective purchaser. The services, systems and appliances shown have not been tested and no guarantee as to their operability or efficiency can be given.  
 Made with Memopix 12/2025



- Benefits from a long 979-year lease—call today to arrange a viewing!
- Generously sized modern kitchen seamlessly connected to the living area
- Private entrance hall accessed via a communal hallway.
- Beautifully presented throughout with excellent accommodation.
- Ideally located near St Albans mainline station and vibrant city centre.
- Contemporary shower room designed to a high standard.
- Stunning bay-fronted living/ dining room, perfect for relaxing and entertaining.
- Offers easy access to a fantastic range of shopping and leisure facilities
- EPC rating C
- Bright and spacious first-floor apartment within a charming period conversion

