



HEARTWOOD
HOMES

Elizabeth Court, St. Albans, AL4 9JD

£525,000

3 1 2



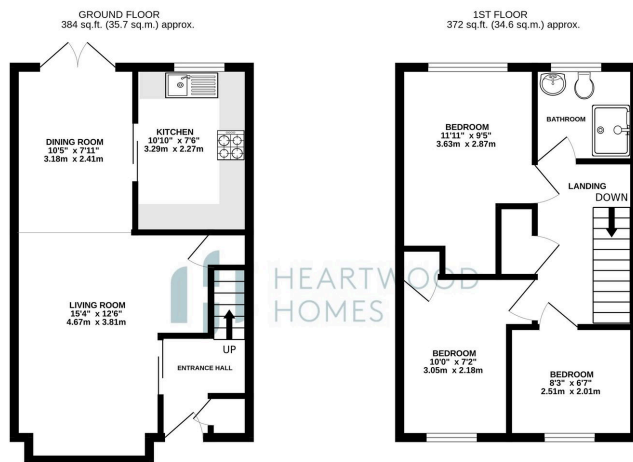
A beautifully presented, three-bedroom family home, perfect for modern living. Nestled in the sought-after Jersey Farm area of St Albans, this property enjoys a fantastic location close to excellent schools, a variety of local shops and eateries, and the stunning Jersey Farm Woodland Park and Heartwood Forest.

The home offers flexible living space, starting with a welcoming canopy porch leading to the entrance hall. At the front, you'll find a generous bay-fronted living room, while the rear features a bright and airy kitchen and dining area that opens onto the garden – an ideal space for family life. Upstairs, there are three well-sized bedrooms and a stylish family bathroom.

Outside, the property boasts a neatly kept front garden and a beautifully landscaped, enclosed rear garden – perfect for relaxing or entertaining. There's also the added bonus of a garage nearby for extra storage or parking.

Don't miss out – give us a call today to book your viewing!





TOTAL FLOOR AREA: 757 sq.ft. (70.3 sq.m.) approx.
While every effort has been made to ensure the accuracy of the figures contained here, measurements of doors, windows, rooms and any other items are approximate and no responsibility is taken for any error, omission or mis-statement. The plan for the purposes of the advertisement only and should be used as such for any prospective purchaser. The plan is not a contract. The plan is not a guarantee and no guarantee as to the quality or efficiency can be given.
 Drawn with Metaphor 12/24



- Located in the sought-after Jersey Farm area of St Albans.
- Nearby Jersey Farm Woodland Park and Heartwood Forest.
- Bright kitchen & dining room which opens to the garden.
- Stylish and modern family bathroom.
- Includes a garage for added convenience.
- Close to excellent schools, shops, and eateries.
- Spacious bay-fronted living room.
- Three well-proportioned bedrooms.
- Landscaped, enclosed rear garden.
- EPC Grade B

