



HEARTWOOD  
HOMES



# Milford Close, Marshalswick, St. Albans, AL4 9AQ

£435,000

🛏️ 2 🚿 1 🛋️ 2



This charming and well-maintained two double bedroom cluster home is tucked away in a popular cul-de-sac, close to excellent local schools, handy shops, and great transport links. You'll also find beautiful countryside walks nearby, including Jersey Farm Woodland Park and Heartwood Forest. St Albans' vibrant city centre, with its fantastic leisure facilities and more transport options, is just a short drive away.

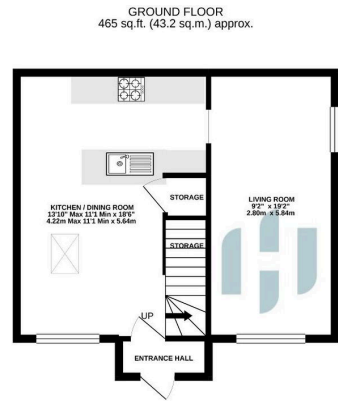
Inside, the home feels bright and spacious. The entrance porch leads into a kitchen/dining area with impressive vaulted ceilings, and the dual-aspect living room stretches full-length, featuring a curved ceiling and recessed lighting.

Upstairs, there are two generously-sized double bedrooms and a bathroom. Outside, the front garden is landscaped and offers off-street parking, along with an additional allocated parking space.

Get in touch with us today to book your viewing—you won't want to miss this fantastic home!







TOTAL FLOOR AREA - 758 sq ft. (70.4 sq.m.) approx.

Whilst every attempt has been made to ensure the accuracy of the floorplan contained here, measurements of doors, windows, rooms and any other items are approximate and no responsibility is taken for any errors, omissions or mis-statements. This plan is for illustrative purposes only and should be used on such by any prospective purchaser. The services, systems and appliances shown have not been tested and no guarantee as to their operability or efficiency can be given.  
Made with Neopage (2021)

- Charming two double bedroom cluster home in a sought-after cul-de-sac
- Vaulted ceilings in the kitchen/dining area for a stylish, open feel
- Located close to highly-rated local schools and useful shopping amenities
- Landscaped front garden with off-street parking and an additional allocated parking space
- Easy access to transport links for commuting or getting around the local area
- Bright and spacious living area with dual-aspect and unique curved ceiling.
- Well-maintained throughout, ready to move in and enjoy
- Beautiful countryside walks nearby, including Jersey Farm Woodland Park and Heath for first time buyers, small families, or downsizers looking for a peaceful setting
- EPC Grade C

