



HEARTWOOD  
HOMES



# Upper Culver Road, St. Albans, AL1 4EE

£675,000

3 1 2



This charming period home is nestled in the heart of the highly desirable Bernards Heath Conservation area. You'll love the location, with a fantastic infant school right at the end of the street, a handy corner shop/post office, and a delightful coffee shop overlooking Bernards Heath itself – all just a short stroll away. Plus, St Albans' vibrant city centre, packed with shops, pubs, restaurants, and the mainline train station, is just a quick trip from your doorstep.

The home itself is beautifully presented, offering spacious and flexible living. The bright, open-plan living room features a lovely fireplace and stylish fitted bookcases, making it the perfect spot to unwind. The large kitchen/breakfast room at the rear is ideal for entertaining, with doors that lead out to a well-maintained garden – great for those summer get-togethers.

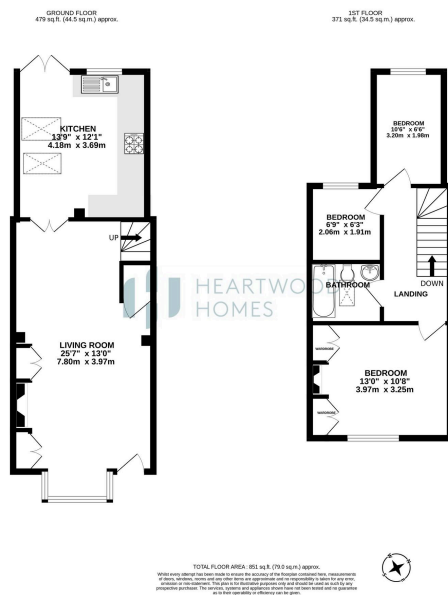
Upstairs, you'll find three generously sized bedrooms, along with a family bathroom that boasts a vaulted ceiling for added character. The master bedroom is a real highlight, with built-in wardrobes and a charming fireplace.

Outside, the front garden is neatly presented with a picket fence and gated access with a wonderful tiled pathway to the front door. The rear garden is a great size, beautifully kept, and includes a lovely patio area, perfect for soaking up the sun.

This home offers the best of St Albans city living with easy access to London. Don't miss out – book your viewing today!







- Located in the desirable Bernards Heath Conservation area.
- Short distance to St Albans city centre and the station
- Large kitchen/breakfast room ideal for entertaining.
- Master bedroom features built-in wardrobes and a charming fireplace.
- A must view
- Close to a popular infant school, corner shop, and coffee shop.
- Bright, open-plan living room with fireplace and fitted bookcases.
- Three spacious bedrooms and a family bathroom with vaulted ceiling.
- Well-maintained rear garden with a patio area perfect for summer.
- EPC Grade Awaited

