



HEARTWOOD
HOMES

Harvest Court Harvesters, St. Albans, AL4 9QY

£300,000

🛏️ 2 🚿 1 🪑 1



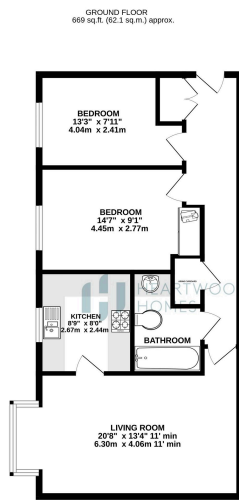
Check out this lovely, chain-free ground floor apartment for over 60's, located in the friendly Jersey Farm area of St Albans. It's just a short stroll to a variety of shops, eateries, and coffee shops in both Jersey Farm and the Quadrant shopping precincts. Plus, you'll find a welcoming community at Harvest Court, with a property manager on site and beautiful countryside walks nearby. In the Jersey Farm shopping precinct there is a useful community hall, a doctors, dentist, a pharmacy and a direct bus link to St Albans City Centre

This bright and spacious apartment has just been fully redecorated, with new carpets fitted and features an entrance hall leading to a roomy bay fronted living area and a well-fitted kitchen. There are also two good-sized bedrooms and a modern bathroom.

Outside, you'll find parking available for residents and visitors, along with a charming communal garden to relax in.

Give us a call today to view this delightful apartment and see all it has to offer!





TOTAL FLOOR AREA: 669 sq.ft. (62.1 sq.m.) approx.
Where any element has been taken into account the accuracy of the drawings is not guaranteed. Measurements are given in feet and inches. All dimensions are approximate and are subject to change without notice. The actual, written and verbal information given by the sales agent is not intended to be a guarantee of the accuracy of the drawings.

- Lovely, chain-free ground floor apartment for over 60's
- Welcoming community at Harvest Court
- Bright and spacious living area with a well-fitted kitchen
- A charming communal garden
- Residents laundry room
- Short walk to shops, eateries, and coffee shops in Jersey Farm and the Quadrant
- Close to beautiful countryside walks
- Resident and visitor parking
- EPC Grade C

