



HEARTWOOD
HOMES

Hughenden Road, St. Albans, AL4 9QN

£400,000

🛏️ 2 🚿 1 🚻 1



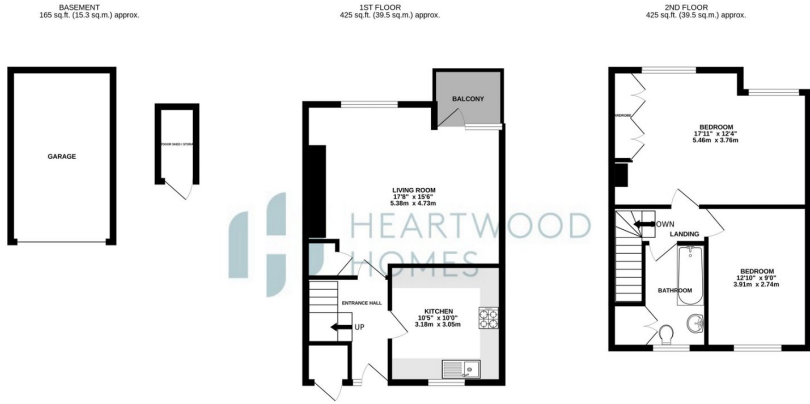
Welcome to this spacious two double bedroom, top-floor maisonette with a sunny balcony. Located in the sought-after Marshalswick area of St Albans, this property is perfect for families. It's close to top-rated schools and a variety of local shops, including M&S and Sainsbury's. Enjoy a great selection of eateries and bars nearby, and the historic St Albans City Centre and mainline station are just a short distance away.

This delightful duplex maisonette comes with a share of the freehold and offers bright and spacious living areas. The entrance hallway leads to a generously sized contemporary kitchen breakfast room. The superb living room at the rear features a balcony with charming rooftop views.

Upstairs, you'll find two large double bedrooms and a modern bathroom. Outside, enjoy well-maintained communal grounds and the convenience of a garage en bloc.

This maisonette is sure to be popular, so book your viewing soon to avoid missing out!





HEARTWOOD HOMES

TOTAL FLOOR AREA: 1015 sq ft. (94.3 sq.m.) approx.

While every attempt has been made to ensure the accuracy of the floorplan contained here, measurements of floors, sections, rooms and any other items are approximate and no responsibility is taken for any errors, omissions or misstatements. This plan is for illustrative purposes only and should be relied on solely by any prospective purchaser. The services, systems and appliances shown have not been tested and no guarantee as to their operability or efficiency can be given.
Made with Metrepro 0.0204

