



HEARTWOOD  
HOMES



# Harpenden Rise, Harpenden, AL5 3BG

Offers Over £625,000

3 1 1



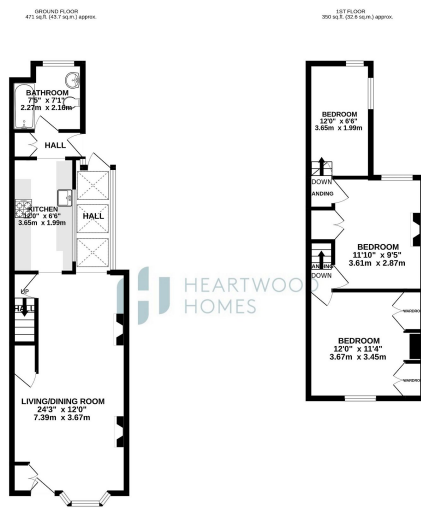


A beautifully presented extended period family home situated in a sought-after location close to Roundwood School. The property features a generous bay-fronted lounge, a modern kitchen with a glass roof breakfast room, a dining area, and a ground floor modern bathroom.

On the first floor, there are two double bedrooms and a generous single bedroom, providing ample accommodation for a family.

Outside, the home boasts a large rear garden mainly laid to lawn, complimented by a paved patio area that is ideal for entertaining in the warmer summer months.





HEARTWOOD HOMES

TOTAL FLOOR AREA: 767 sq ft (70.3 sq m) approx.  
While every effort has been made to ensure the accuracy of the floorplan, the measurements of which are not intended to be used for legal purposes. The measurements are for information only and are not intended to be used for legal purposes. The measurements are for information only and are not intended to be used for legal purposes. The measurements are for information only and are not intended to be used for legal purposes.

- Period property
- Contemporary glass roof breakfast area
- EPC D
- Feature fireplaces
- Stunning open plan living room / dining room / kitchen
- Close to sought after schools
- Potential to extend STPP
- Period features

