



HEARTWOOD
HOMES

Lower Dagnall Street, St. Albans, Hertfordshire, AL3 4PE

Offers Over £625,000

🛏️ 2 🚿 1 🚗 2



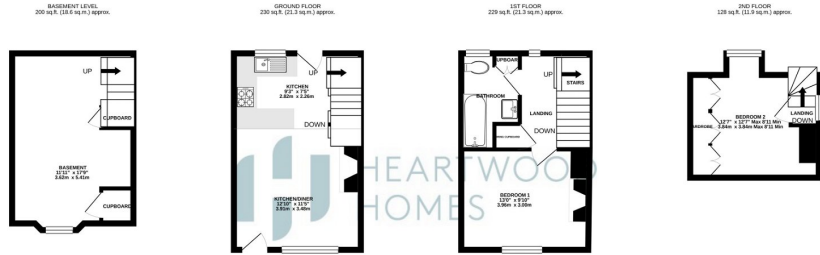
A charming Grade II listed cottage set in the heart of St Albans sought after conservation area, only a short stroll to the Cathedral and St Albans City Centre with its wide selection of shops restaurants and pubs. The mainline railway station is only a short distance away offering great access to London via St Pancras International.

This versatile home offers ample accommodation set over four floors with some beautiful period features and exposed beams. You enter into the characterful living/dining room, which is open plan to a lovely kitchen. On the lower ground floor there is a stunning basement which must be seen to be appreciated.

To the first floor there is a stunning master bedroom with exposed beams with a brick feature fire place and bathroom. On the top floor there is a well-proportioned second bedroom.

Externally you have a beautifully landscaped, enclosed rear walled garden. Call us today to arrange a viewing of this rarely available home.





TOTAL FLOOR AREA: 787 sq ft. (73.1 sq.m) approx.
 Whilst every attempt has been made to ensure the accuracy of the floorplan contained here, measurements of doors, windows, corners and other items are approximate and no responsibility is taken for any error, omission or misstatement. The floor plan is illustrative only and should be used as a guide only for prospective purchase. The services, systems and appliances shown have not been tested and no guarantee as to their operability or efficiency can be given.
 Made with Metropix 0.2020

- Close to the City Centre
- Open plan kitchen/living room
- Lounge diner
- Attractive garden with a sunny aspect
- Versatile accommodation
- Utility room
- Grade II Listed
- Stunning Garden
- Open Plan Living
- Basement

