



HEARTWOOD
HOMES

Lyndon Mead, Sandridge, St. Albans, AL4 9EX

£950,000

🛏️ 4 🚿 2 🚪 3



Embrace modern family living in this contemporary four-bedroom home tucked away in a peaceful cul-de-sac. Located in Sandridge village with attractive views to the side.

The property is perfectly located in the delightful village of Sandridge close to a sought after schooling, As well as three pubs, The Green Man, The Rose & Crown and The Queen's Head, Sandridge has also a popular convenience store. The amenities of St Albans remain close at hand, whilst the property enjoys a setting close to open countryside including the beautiful open spaces of Heartwood Forest.

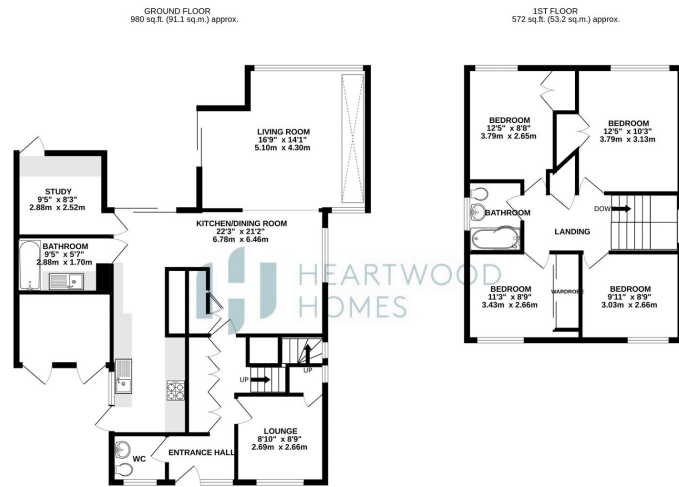
Starting in the generous entrance hallway with a W.C to the left ample storage and a cosy lounge to the right .

Boasting large living accommodation including open plan living, featuring a beautiful kitchen/dining/family room with a full width window overlooking the attractive garden and allowing the light to flood in. Furthermore there is a ground floor bathroom and a useful study.

To the first floor there are four generous well proportioned bedrooms and a family bathroom.

Externally to the front there is off street parking and a useful store and to the rear is a beautifully maintained and enclosed rear garden with a good size patio, perfect for entertaining.





TOTAL FLOOR AREA: 1553 sq.ft. (144.2 sq.m.) approx.
 While every effort has been made to ensure the accuracy of the description contained herein, measurements of doors, windows, stairs and any other items are approximate and no responsibility is taken for any error, omission or mis-statement. This plan is for guidance purposes only and should not be used to assist in any prospective purchase. The seller is not responsible for any errors or omissions and no guarantee is given as to their accuracy or efficiency can be given.
 Made with HomeByDesign



- Contemporary four-bedroom home in peaceful cul-de-sac
- Easy access to St Albans amenities and countryside
- Study and a ground floor bathroom
- Four generous bedrooms upstairs, plus family bathroom
- Close to sought-after schooling and three charming pubs
- Large open-plan living area with beautiful kitchen/dining/family room
- Spacious entrance hallway with ample storage and a W.C
- EPC Grade D

