



HEARTWOOD
HOMES

Wheat Close, Sandridge, St. Albans, AL4 9NN

£675,000

3 3 1



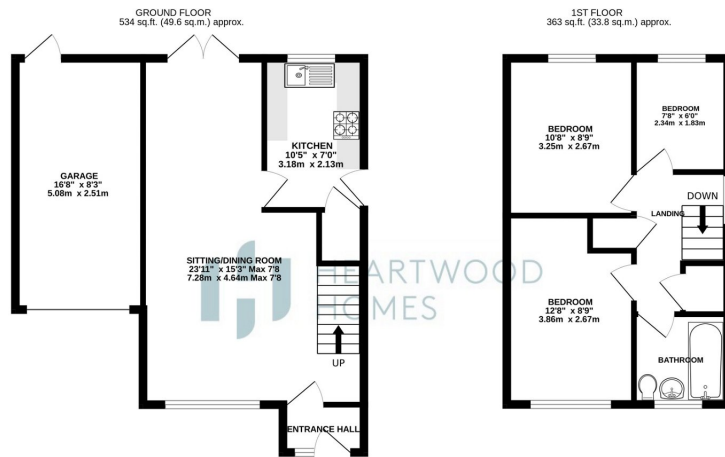
Welcome to this fantastic family home! Situated in a peaceful cul-de-sac near the scenic Jersey Farm Woodland Park, this three-bedroom gem is perfect for those seeking a serene lifestyle. Plus, it's in the prime spot for top-notch schooling!

Step inside to find a welcoming entrance hallway leading to a spacious open-plan living and dining area, ideal for cozy gatherings or quiet nights in. The kitchen is roomy and ready for your culinary adventures. Upstairs, discover three well-sized bedrooms and a family bathroom.

Outside, you'll love the neatly kept front garden and the lush, enclosed rear garden – perfect for outdoor fun or relaxing weekends. And don't forget the attached garage with convenient off-street parking!

Don't miss out – give us a call today to schedule your viewing. Trust us, you won't want to let this opportunity slip away! EPC Grade E.





TOTAL FLOOR AREA: 897 sq ft. (83.4 sq.m.) approx.
 While every attempt has been made to ensure the accuracy of the floorplan concerned here, measurements of doors, windows, rooms and any other items are approximate and no responsibility is taken for any error, omission or mis-statement. This plan is for illustrative purposes only and should be used as such by any prospective purchaser. The furniture, fixtures and appliances shown have not been tested and no guarantee as to their quantity or efficiency can be given.
 Made with Metagon 1/2024

- Wonderful chain-free detached family home
- Priority area for highly sought-after schooling
- Roomy kitchen ready for your culinary adventures
- Garage and parking
- Peaceful cul-de-sac location near Jersey Farm Woodland Park
- Spacious open-plan living and dining area
- Neatly kept front garden, enclosed rear garden
- EPC Grade E

