



HEARTWOOD
HOMES

Riverside Road, St. Albans, AL1 1SE

Offers Over £325,000

2 1 1



A bright and spacious two double bedroom apartment which is set in the popular Riverside Road with attractive views over the River Ver and the allotments. The property is perfectly located only a short walk from St Albans City Centre with its fantastic variety of shops and eateries as well as the mainline station with direct access to London via St Pancras international, the fast train takes approximately 18 minutes.

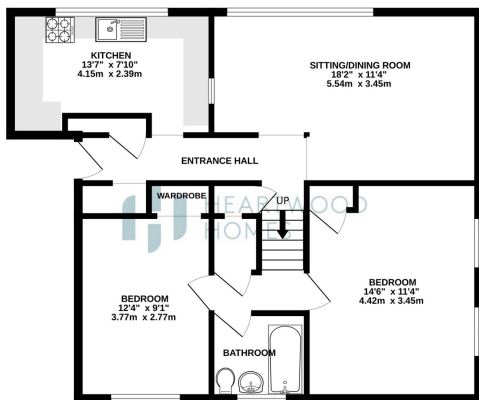
You enter via the communal entrance into a good size hallway with ample built in storage. To the left is a modern fitted kitchen breakfast room and at the end is a fantastic size living room with panoramic tree top views. To the front of the building you have two generous double bedrooms and a fitted bathroom.

Externally to the the front there is residents parking, a storage shed and to the rear you have communal gardens leading down to the River.

Please call us today to arrange your appointment to view this great apartment. EPC Grade C.



GROUND FLOOR
749 sq.ft. (69.6 sq.m.) approx.



TOTAL FLOOR AREA: 749 sq ft (69.6 sq.m.) approx.
MEASUREMENTS: All measurements are taken to the internal face of the finished plasterwork. Measurements of areas within rooms are given and overall dimensions are given horizontally and vertically. All measurements are given in feet and inches. Measurements are given to the nearest millimetre. The floor area and overall dimensions are given to the nearest millimetre. The floor area and overall dimensions are given to the nearest millimetre. The floor area and overall dimensions are given to the nearest millimetre.

- Attractive views
- 18'2 Living room
- Residents parking
- A must view
- Close to the City Centre and the station
- Modern kitchen breakfast room
- Two double bedrooms
- EPC Grade C

