



Apartment 70 The Brick, London W9

£595,000

Stacker parking

£50,000



This stunning, beautifully designed studio/One bedroom apartment, set within The Brick – a brand new landmark development in Westbourne park – This apartment sets a new benchmark for city living, designed by award winning architect Stiff and Trevillion, complimented by a beautiful interior design by Sarah Bridgeman at PPG Interiors. It's important to note that whilst the apartment is technically a studio, it does benefit from having a completely separate sleeping area.

This beautiful home benefits from 3m high ceilings, an abundance of natural light.

The apartment benefits from a large private balcony and access to a communal roof garden. Set within the Woodfield road redevelopment area, 5-minute walk to the tube, a 12-minute walk to Portobello road and excellent access to Paddington provides excellent transport links and a thriving and exciting neighbourhood in which to live.

The Brick's striking exterior was designed with reference to 20th century architect, Edwin Lutyens. A pioneer of the Arts and Crafts movement, Lutyens was famed for his brickwork and stone masonry, use of local materials and simple yet solid structural form. His architectural vernacular is evidenced in the premium Petersen Tegl mixed-brick façade, interspersed with clean-line balconies and glazing.









The furnishings and parking are available by separate negotiations.

This well priced apartment benefits from a huge specification including comfort cooling, bespoke kitchen including Miele appliances.

Viewing is highly recommended, and the apartment is ready to move into.

The development itself offers excellent levels of security and sustainability credentials.

Residents can also make use of two communal gardens; verdant, landscaped spaces that belie The Brick's thoroughly urban location. Inspired by celebrated horticulturalist Gertrude Jekyll and her partnership with Edwin Lutyens, the sprawling roof terrace showcases perennials and planters contained in red brick parapets. It's one of London's largest private roof terraces – tailor- made to capitalise on London's warmer months.





THE BRICK

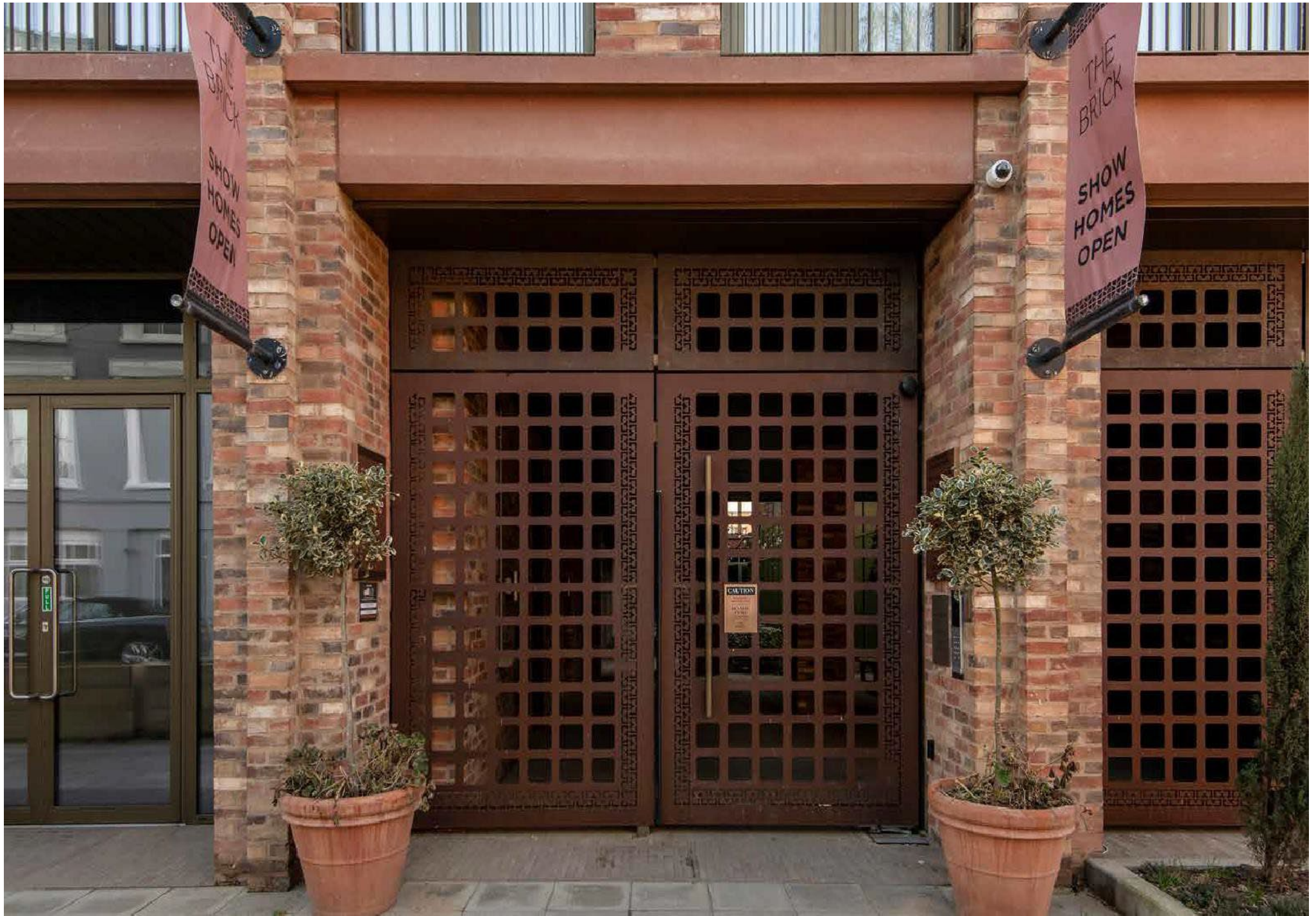
Sky Loft Apartments 61, 64, 67 & 70
(floors 8, 9, 10 & 11)

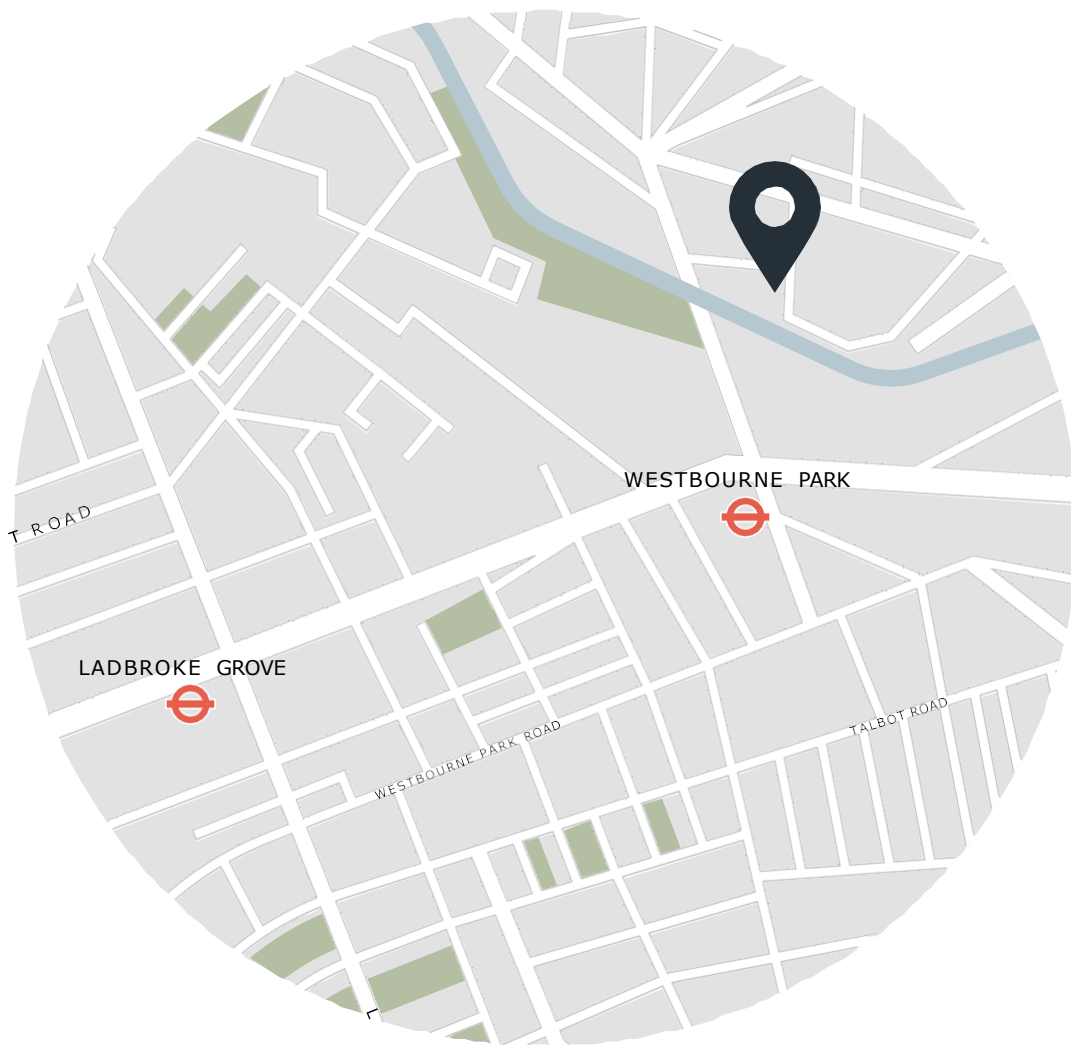
Studio



Dimensions	45 M ²	494 SQ ^{FT}
LIVING/DINING/KITCHEN	8.08m x 3.42m	26'6 x 11'2
BEDROOM	2.70m x 2.51m	8'10 x 8'2







Location

Caught between Notting Hill, Maida Hill and North Kensington, The Brick is located in one of London's most eclectic and sought-after spots. There's a community feel to Golborne Road, where locals flock to Lisboa and Layla Bakery for freshly-baked goods. Retail therapy comes in the form of Portobello Road's vintage boutiques, or Westfield Shopping Centre's world-class retailers. Stroll down Little Venice, the tranquil towpath lined with colourful barges and handsome Georgian townhouses. Stop by the Theatre Café before seeing a show at Regent's Park Open Air Theatre, a fixture in the capital's summertime calendar. Or for something closer to home, it's a short walk to local landmark The Electric Cinema – followed by dinner at Laylow.

Please note photographs are of an identical apartment