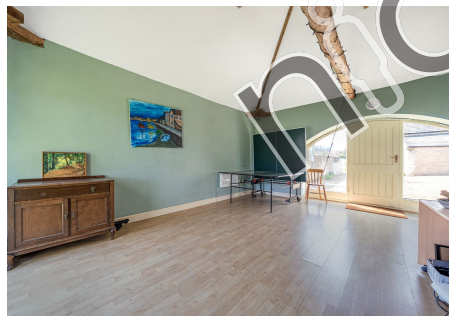
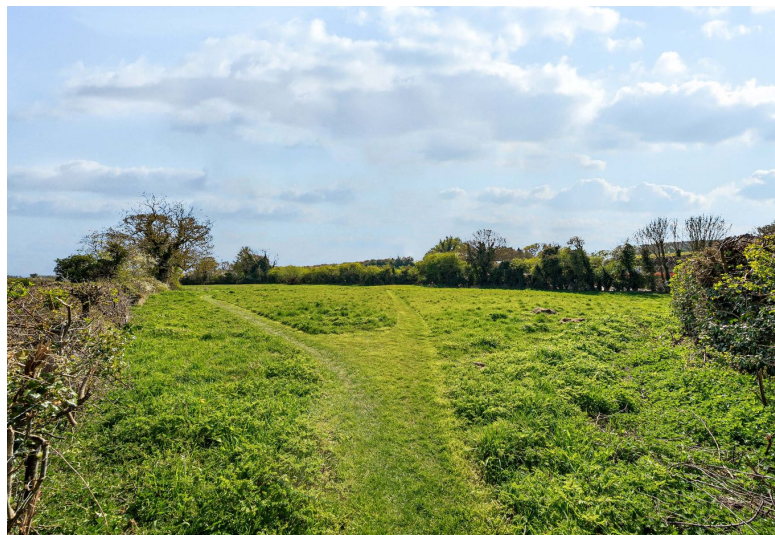




SYCAMORE HOUSE AISBY

nichecom
DRAFT COPY FOR PROOFING PURPOSES ONLY





Nestled in the tranquil conservation village of Aisby, this exceptional stone-built residence offers a rare blend of character, space, and lifestyle flexibility. Set on a generous plot with picturesque countryside views, the main house, outbuildings, and landscaped gardens create the perfect setting for multigenerational living, working from home, or holiday accommodation.

The Ground Floor of the main house features a large, welcoming kitchen fitted with painted timber cabinetry, a tiled floor, and a classic Rayburn cooker set within an exposed brick fireplace—perfectly suited for both everyday family life and entertaining. Off the central hallway is a formal dining room and an expansive living room. There is also a utility room and a downstairs WC, as well as a separate study ideal for home working. A door from the living area leads to a charming stone-built outhouse offering further practical storage space or potential for development.

Upstairs, the property boasts four double bedrooms arranged across two wings, providing both privacy and flexibility. The principal bedroom includes an ensuite, as does the bedroom located in a separate wing, while the remaining bedrooms are served by a well-appointed family bathroom.

The Outbuildings, arranged around a central gravelled courtyard, add substantial extra space to the property. These include a detached annex with its own fitted kitchen, a large playroom, a bathroom, a double bedroom, and a separate office—an ideal setup for multigenerational living, a home business, or even holiday let potential. There is also a wood store and a spacious carport.

Outside, the home is set within attractive gardens backing onto open fields creating a private and idyllic setting. In addition to the gardens, the property includes two paddocks, bringing the total acreage to just over 3 acres. A gated driveway provides ample parking and ensures privacy.



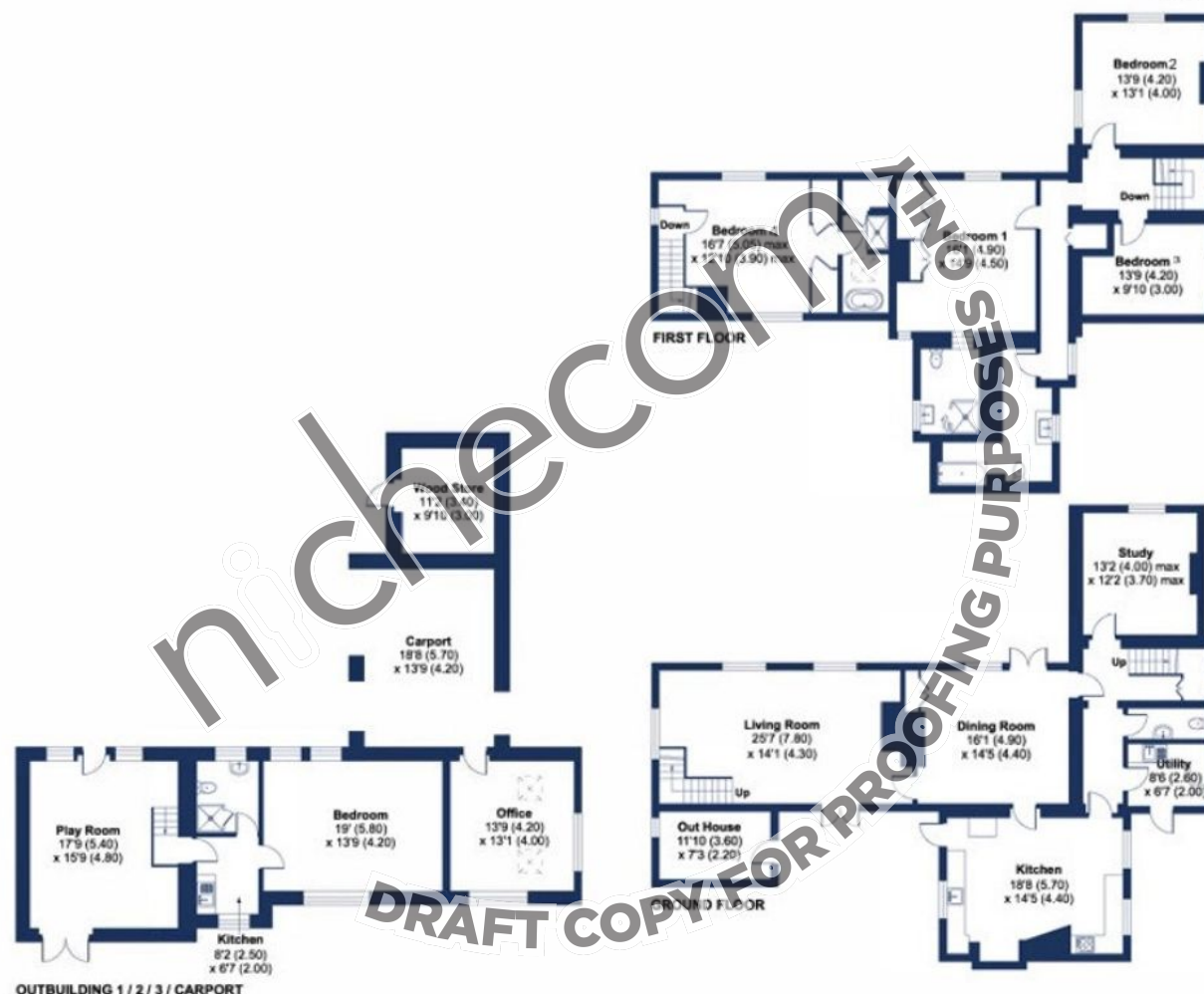
Aisby, Grantham, NG

Approximate Area = 2608 sq ft / 242.2 sq m (excludes carport)

Outbuildings = 1074 sq ft / 99.7 sq m

Total = 3682 sq ft / 341.9 sq m

For identification only - Not to scale



OUTBUILDING 1 / 2 / 3 / CARPORT

Moore V Ltd trading as Moores Estate Agents gives notice that: 1. These particulars do not constitute an offer or contract or part thereof. 2. All descriptions, photographs and plans are for guidance only and should not be relied upon as statements or representations of fact. All measurements are approximate and not necessarily to scale. Any prospective purchaser must satisfy themselves of the correctness of the information within the particulars by inspection or otherwise. 3. Moore V Ltd trading as Moores Estate Agents does not have any authority to give any representations or warranties whatsoever in relation to this property (including but not limited to planning/building regulations), nor can it enter into any contract on behalf of the Vendor. 4. Moore V Ltd trading as Moores Estate Agents does not accept responsibility for any expenses incurred by prospective purchasers in inspecting properties which have been sold, let or withdrawn. 5. If there is anything of particular importance to you, please contact this office and we will try to have the information checked for you.



Moores Property Hub 01572 757979
Moores Move to the Country 020 301 11361
Melton 01664 491610
Uppingham 01572 821935

Stamford 01780 484555
Grantham Meet & Greet 01476 855618
Peterborough Meet & Greet 01733 788888
A1 Meet & Greet Stoke Rochford



office@mooresestateagents.com
www.countryequestrianhomes.com