

The Alder 4-bedroom home



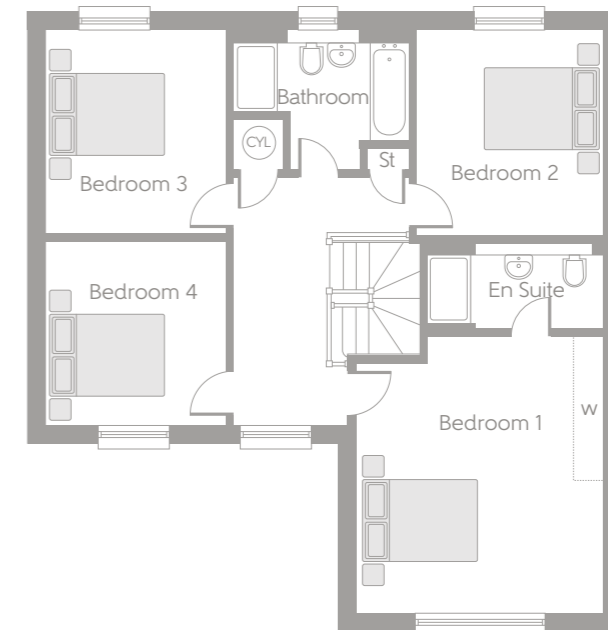
Ground floor comprises

Kitchen, utility, dining room, family room, living room, garage, cloakroom and store.

First floor comprises

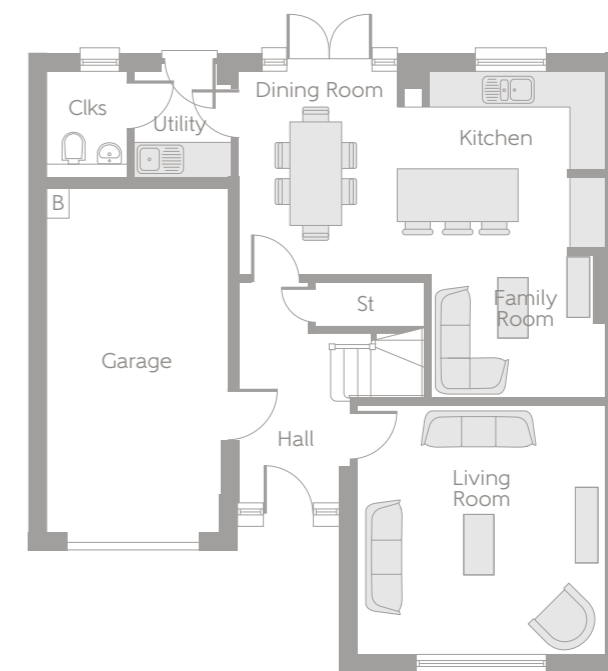
Master Bedroom with en suite, 3 further bedrooms and bathroom.

First Floor



Bedroom 1	4.811m x 4.290m	15'10" x 14'1"
Bedroom 2	3.582m x 3.278m	11'9" x 10'9"
Bedroom 3	3.598m x 3.177m	11'10" x 10'5"
Bedroom 4	3.189m x 3.177m	10'6" x 10'5"

Ground Floor



Kitchen/ Dining Room	6.366m x 3.520m (max)	20'11" x 11'7" (max)
Family Room	3.001m x 2.508m (max)	9'10" x 8'3" (max)
Living Room	4.320m x 4.290m	14'2" x 14'1"

B Boiler
 CYL Hot Water Cylinder
 Clks Cloakroom
 St Store
 w Wardrobe

Some items shown in this key may be subject to change, and positions could vary from those indicated on this floorplan. Please refer to Sales Advisor for details of your selected plot. Computer generated image shown overleaf. External finishes, landscaping and configuration may vary from plot to plot. Please refer to Sales Advisor for further details. All dimensions are approximate and should not be used for carpet sizes, appliance spaces, or furniture. Furniture not to scale and all positions are indicative. We operate a policy of continuous improvement and individual features such as kitchen and bathroom layouts, doors, windows, garages and elevational treatments may vary from time to time. Consequently these particulars should be treated as general guidance only and do not constitute a contract, part of a contract or a warranty.