



Manor Lane, Shipston-On-Stour, CV36 4EF

**SHELDON
BOSLEY
KNIGHT**

LAND AND
PROPERTY
PROFESSIONALS

Property Description

A spacious four-bedroom detached home located just a stone's throw from the town centre, schools, and amenities.

Upon entering the house through a convenient porch, you are greeted by a sitting room featuring a wood-burning stove and a large bay window that allows plenty of natural light in. Off the sitting room is a fourth bedroom, currently used as a playroom.

The kitchen/dining room spans the width of the house and offers fantastic storage, along with French doors that lead to the garden. There is also a utility room and a downstairs shower room with a WC. The study can be found off the utility room.

Upstairs, there are two double bedrooms, one single bedroom, and a family bathroom.

At the rear, you will find a low-maintenance, private garden with a patio area. The garden also features a generous garden room or home office that has power and lighting, plus side access to the front. The front of the property includes spacious off-road parking for several vehicles and access to a converted garage used for storage.

This home offers ample and versatile living space downstairs, a private garden, plentiful parking, and easy access to all of Shipston's amenities.





Key Features

- Versatile Living Space with Potential for 5 Bedrooms
- Stones Throw to the Town Centre and Schools
- Sitting Room with Wood Burning Stove
- Recently Redecorated
- Private Landscaped, Low Maintenance Garden
- Garden Summer House/ Home Office
- Driveway Parking for 3/4 Cars
- Large Kitchen Dining Room
- Nursery, Primary & Secondary Schools in the Town
- 10 Minutes Drive to Mainline Rail to Oxford/London

Price Guide
£460,000

Shipston on Stour

The market town of Shipston on Stour, located in South Warwickshire, is an excellent choice for those who want to have easy access to a variety of amenities. The town has a rich history as an important sheep market town and is also known as 'Sheep-wash-Town'. It has flourished over the years as a thriving working town and boasts a range of facilities, including a number of independent shops, pubs, restaurants, and community-led services. The town has a primary and a secondary school, a medical centre, two dentists, a town hall, a scout hut, and many other amenities, including a variety of sports clubs. The town also hosts several events throughout the year, such as the Shipston Wool Fair, craft markets, Shipston Proms, and Victorian Evening. The main centres for the area are Stratford upon Avon (11 miles), Banbury (14 miles), Warwick (17 miles), and Leamington Spa (18 miles). A mainline rail service to Oxford/London is available from the Cotswold town of Moreton in Marsh (7 miles).

Additional Information

Tenure: We understand that the property is for sale Freehold.

Local Authority: Stratford-On-Avon District Council

Council Tax Band: D

EPC Rating: D

Mains water, drainage, gas and electric are connected to the property.

Interested parties are advised to make their own enquiries and investigations before finalising their offer to purchase.

Agents Notes

(i) All descriptions, dimensions, reference to condition and necessary permissions for use and occupation, and other details are given without responsibility and any intending buyers should not rely on them as statements of fact, but must satisfy themselves by inspection or otherwise as to the correctness of each of them.

(ii) Floorplans shown are for general guidance only. Whilst every attempt has been made to ensure that the floorplan measurements are as accurate as possible, they are for illustrative purposes only.

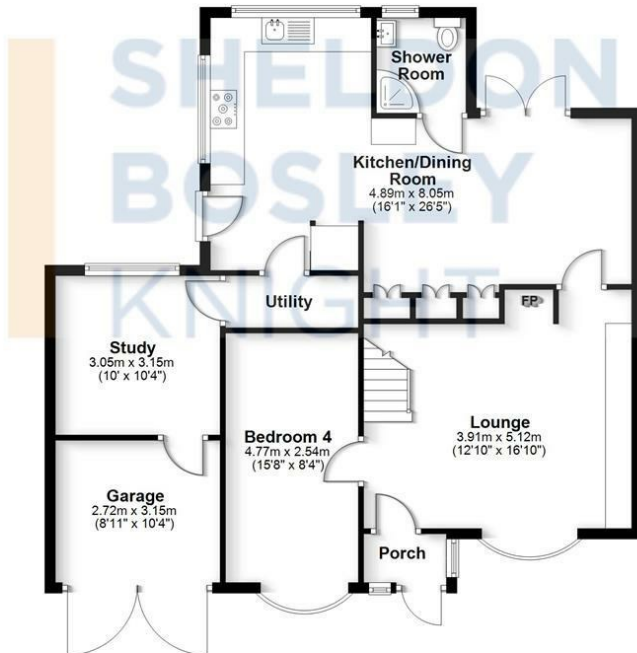
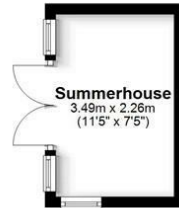






Floorplan

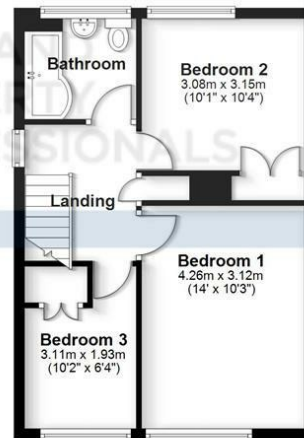
Ground Floor
Approx. 102.9 sq. metres (1108.1 sq. feet)



Total area: approx. 144.4 sq. metres (1554.7 sq. feet)

All efforts have been made to ensure the measurements are accurate on this floor plan, however these are for guidance purposes only.
Plan produced using PlanUp.

First Floor
Approx. 41.5 sq. metres (446.6 sq. feet)



EPC Rating - D

Tenure - Freehold

Council Tax Band - D

Local Authority
Stratford-On-Avon District Council

We routinely refer clients to both our recommended Legal Firm and a panel of Financial Services Providers. It is your decision whether you choose to deal with these companies. In making that decision, you should know that we receive a referral fee

Our Testimonials

Excellent sales team. Chloe, Christian and Leanne supported me throughout a difficult sale and at a very competitive fee. They really know their stuff and I wouldn't hesitate to recommend SBK Evesham. Thank you!

Louise Orchard

Fantastic and easy experience. Nothing was too much to ask and the team were incredible in providing support and reassurance in our first move. Everything was communicated to us professionally and efficiently. Massive thanks to the team for making this move possible.

Anna Stoumann

We found our dream home and needed to sell our house to make an offer. Andrew and the team at Sheldon Bosley knight Leamington were fantastic. They managed to value our home, got photos and floor plans sorted, advertised, completed viewings and we had an above asking price offer accepted in one and a half weeks from first contacting them!! Communication from both Andrew, Sophie and the team plus through their online portal was great throughout. Honestly couldn't have asked for more.

Charlie Foley

Both Amy and Amelia were incredibly helpful and proactive throughout the purchase of our property. The commitment that they both showed to the sellers and us as buyers was second to none and meant that any moving bumps were successfully managed. We would wholeheartedly recommend them to friends and, if we were to consider moving again, would certainly use them.

Emmah Ferguson

I had a great experience while purchasing a house with Sheldon Bosley Shipston on stour. From start to finish they have done everything they can to help and been great with communication. I dealt with Kate and Morgan who were both lovely but I'm sure it was a team effort behind the scenes. I felt like they were there for me and supportive. Thank you to you all!

Georgie Smith

Very helpful and friendly staff. They were happy to provide names of local tradesmen which will be a great help. Would highly recommend.

Jane Harms

A stress free procedure due mainly to the estate agent Rockwell Allen. There was excellent communication and marketing with the bonus of getting the asking price.

Susan

Millie has been absolutely brilliant from the word go. The whole experience has been a breath of fresh air and the complete opposite from our last dealings with an estate agent. Thank you Millie for all your hard work and advice, couldn't be bettered.

Kate

We couldn't recommend Sheldon Bosley Knight more. After having a house sale fall through previously, we were very nervous about making our offer, but the lovely Annette and Sara guided us through everything with ease and made us feel so comfortable with our decisions. We got the house of our dreams, and we are absolutely delighted! They made us feel like friends and we would recommend them to anyone looking to buy their perfect home.

Jen Singleton

To book a free no obligation market appraisal of your property contact your local office.

sheldonbosleyknight.co.uk



SALES

LETTINGS

PLANNING &
ARCHITECTURE

COMMERCIAL

STRATEGIC
LAND

NEW
HOMES

BLOCK
MANAGEMENT

RURAL



DISCLAIMER

All fixtures and fittings mentioned in these particulars are included in the sale, all others in the property are specifically excluded. Photographs are reproduced for general information and it must not be inferred that any item is included for sale with the property. These particulars are thought to be materially correct. Their accuracy is not guaranteed and they do not form part of any contract.