



, Banbury, OX15 5EH

**SHELDON  
BOSLEY  
KNIGHT**

LAND AND  
PROPERTY  
PROFESSIONALS



# Property Description

This charming one-bedroom stone cottage is located in a popular village community and features a lovely garden as well as parking availability.

Access to the cottage is via the garden steps that lead to the entrance. Once inside, you'll find a bespoke oak-fitted kitchen equipped with a Belfast sink, fridge, and washing machine, along with space for a small two-seater table. The kitchen flows into the sitting room, which boasts an open fireplace and a large storage cupboard.

Upstairs, there is a double bedroom that offers rooftop views with fields beyond. This floor also includes an airing cupboard and a bathroom.

The garden features a spacious patio area perfect for enjoying the sun, along with tiered borders filled with flowers and shrubs. Additionally, there is a communal parking area where you can park one car.





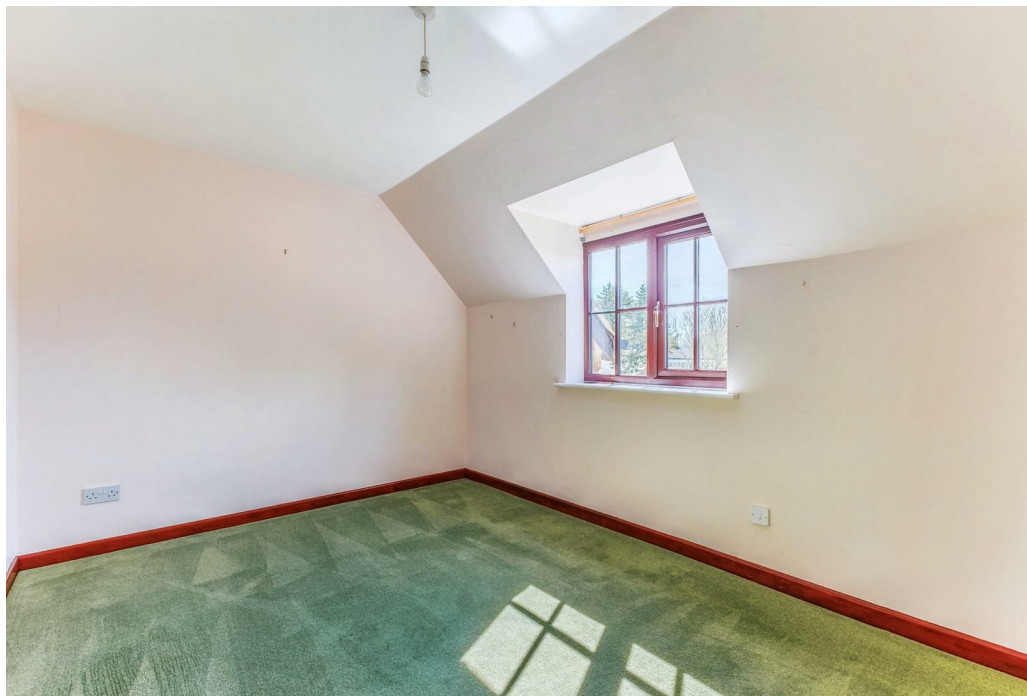


## Key Features

- Characterful Stone Cottage
- Bespoke Oak-Fitted Kitchen
- Sitting Room with Open Fireplace
- One Double Bedroom
- Pretty Rear Garden
- Thriving Village Community
- Communal Parking Area
- No Onward Chain

**Price Guide**  
**£240,000**

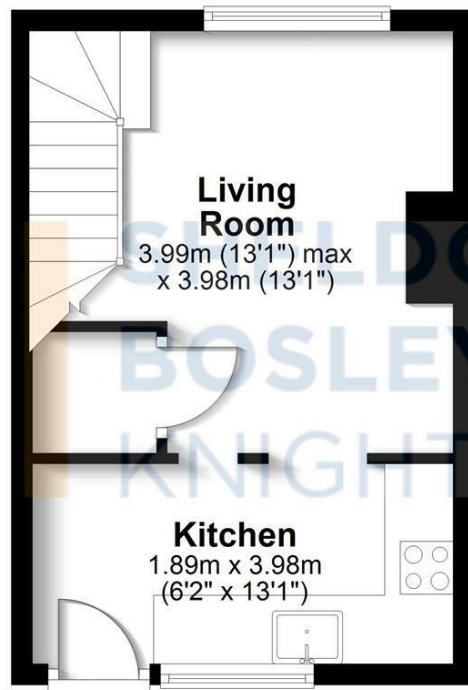






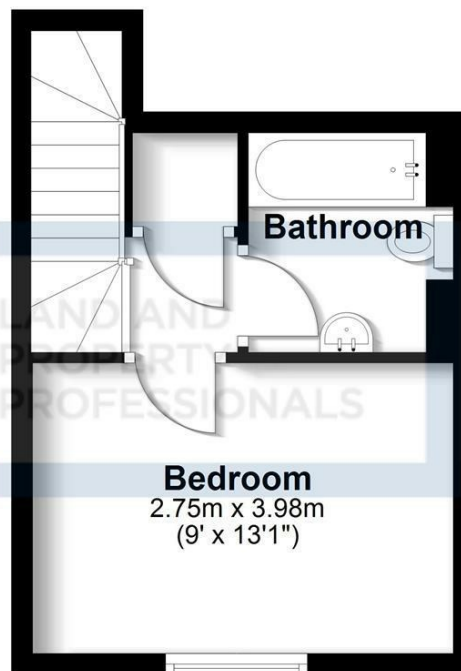
## Ground Floor

Approx. 23.8 sq. metres (256.4 sq. feet)



## First Floor

Approx. 20.4 sq. metres (219.7 sq. feet)



**Total area: approx. 44.2 sq. metres (476.1 sq. feet)**

All efforts have been made to ensure the measurements are accurate on this floor plan, however these are for guidance purposes only.  
Plan produced using PlanUp.



EPC Rating - E

Tenure - Freehold

Council Tax Band - C

Local Authority  
Cherwell District Council





We routinely refer clients to both our recommended legal firm and a panel of financial services providers. It is your decision whether you choose to deal with these companies. In making that decision, you should know that we receive a referral fee.

**SHELDON  
BOSLEY  
KNIGHT**

LAND AND  
PROPERTY  
PROFESSIONALS