



Felton Close, Shipston-On-Stour, CV36 4FT

**SHELDON  
BOSLEY  
KNIGHT**

LAND AND  
PROPERTY  
PROFESSIONALS



# Property Description

This is a beautiful 4-bedroom detached house built by Cala Homes in 2019. The house is situated on the edge of a select development, offering views of the adjacent countryside.

As you enter the house, you will find a spacious entrance hall with good storage facilities, including an under-stair cupboard, an additional cupboard for coats and shoes, and a WC. To the left there is a sitting room with two windows, one of which is a large bay window that lets in plenty of natural light, there is also a fitted media/storage unit at one end. On the right of the hall, there is a spacious kitchen/dining/family room with large patio doors that open to the garden. The kitchen has many fitted units, including a Bosch fridge freezer, dishwasher, a double electric oven, and a 5-ring gas hob. There is also a separate utility room with space for a washing machine and dryer.

Upstairs, there are 4 double bedrooms, some of which enjoy countryside views. The main bedroom has an ensuite with a large shower, heated towel rail, and ample fitted wardrobes. The second bedroom also has fitted wardrobes. The family bathroom has a heated towel rail and a shower over the bath. On the landing, there is an airing cupboard and a separate storage cupboard.

The pretty walled garden outside has two patio areas perfect for alfresco dining and a well-kept lawn surrounded by planted borders. There is access to the side of the house, and behind the fence alongside the garden, there is a single garage with power and light. In front of the garage, there is a long driveway that can accommodate 3 cars in tandem.

The property is heated via gas central heating and has double-glazed windows. It also comes with the benefit of the remaining NHBC warranty.







## Key Features

- Immaculately presented
- Edge of estate with views
- 4 double bedrooms
- Garage and driveway for 3 cars
- Pretty walled garden
- 2 Bathrooms & WC
- 10 mins drive to mainline Oxford/London Rail
- Footpaths enabling you to walk into the town centre
- Nursery, primary & secondary schools within the town
- Countryside walks from the front door

**Offers Over  
£500,000**



### Shipston on Stour

The market town of Shipston on Stour, located in South Warwickshire, is an excellent choice for those who want to have easy access to a variety of amenities. The town has a rich history as an important sheep market town and is also known as 'Sheep-wash-Town'. It has flourished over the years as a thriving working town and boasts a range of facilities, including a number of independent shops, pubs, restaurants, and community-led services. The town has a primary and a secondary school, a medical centre, two dentists, a town hall, a scout hut, and many other amenities, including a variety of sports clubs. The town also hosts several events throughout the year, such as the Shipston Wool Fair, craft markets, Shipston Proms, and Victorian Evening. The main centres for the area are Stratford upon Avon (11 miles), Banbury (14 miles), Warwick (17 miles), and Leamington Spa (18 miles). A mainline rail service to Oxford/London is available from the Cotswold town of Moreton in Marsh (7 miles).

### Additional Information

Tenure: We understand that the property is for sale Freehold.

There is an estate service charge from the upkeep of communal areas - current charge for 2024 is £354.29. per annum.

Local Authority: Stratford-On-Avon District Council

Council Tax Band: F

EPC Rating: B

Mains water, drainage, gas and electric are connected to the property.

Interested parties are advised to make their own enquiries and investigations before finalising their offer to purchase.

### Agents Notes

(i) All descriptions, dimensions, reference to condition and necessary permissions for use and occupation, and other details are given without responsibility and any intending buyers should not rely on them as statements of fact, but must satisfy themselves by inspection or otherwise as to the correctness of each of them.

(ii) Floorplans shown are for general guidance only. Whilst every attempt has been made to ensure that the floorplan measurements are as accurate as possible, they are for illustrative purposes only.



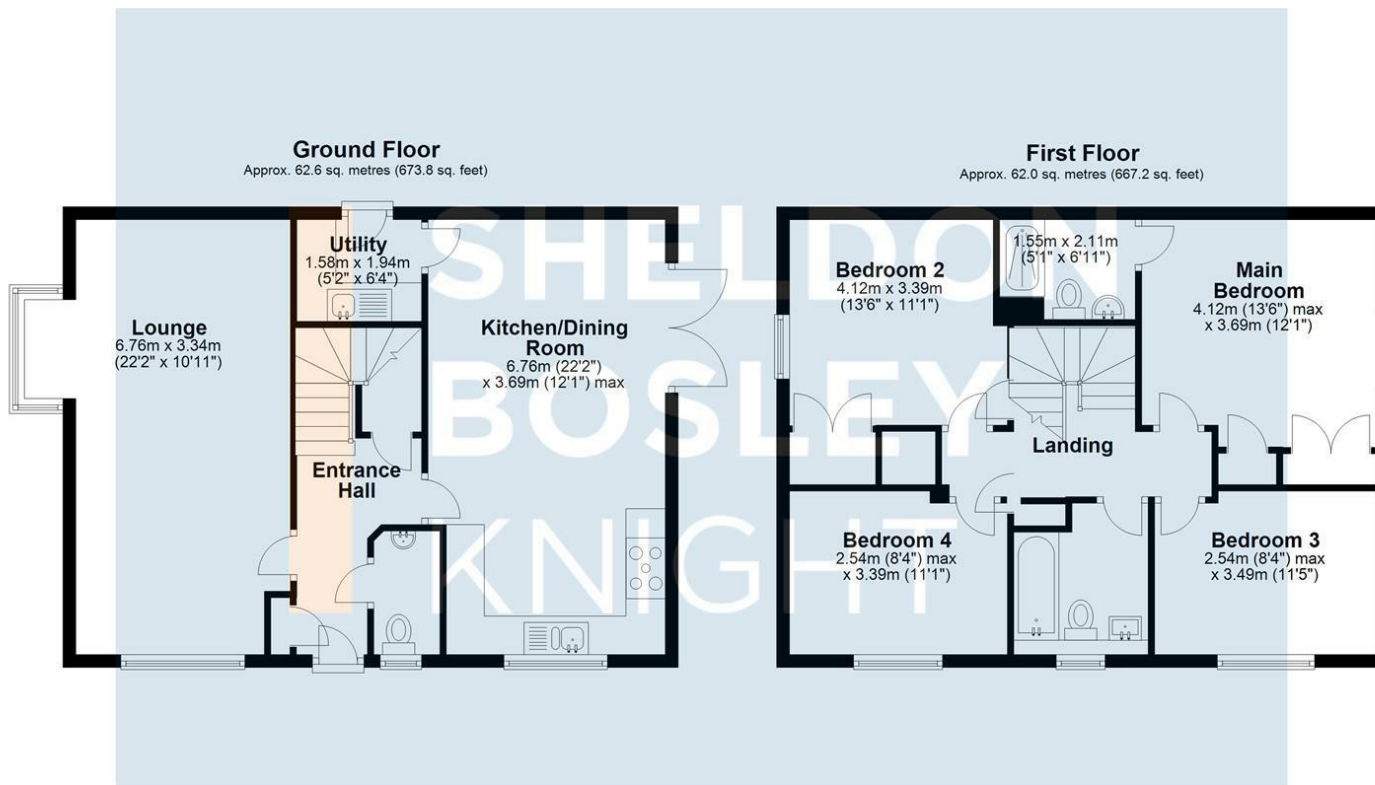








# Floorplan



Total area: approx. 124.6 sq. metres (1341.0 sq. feet)

All efforts have been made to ensure that the measurements on this floorplan are accurate however these are for guidance purposes only.  
Plan produced using PlanUp.



EPC Rating - B

Tenure - Freehold

Council Tax Band - F

Local Authority  
Stratford Upon Avon District Council



# Our Testimonials

Excellent sales team. Chloe, Christian and Leanne supported me throughout a difficult sale and at a very competitive fee. They really know their stuff and I wouldn't hesitate to recommend SBK Evesham. Thank you!

Louise Orchard

Fantastic and easy experience. Nothing was too much to ask and the team were incredible in providing support and reassurance in our first move. Everything was communicated to us professionally and efficiently. Massive thanks to the team for making this move possible.

Anna Stoumann

We found our dream home and needed to sell our house to make an offer. Andrew and the team at Sheldon Bosley knight Leamington were fantastic. They managed to value our home, got photos and floor plans sorted, advertised, completed viewings and we had an above asking price offer accepted in one and a half weeks from first contacting them!! Communication from both Andrew, Sophie and the team plus through their online portal was great throughout. Honestly couldn't have asked for more.

Charlie Foley

Both Amy and Amelia were incredibly helpful and proactive throughout the purchase of our property. The commitment that they both showed to the sellers and us as buyers was second to none and meant that any moving bumps were successfully managed. We would wholeheartedly recommend them to friends and, if we were to consider moving again, would certainly use them.

Emmah Ferguson

I had a great experience while purchasing a house with Sheldon Bosley Shipston on stour. From start to finish they have done everything they can to help and been great with communication. I dealt with Kate and Morgan who were both lovely but I'm sure it was a team effort behind the scenes. I felt like they were there for me and supportive. Thank you to you all!

Georgie Smith

Very helpful and friendly staff. They were happy to provide names of local tradesmen which will be a great help. Would highly recommend.

Jane Harms

A stress free procedure due mainly to the estate agent Rockwell Allen. There was excellent communication and marketing with the bonus of getting the asking price.

Susan

Millie has been absolutely brilliant from the word go. The whole experience has been a breath of fresh air and the complete opposite from our last dealings with an estate agent. Thank you Millie for all your hard work and advice, couldn't be bettered.

Kate

We couldn't recommend Sheldon Bosley Knight more. After having a house sale fall through previously, we were very nervous about making our offer, but the lovely Annette and Sara guided us through everything with ease and made us feel so comfortable with our decisions. We got the house of our dreams, and we are absolutely delighted! They made us feel like friends and we would recommend them to anyone looking to buy their perfect home.

Jen Singleton

To book a free no obligation market appraisal of your property contact your local office.

[sheldonbosleyknight.co.uk](http://sheldonbosleyknight.co.uk)



SALES

LETTINGS

PLANNING &  
ARCHITECTURE

COMMERCIAL

STRATEGIC  
LAND

NEW  
HOMES

BLOCK  
MANAGEMENT

RURAL



DISCLAIMER

All fixtures and fittings mentioned in these particulars are included in the sale, all others in the property are specifically excluded. Photographs are reproduced for general information and it must not be inferred that any item is included for sale with the property. These particulars are thought to be materially correct. Their accuracy is not guaranteed and they do not form part of any contract.