



Secure *Your* Space

A RARE INVITATION TO VIEW A VARIETY OF UNIQUE
HIGH SPECIFICATION WORK ENVIRONMENTS

ACT FAST



An Exclusive Preview

You won't have seen anything like Lynch Wood Park. Located on the outskirts of Peterborough City Centre, it is a highly sought after unique office campus perfect for every type and size of business.

This innovative business destination offers the chance to work, rest and play in an unrivalled, 11.74 hectare, aspirational working environment.

Whether you're a fresh, new start-up or looking to expand your business, you'll find the perfect space in the perfect place.

Suitable for a range of occupiers on a local and national level, our office solutions and tailored space packages are designed to meet your business requirements to ensure you get the most out of your offices, whether its short term or for the long run.

AN UNRIVALLED

TRANQUIL SETTING

SET

WITHIN

A

11.74

HECTARE

SITE



Get Lost At Lunch

YOUR PARK TO EXPLORE

An extension to your offices, you get acres of beautifully landscaped gardens and lakes to inspire work productivity and wellbeing. The natural environment complements the unique architecture to create a rare opportunity for you to enjoy as your workplace.

It'll be easy to forget you're at work.



**OUTDOOR
EVENT SPACE**

**GARDEN
MAZE**

**LANDSCAPED
GARDENS**

**DINING
HALL &
ATRIUM**

**ON SITE CAR
PARKING**

**ON-SITE
GYM**

**CENTRAL
COURTYARD**

LAKE

**GREEN
WHEEL
(CYCLE
ROUTE)**

AN EXCLUSIVE WORK OUT AT WORK

WON'T BE POSSIBLE IF YOU DON'T SECURE YOUR SPACE

Work Out At Work



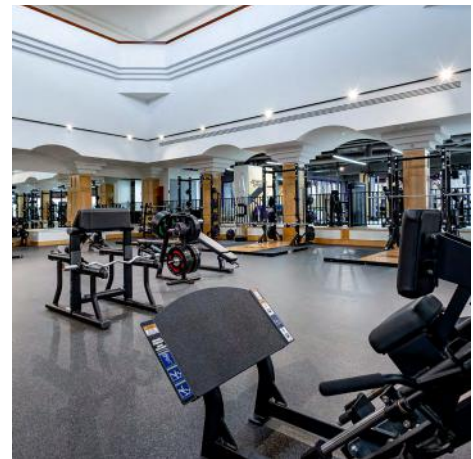
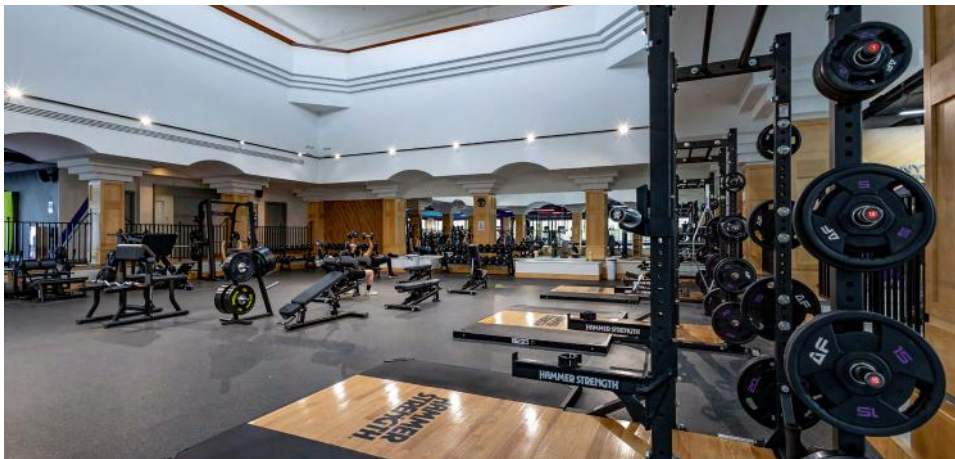
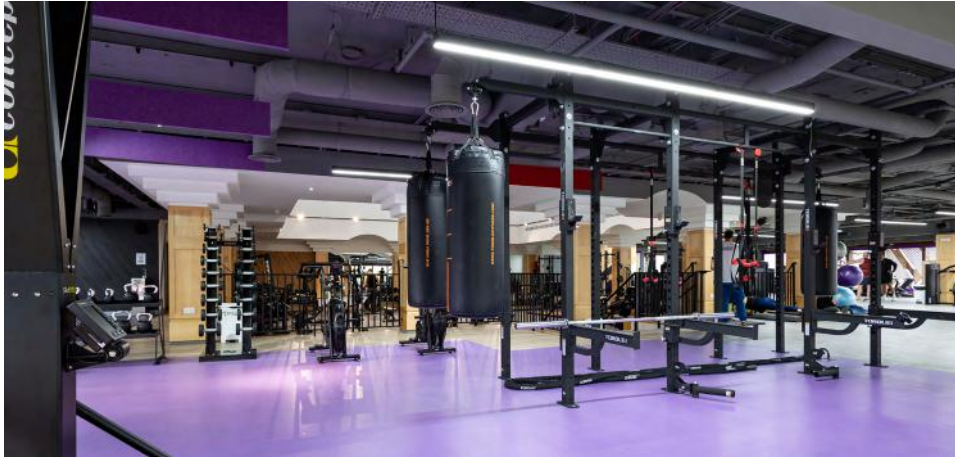
An on-site Anytime Fitness gym like you've never seen before. This is not your typical workplace fitness room squeezed into unwanted areas as an after thought.

Designed with all your fitness needs in mind, Lynch Wood Park provides a large gym environment, classes and fitness training that gives you all the equipment and space you need.

Just one of the rare finds throughout the Park that makes it so highly sought after.

-  PERSONAL TRAINING
-  CHANGING FACILITIES
-  LOCKER SPACE
-  SHOWERS & WC'S





A Destination Restaurant

If you are one of the few lucky enough to acquire the remaining available space at Lynch Wood Park, you'll be one of the first to dine at the newly refurbished on-site restaurant.

An inspirational environment thoughtfully designed to make breakfast, lunch and even dinner a space to eat, meet and greet.

There is also the option to support tenants with catering services for client meetings and events held on-site.





One For All

There is a rare opportunity at Lynch Wood Park for any size business to call it their home.

As a destination workplace it focuses on community, flexibility and growth. It's a space that inspires success.

You can join a thriving community of like minded, individuals from a multitude of sizes, backgrounds and industries.

Everything we do is created to have a positive impact on employees and provide the optimum environment for businesses to flourish.

 **figflexoffices**

FLEXIBLE SERVICED OFFICE SPACE

MEETING ROOMS

VIRTUAL OFFICES

COWORKING

DEDICATED ON-SITE TEAM



After Hours

PERRY MEADOWS IN NENE PARK

7 MINUTE DRIVE



**QUEENSGATE
SHOPPING CENTRE**

13 MINUTE DRIVE

LIDO GARDENS

14 MINUTE DRIVE

**FUN HOUSE
COMEDY CLUB**

14 MINUTE DRIVE

Resting on the edge of Peterborough City Centre, Lynch Wood Park is located in a prime position for businesses to venture out and enjoy not only its historic landmarks but a wealth of leisure and retail experiences in this cosmopolitan city. Set for a £1bn regeneration project be quick to secure your space within a city of growth.

£1B

**PLANNED
REGENERATION
PROJECT**

14 MINUTE DRIVE

**PETERBOROUGH
CATHEDRAL**

14 MINUTE DRIVE

**PETERBOROUGH
MUSEUM & ART GALLERY**

14 MINUTE DRIVE

NEW THEATRE

Lynch Wood Perks

DIRECTION FOR A GREENER WORKPLACE

TAKING STEPS IN THE RIGHT

SECURE YOUR SPACE



We're making moves to create a future-proof Lynch Wood Park and ensure sustainability is at the forefront of our developments.

We've installed state of the art EV Charging points to promote the use of electric cars as the first step in the right direction for an energy efficient future.

We love the wildlife our landscaped gardens and tranquil lake attracts and will continue to enhance our outdoor features to drive sustainability home and lessen our carbon footprint.



CONFERENCE & MEETING ROOM FACILITIES



DEDICATED CONCIERGE



GRADE A OFFICE SPACE



FLEXIBLE & LONG TERM CONTRACTS



FULLY SERVICED RECEPTION AREA



IMPRESSIVE LANDSCAPED SURROUNDINGS



DEDICATED BUILDING & EVENTS MANAGER



ULTRAFAST BROADBAND



EV CHARGING SPACES



1,902 SURFACE & BASEMENT CAR PARKING



BEAUTIFUL ATRIUM COMMUNAL AREAS



PARK MARK'S SAFER PARKING SCHEME



PETERBOROUGH GREEN WHEEL CYCLE ROUTE



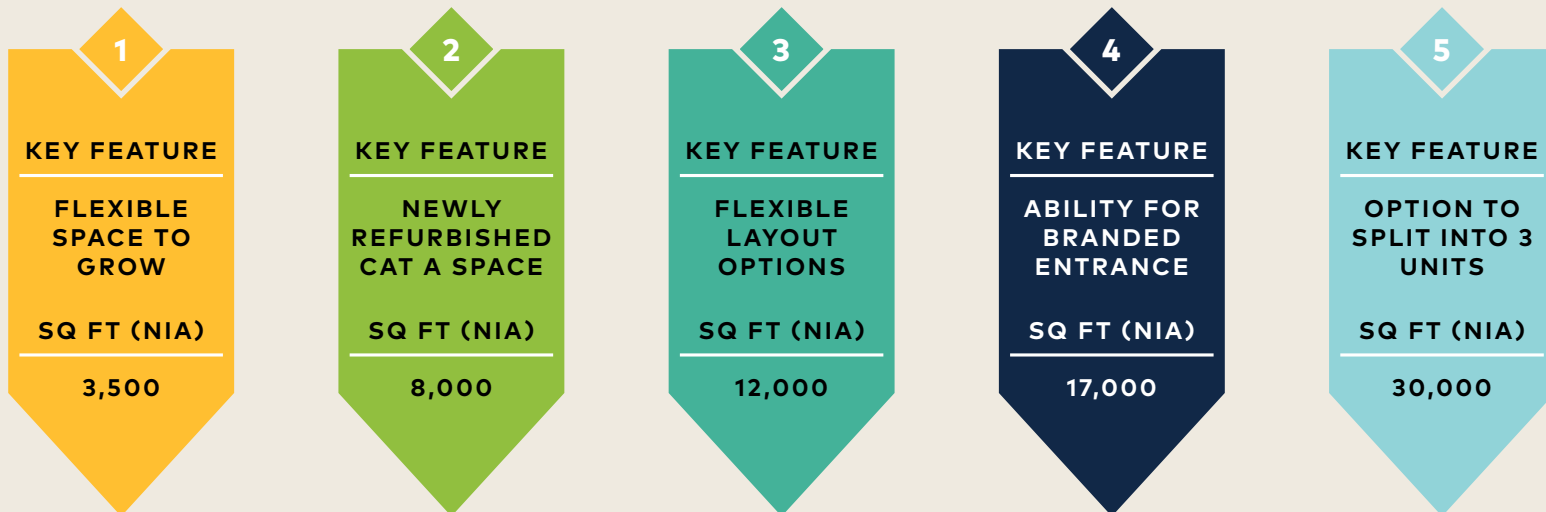
BACKUP POWER GENERATOR



24/7 SITE SECURITY

Secure *Your* Space

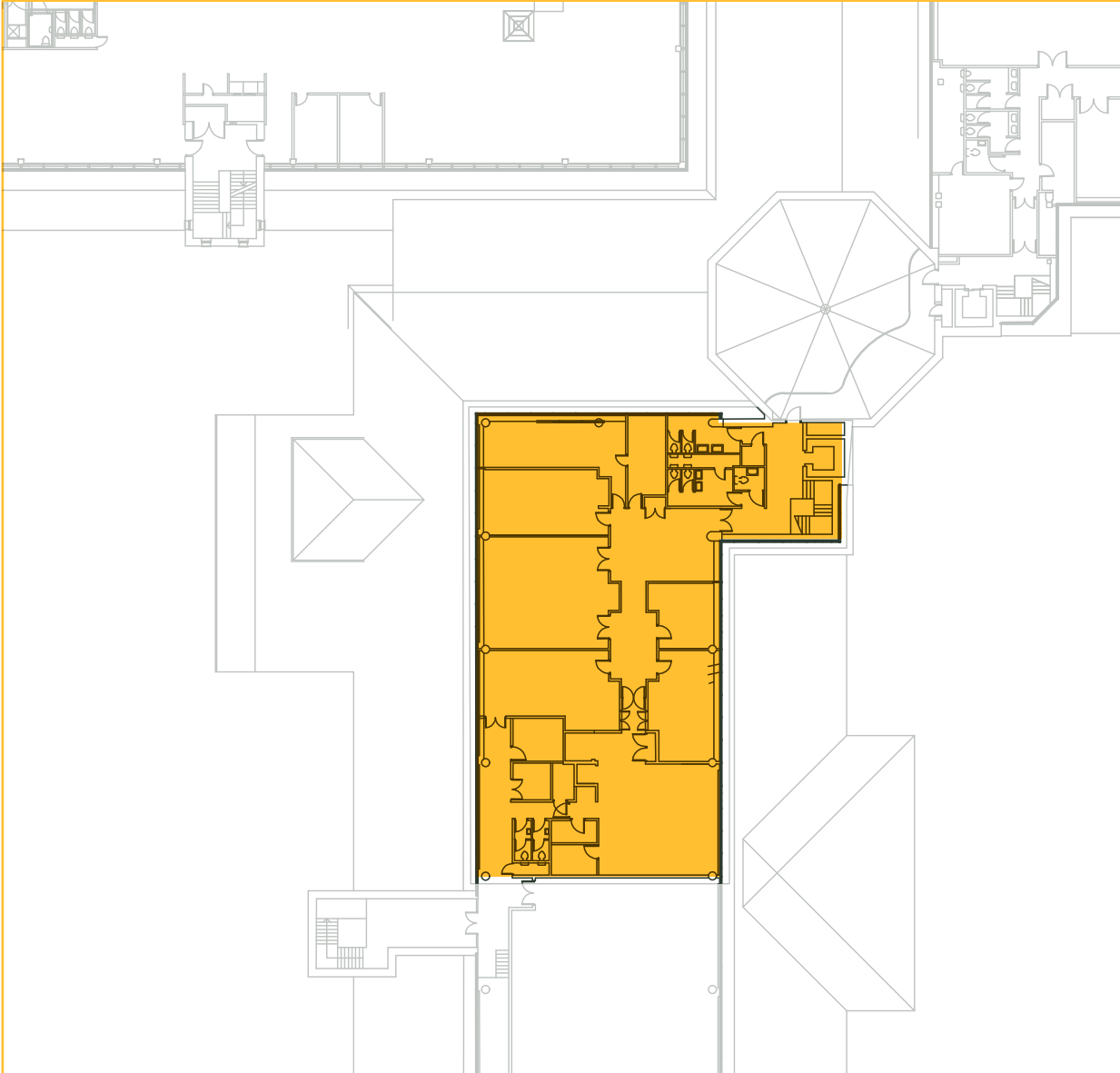
A RARE INVITATION TO VIEW A VARIETY OF UNIQUE
HIGH SPECIFICATION WORK ENVIRONMENTS





WATERFRONT SUITE

FIRST FLOOR



The 3,500 Sq Ft wing provides individual offices ranging from 180 to 3,500 Sq Ft in size, creating a flexible workspace for tenants.

The wing can be taken as a whole to create a self-contained unit, offering tenants privacy and independence while still being part of a larger business community. The layout is customizable to meet specific business needs, making it an ideal option for businesses seeking a workspace that can be tailored to their needs.

3,500 SQ FT WING WITH OFFICES

180 - 1,500 SQ FT FLEXIBLE WORKSPACE

PRIVATE AND SELF-CONTAINED

CAT A+ OFFICE OPTION

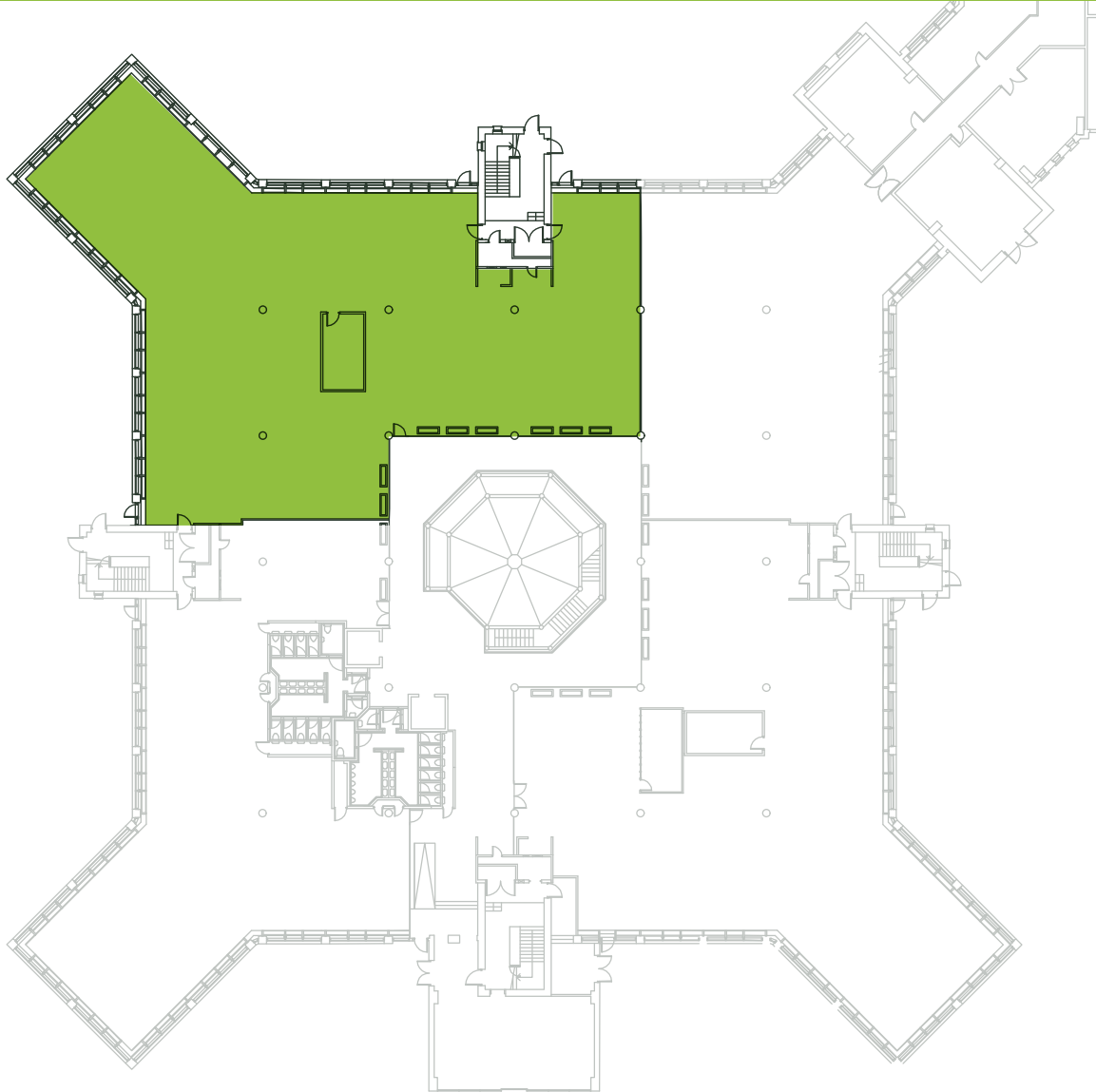
TURNKEY OPTIONS AVAILABLE

AVAILABLE



NENE

GROUND FLOOR



The Nene building, is separate from the main building of Lynch Wood Park and features a recently refurbished ground floor.

The glass frontage provides a stunning view of the atrium area while the building's rear is also glass, offering a picturesque view of the grounds. The space is classified as CAT A, providing an ideal canvas for tenants to customise the space to their unique needs. The flexible layout also allows for the potential to split the area into two distinct suites, accommodating a variety of business needs.

GROUND FLOOR

8,000 SQ FT

NEWLY REFURBISHED

GLASS FRONTAGE & REAR

CAT A+ - (OPTION TO SPLIT INTO 2 SUITES)

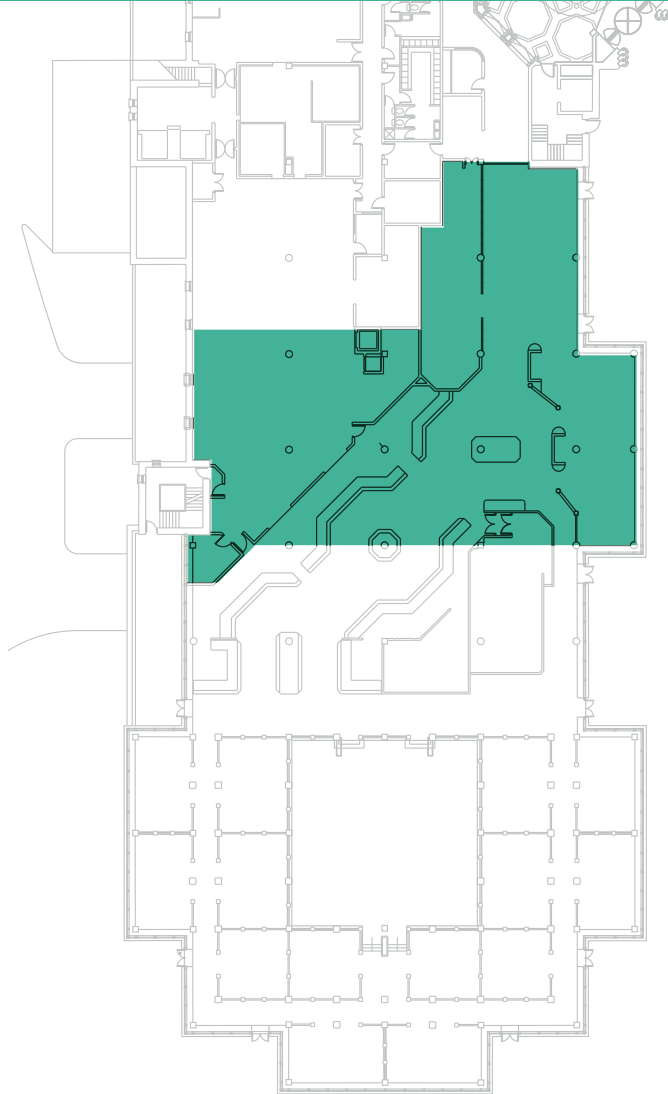
TURNKEY OPTIONS AVAILABLE

AVAILABLE



FOUNTAIN SUITE

FIRST FLOOR



This 12,000 square foot space is located between the gym and the new restaurant area and boasts brand new CAT A amenities.

The space offers stunning views overlooking the water features outside reception, creating a peaceful and inspiring work environment. The layout of the space is flexible and can be split in half, providing businesses with the option to customise the area to their needs. This space presents an excellent opportunity for companies seeking a modern and flexible workspace in a prime location with breathtaking views.

12,000 SQ FT

VIEW OF THE RECEPTION AND GARDENS

FLEXIBLE LAYOUTS (CAN BE SPLIT IN 2)

OWN FRONT DOOR

NEW AC AND LED LIGHTING

CAT A+ OFFICE SPACE

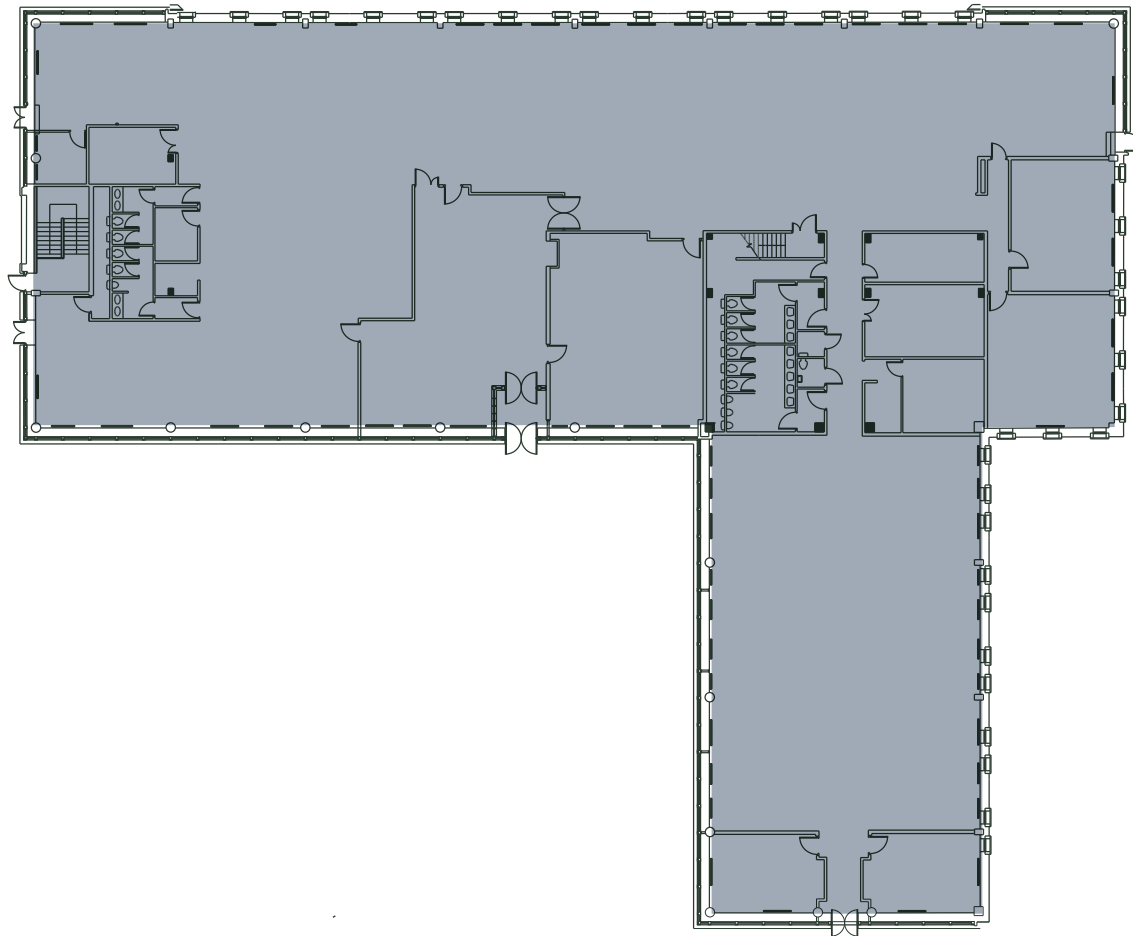
TURNKEY OPTIONS AVAILABLE

AVAILABLE



THE PEARL CENTRE

GROUND FLOOR



This self-contained building, with a floor area of 17,000 square feet, is situated near the entrance of the park.

As a self-contained unit, it offers all the amenities of the business park while still maintaining privacy. It also allows for the ability to have a privately branded entrance if the space is secured at an early stage.

The space is ideal for businesses seeking a modern, comfortable workspace with natural light and access to the business park's amenities as well as space to create your own canteen/restaurant.

SELF CONTAINED BUILDING

17,000 SQ FT

OPTION TO BRAND ENTRANCE

PRIVATE TERRACE

ACCESS TO ON-SITE AMENITIES

CAT A+ OFFICE SPACE

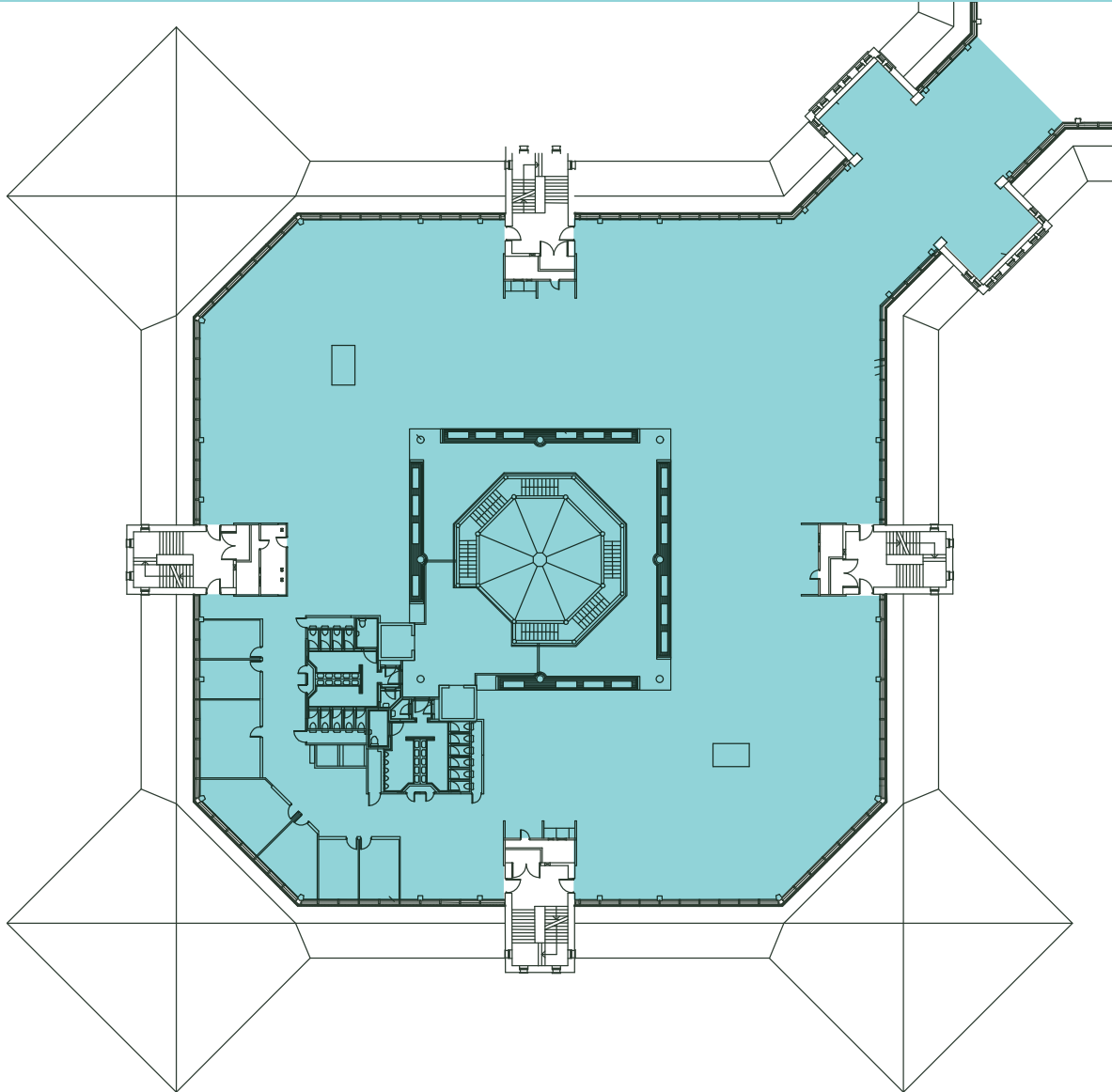
TURNKEY OPTIONS AVAILABLE

AVAILABLE



NENE

SECOND FLOOR



The top floor of the Nene building is a grade A office space, boasting an impressive 30,000 Sq Ft.

Tenants will enjoy excellent connectivity to the main atrium and new restaurant via an interlinking corridor. It features glass frontage to maximise views of the grounds including the onsite maze, and lake. The space is set to undergo a renovation to CAT A standards, offering businesses the opportunity to customise the area to their specific needs.

SECOND FLOOR

30,000 SQ FT

NEWLY REFURBISHED (GRADE A)

GLASS FRONTAGE & REAR

CAT A+ (OPTION TO SPLIT INTO 3 SUITES)

TURNKEY OPTIONS AVAILABLE

AVAILABLE





A New Phase Of Growth

As well as one of the UK's fastest-growing cities, Peterborough has been recognised as one of the most cost-effective locations for business, making the city ideal for start-ups, SME's and leading companies.

Famous for its towering Cathedral its also now known for being the UK's first Gigabit City and is set for a £1bn regeneration project which will throw Peterborough into an exciting new phase of growth.

Already home to a variety of world-class leaders making the city an exciting and innovative business hub, there's no better time for you to put down roots in this booming city.

1 OF THE FASTEST
GROWING CITIES IN
THE UK



£1BN CITY CENTRE
REGENERATION



£30M
UNIVERSITY SET
TO OPEN IN 2022



£43M RAILWAY STATION
REDEVELOPMENT



£30M FULL-
FIBRE NETWORK
TO NEARLY ALL
PROPERTIES



£60M 77,000 SQ
FT EXTENSION
OF QUEENSGATE
SHOPPING CENTRE



£1.2BN INVESTED TO RAIL
JOURNEYS INTO LONDON



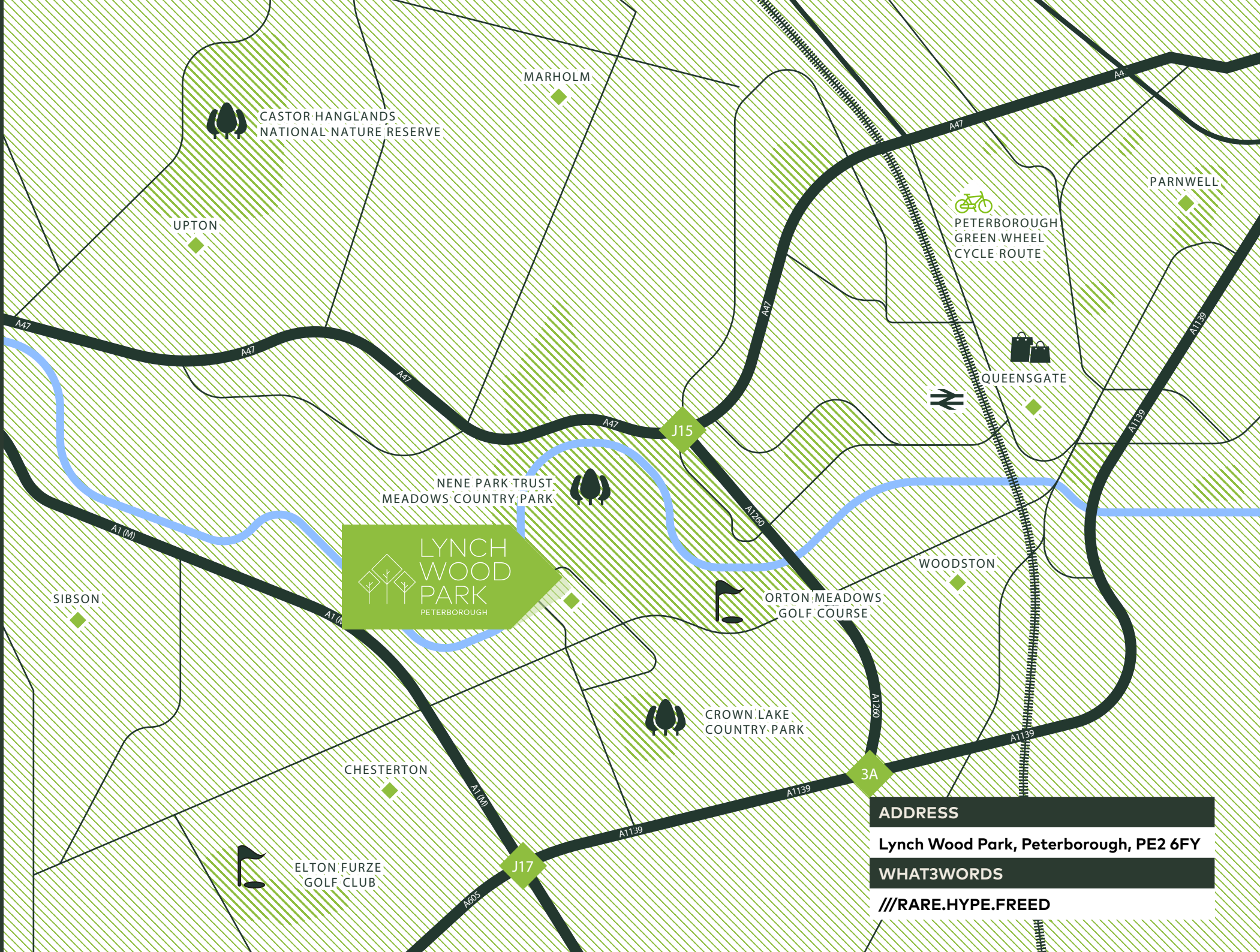
£120M FLETTON QUAYS
REGENERATION





LYNCH
WOOD
PARK
PETERBOROUGH

- 1 Associated British Foods plc
- anglianwater
- Close Brothers
- ATKINS
- 2  Persimmon
- 3  ab agri
- 4  BAUER
MEDIA GROUP
- 5  Coloplast
-  RSA
-  Kidney Research UK
- 6  Marriott®
- 7  TESCO

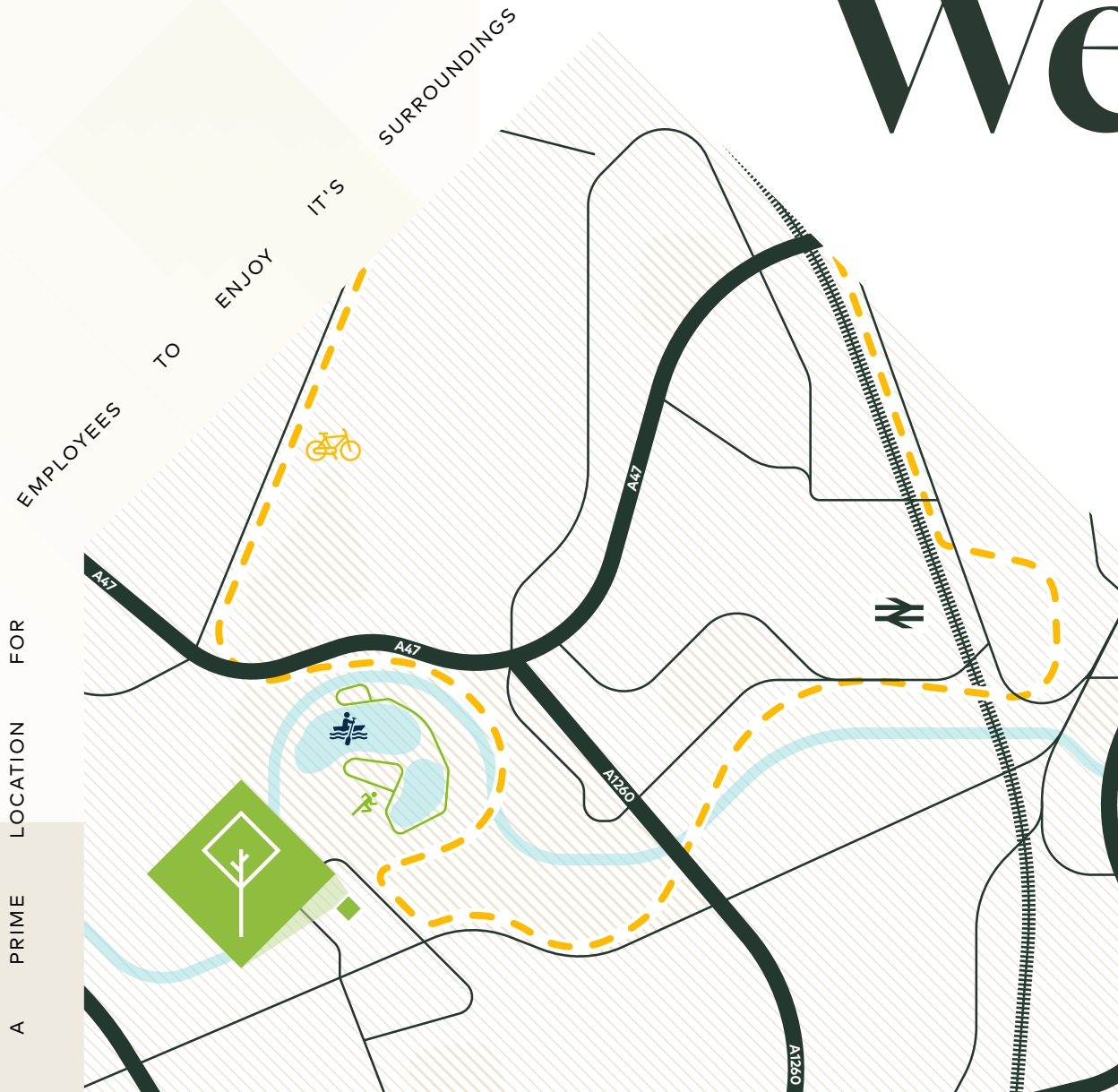


LYNCH
WOOD
PARK
PETERBOROUGH

ADDRESS
Lynch Wood Park, Peterborough, PE2 6FY

WHAT3WORDS
///RARE.HYPE.FREED

Workplace Wellness



**PETERBOROUGH
GREEN WHEEL**



**PETERBOROUGH CITY
ROWING CLUB**

The lake, which is home to Peterborough City Rowing Club, is one of the few purpose-built 1,000-meter rowing lakes in the country. It annually hosts three of the largest club regattas in the UK.



NENE PARK

Nene Park is just a short distance from Lynch Wood Park offering a fantastic running route as well as a range of other outdoor activities such as: water sports, cycling, swimming, fishing and golf.

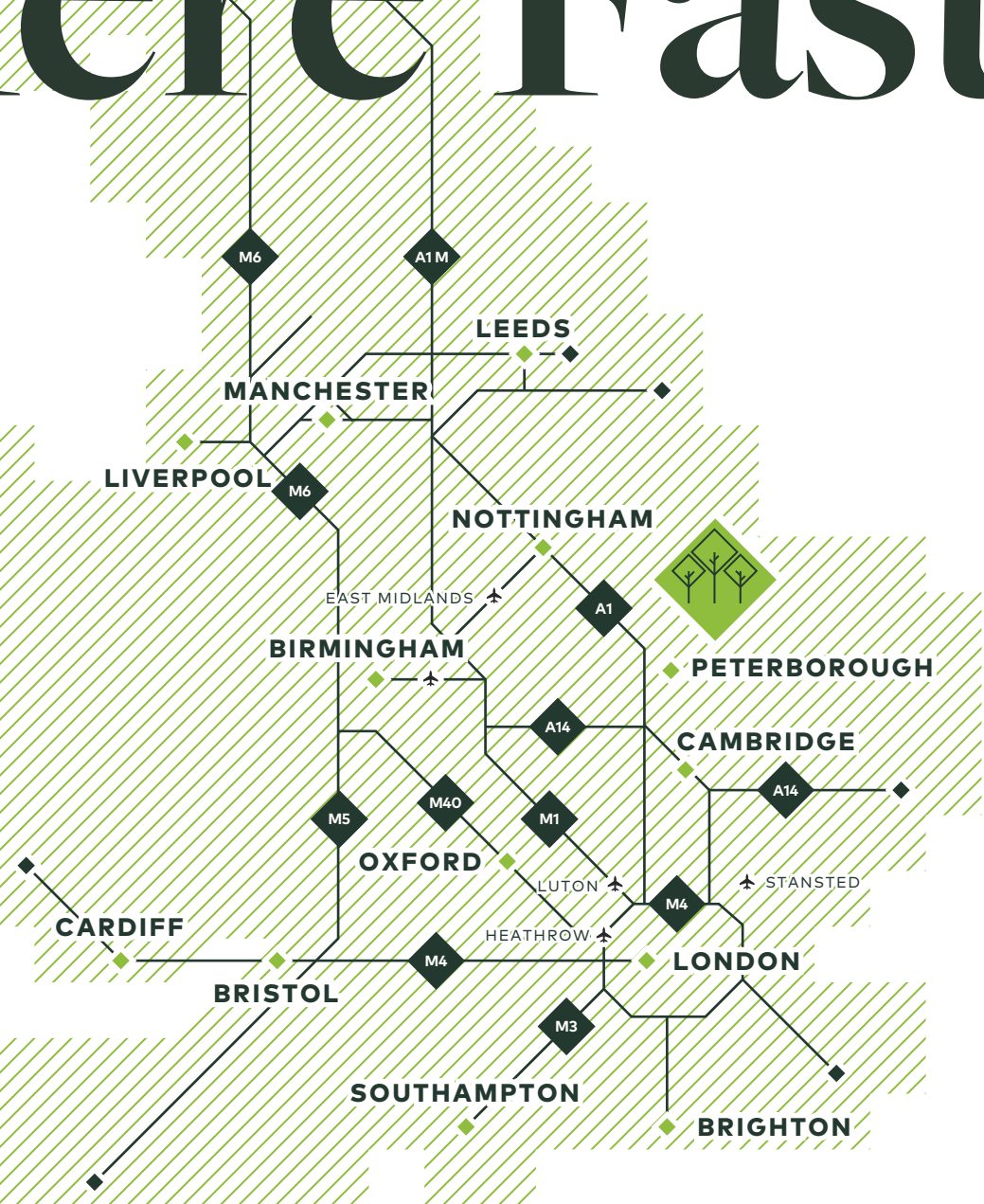
Get Here Fast

Located just outside of Peterborough City Centre, Lynch Wood Park is based in a prominent position for excellent transport links. With great access to the A1 and A14, you'll stay connected to the national motorway network and gain easy connections to the wider UK.

You can hop on a train and get to London in 45 minutes, or take the regular bus service which runs directly from Lynch Wood Park until 9pm.

CAR	MILES
Cambridge	40
Nottingham	58
Birmingham	85
London	98
Manchester	155

RAIL	MINS
London	45
Cambridge	50
Birmingham	105
Leeds	110
Manchester	145





A1139

A1 (M)

ORTON
PARKWAY

LYNCH
WOOD
PARK
PETERBOROUGH

NOW'S THE TIME TO

Secure *Your* Space

A Development by FI Real Estate Management



RYAN BARBER

rbarber@fi-rem.com
07919 047 036

JOEY SAVAGLIA

jsavaglia@fi-rem.com
07552 827 889



WILLIAM ROSE

wrose@savills.com
07870 999 566
01733 201 291



SOPHIE DICKENS

sophiedickens@tydusre.com
07763 206 550

Crafted by Cab Property

FI Real Estate Management or Savills for themselves and for the vendors or lessors of this property whose agents they are give notice that: (i) the particulars are set out as a general guideline only for the guidance of intending purchasers or lessees and do not constitute, nor constitute part of an offer or contract. (ii) all descriptions, dimensions, references to condition and necessary permission for use and occupation, and other details are given in good faith and are believed to be correct but any intending purchasers or tenants should not rely on them as statements or representation of fact but satisfy themselves by inspection or otherwise as to the correctness of each of them. (iii) no person in the employment of FI Real Estate Management or Savills has any authority to make or give any representation or warranty whatever in relation to this property. (iv) all rentals and prices are quoted exclusive of VAT. April 2023.