

FI REAL ESTATE
MANAGEMENT

0845 500 61 61
www.fi-rem.com

MEZZANINE FLOORS

Making spaces work harder

www.fi-rem.com



Mezzanine floors

Designed and installed by the experts

Mezzanine floors are a great way to get more square meterage in a building and use it's height. So many businesses fail to use the space they already have above their heads.

Adding a mezzanine floor can mean the difference between re-locating and not re-locating.

Whether you need extra storage space, production areas, or office space, adding a well-designed mezzanine floor and making better use of space already occupied can save companies a lot of money.

We can provide all aspects of mezzanine floor projects including:

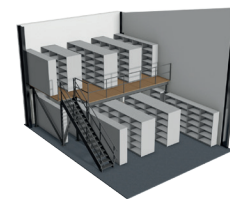
- Full project & risk management
- Full compliance tailored to usage
- Building control pre-approved designs
- Fire protection and detection
- Lighting and emergency lighting
- Heating and air conditioning
- Goods lifts and conveyor systems

Areas can also be divided up with steel partitions to create self-store units.

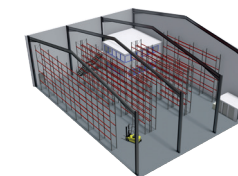
Mezzanines can be multi-tiered where space and floor slab design allows, meaning you get even more use out of the space.

Where floor slabs are not sufficient for the load to be imposed, we can specify and implement structural piles.

Mezzanine Floor configurations



P4-5
Mezzanine Storage Floor



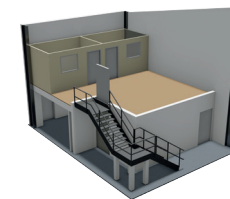
P10-11
Mezzanine Office & Warehouse Floor



P6-7
Mezzanine Gym Floor



P12-13
Warehouse Racking

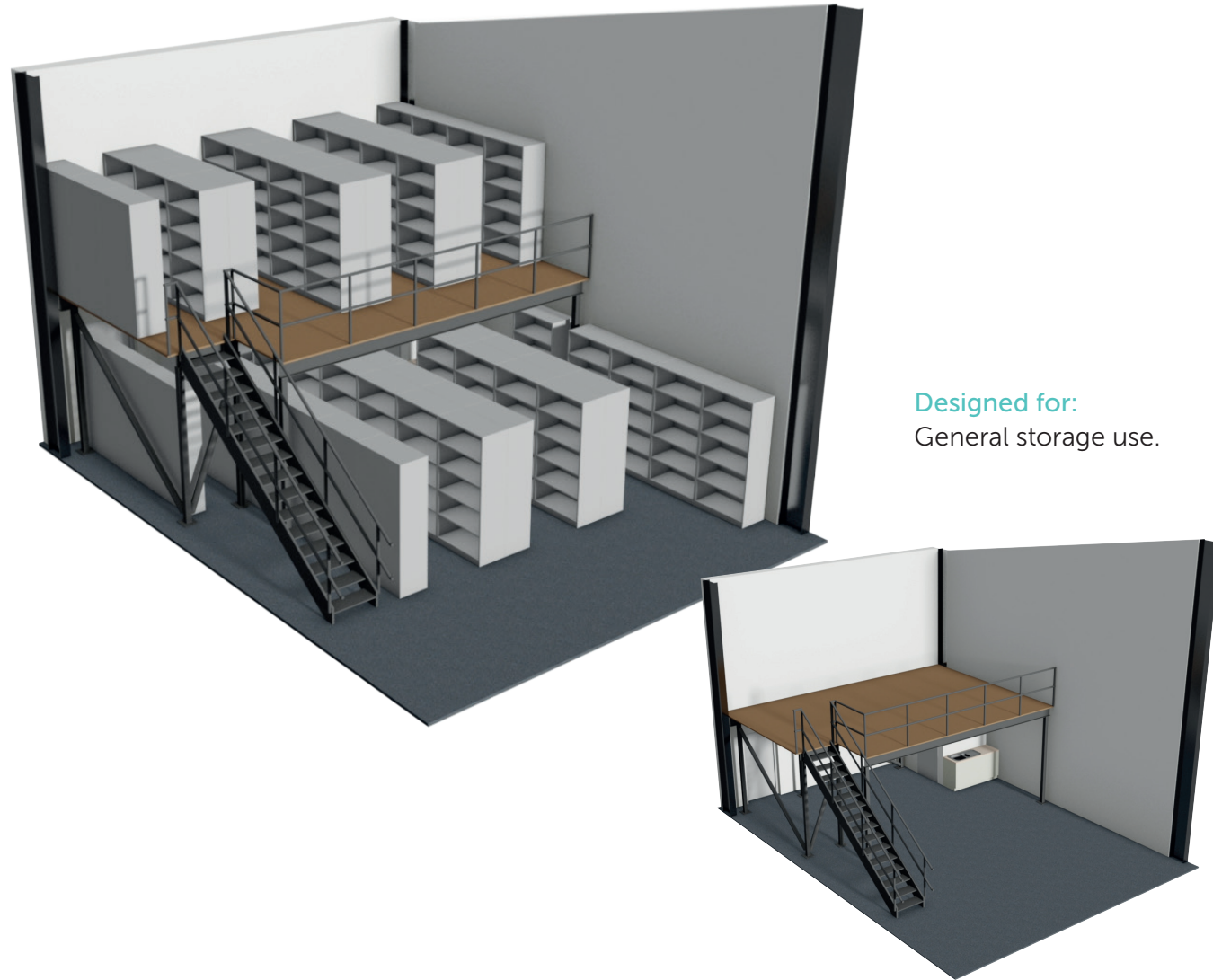


P8-9
Mezzanine Office Floor



P14-15
Office Fit-outs/ Refurbishments

Mezzanine Storage Floor option



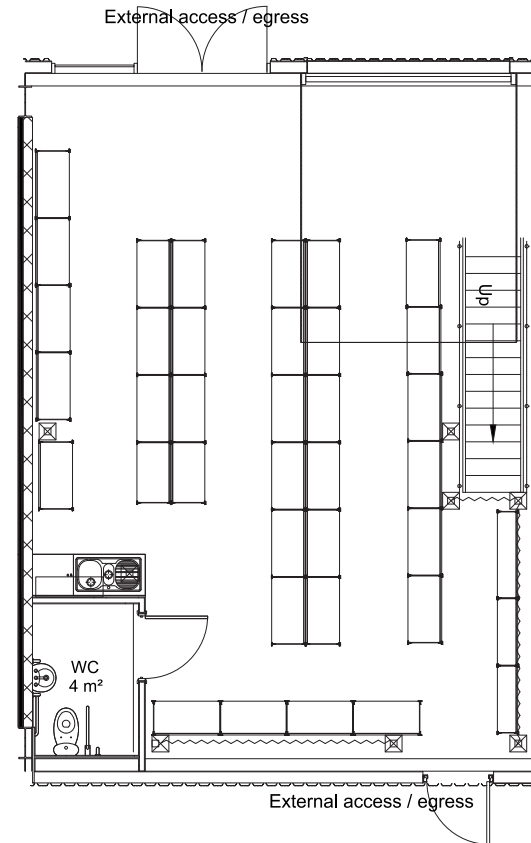
Designed for:
General storage use.

Structural Specification:

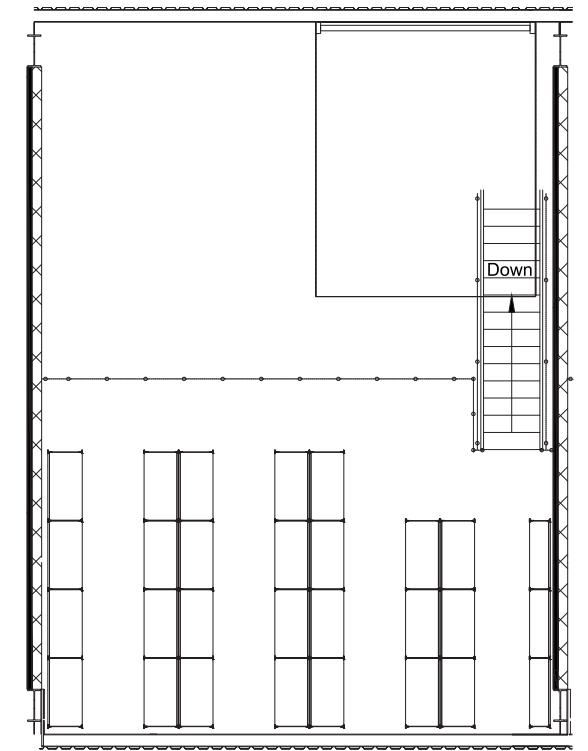
- Staircase to comply to document 'K' Utility Access Staircase
- The flooring system has no structural reliance on the existing building fabric
- No access is to be allowed to the first floor level for the general public

Electrical Specification:

- The lighting systems, emergency lighting system and illuminated exit signs are to be installed in accordance with BS5266 & BS5499
- All electrical switching is to conform to ADM 4.25 through to 4.30



Ground Floor, with shelving



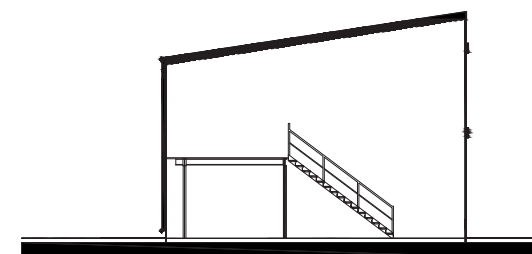
First Floor, with shelving



Mezzanine front view, without shelving



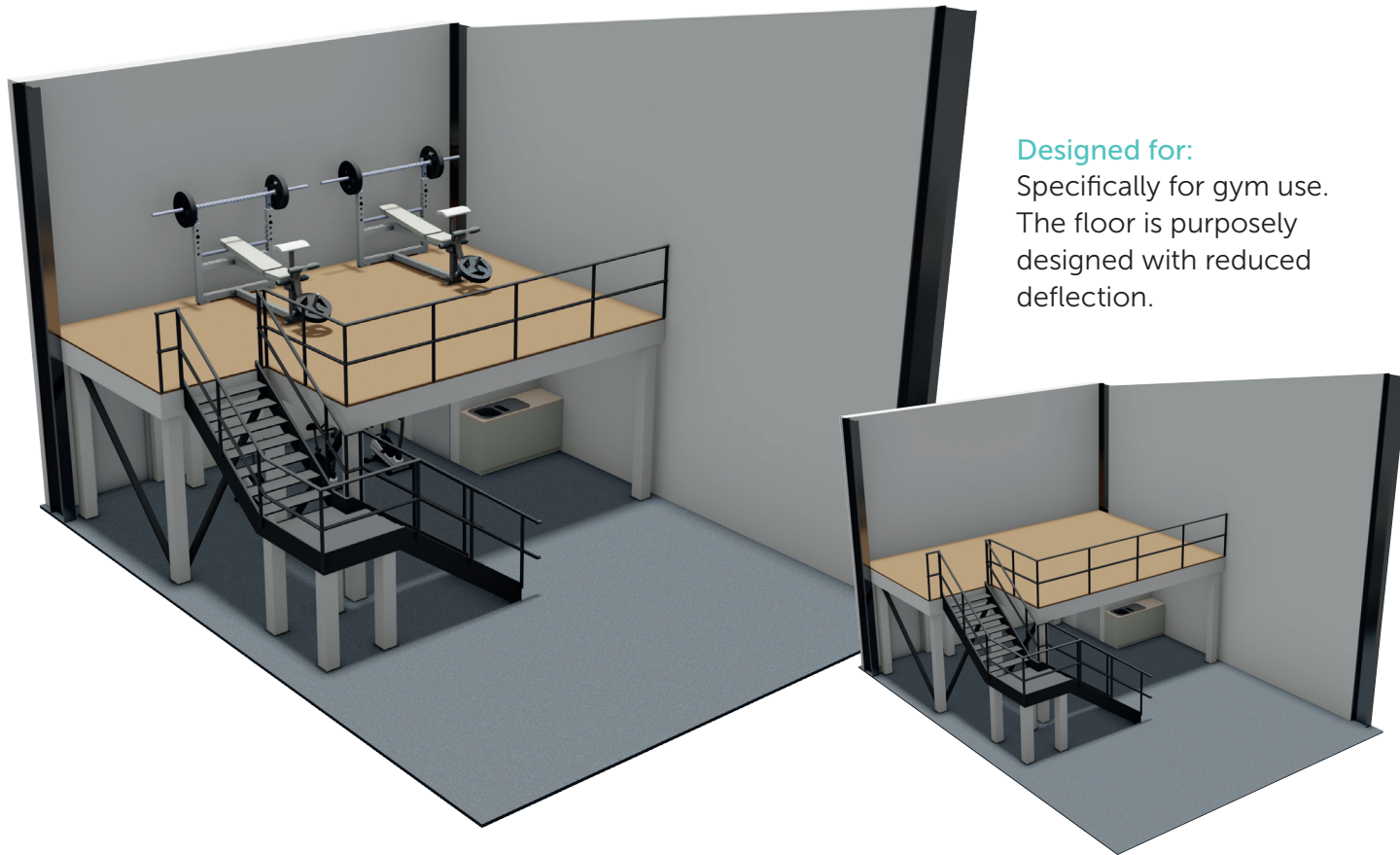
Mezzanine front view, with shelving



Side profile of staircase



Mezzanine Gym Floor option



Designed for:
Specifically for gym use.
The floor is purposely designed with reduced deflection.

Structural Specification:

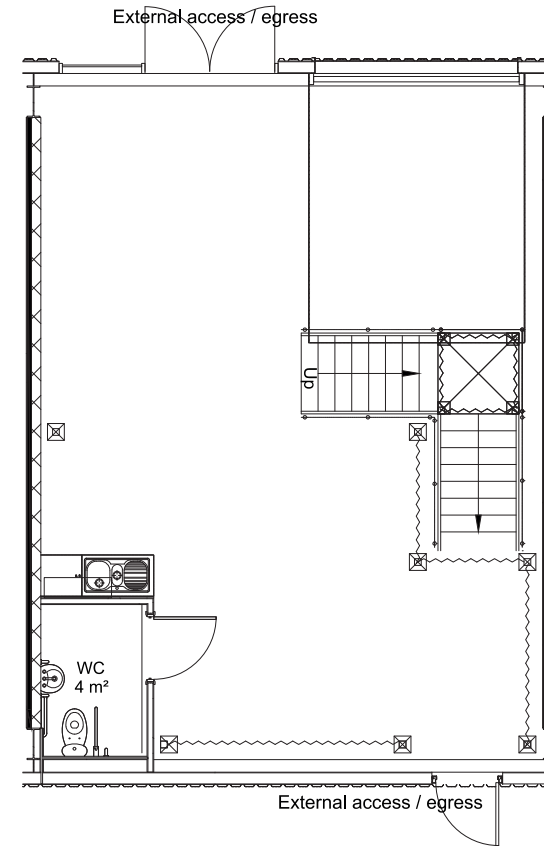
- Staircase to comply to document 'K' General Access Staircase
- The flooring system has no structural reliance on the existing building fabric

Fire Protection:

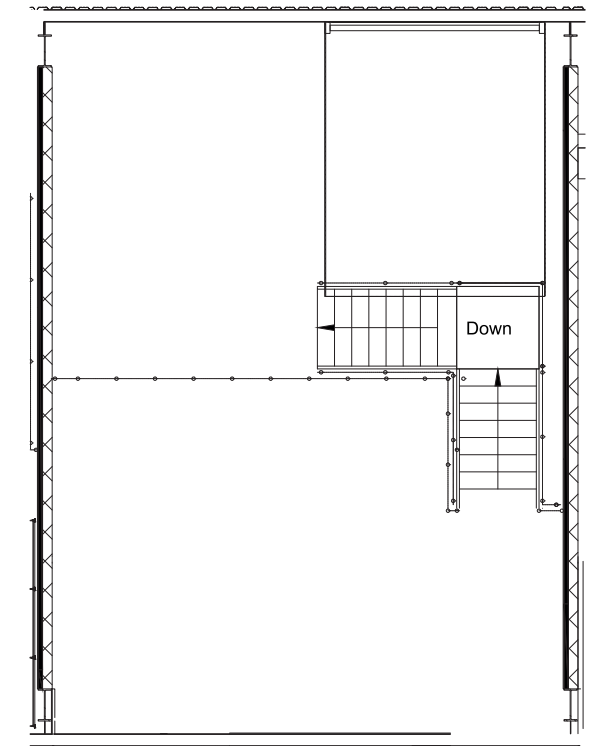
- Ground floor ceiling: 1 hour fire rated suspended exposed grid system
- 600x600mm ceiling tiles are to be used to form the covering
- The system is to be suspended from the underside of the floor system including the landing area
- Ceilings to comply with ADB appendix A-A3
- 60 minute fire rated column cases to all columns
- 60 minute fire rated bulkhead to all open edges

Electrical Specification:

- The smoke detection system is to be installed in accordance with BS5839. Part1 2002
- The lighting systems, emergency lighting system and illuminated exit signs are to be installed in accordance with BS5266 & BS5499
- All electrical switching is to conform to ADM 4.25 through to 4.30



Ground Floor



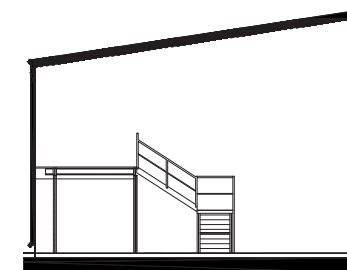
First Floor



Mezzanine front view, without gym equipment



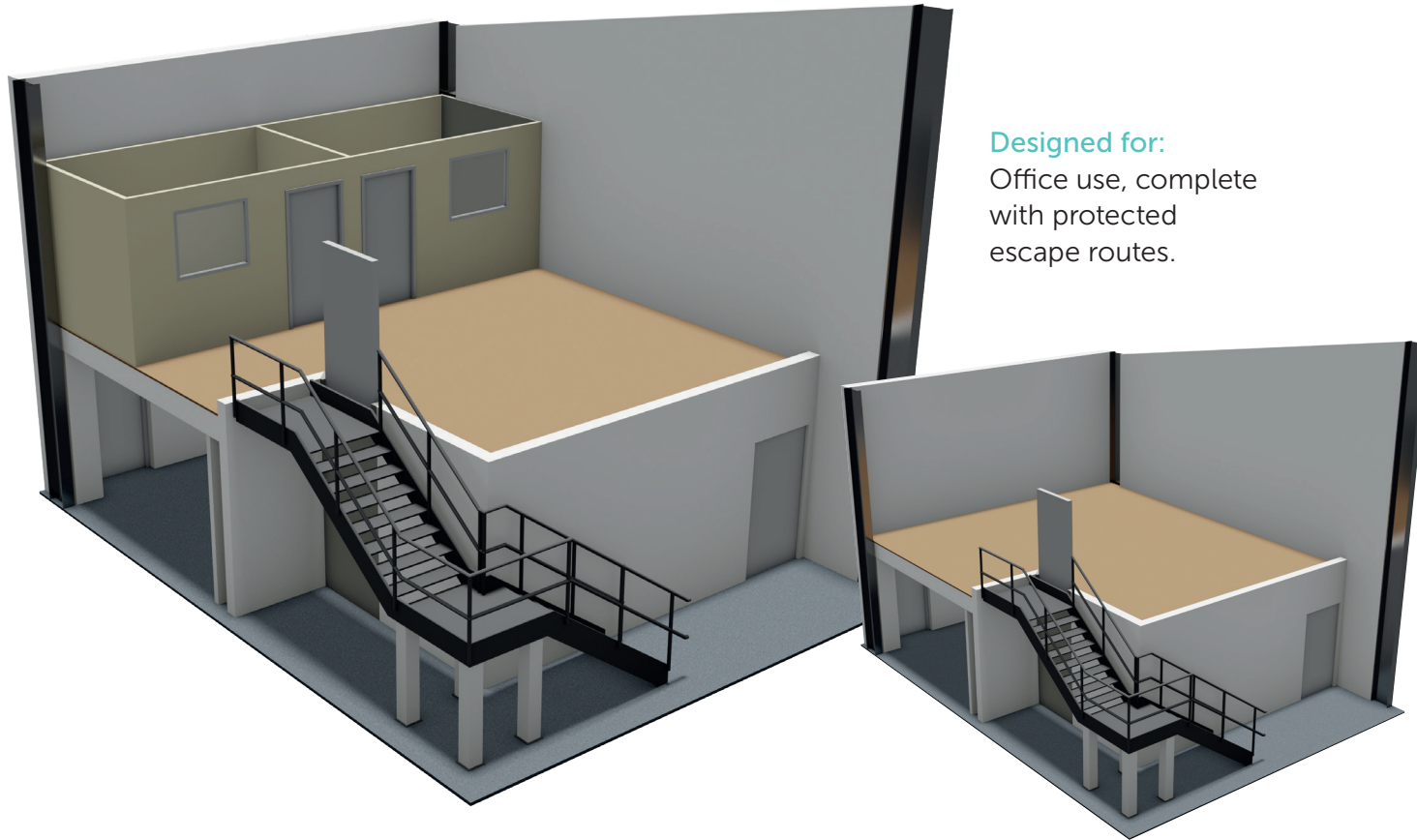
Mezzanine front view, with gym equipment



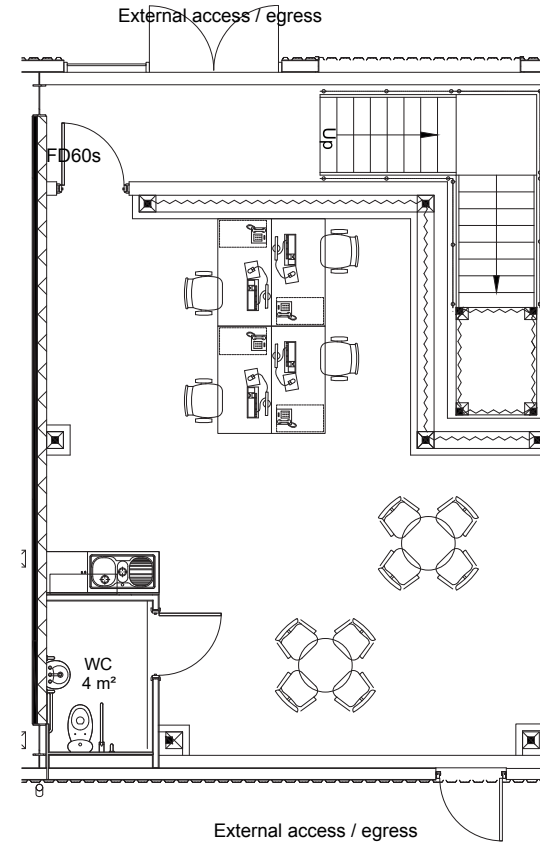
Side profile of staircase



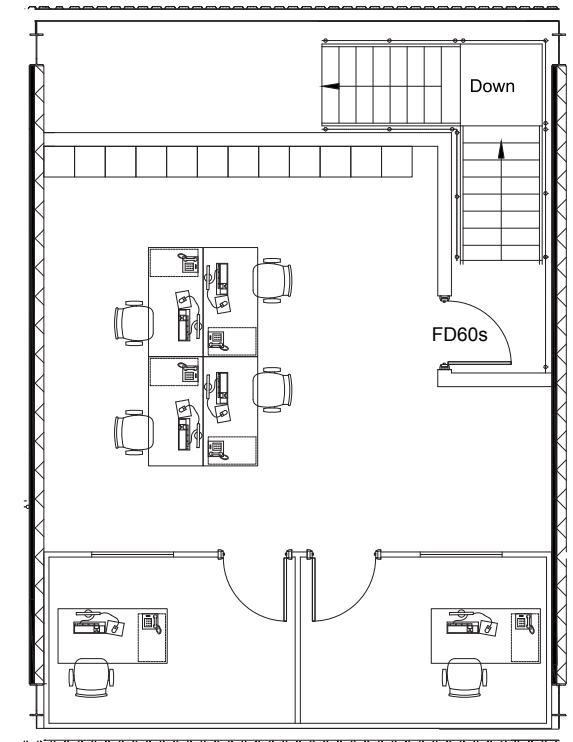
Mezzanine Office Floor option



Designed for:
Office use, complete with protected escape routes.



Ground Floor



First Floor

Structural Specification:

- Staircase to comply to document 'K' General Access Staircase
- The flooring system has no structural reliance on the existing building fabric
- No access is to be allowed to the first floor level for the general public

Fire Protection:

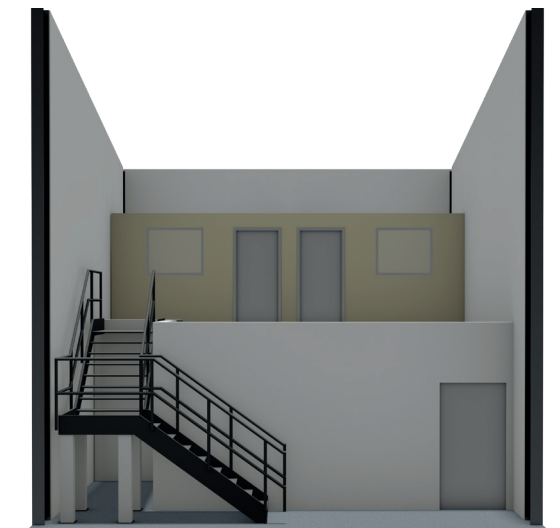
- Ground floor ceiling: 1 hour fire rated suspended exposed grid system
- 600x600mm ceiling tiles are to be used to form the covering
- The system is to be suspended from the underside of the floor system including the landing area
- Ceilings to comply with ADB appendix A-A3
- 60 minute fire rated column cases to all columns
- 60 minute fire rated bulkhead to all open edges

Electrical Specification:

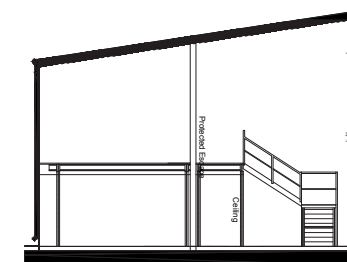
- The smoke detection system is to be installed in accordance with BS5839. Part1 2002
- The lighting systems, emergency lighting system and illuminated exit signs are to be installed in accordance with BS5266 & BS5499
- All electrical switching is to conform to ADM 4.25 through to 4.30



Mezzanine front view, without office



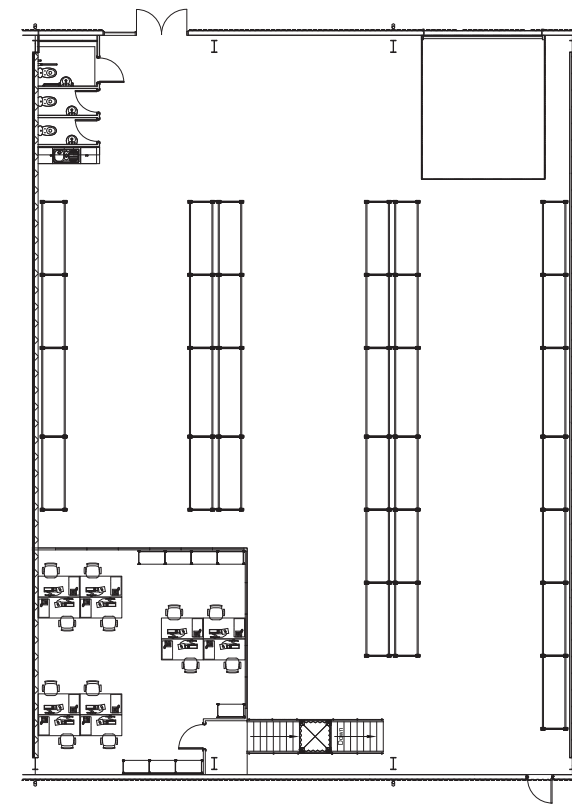
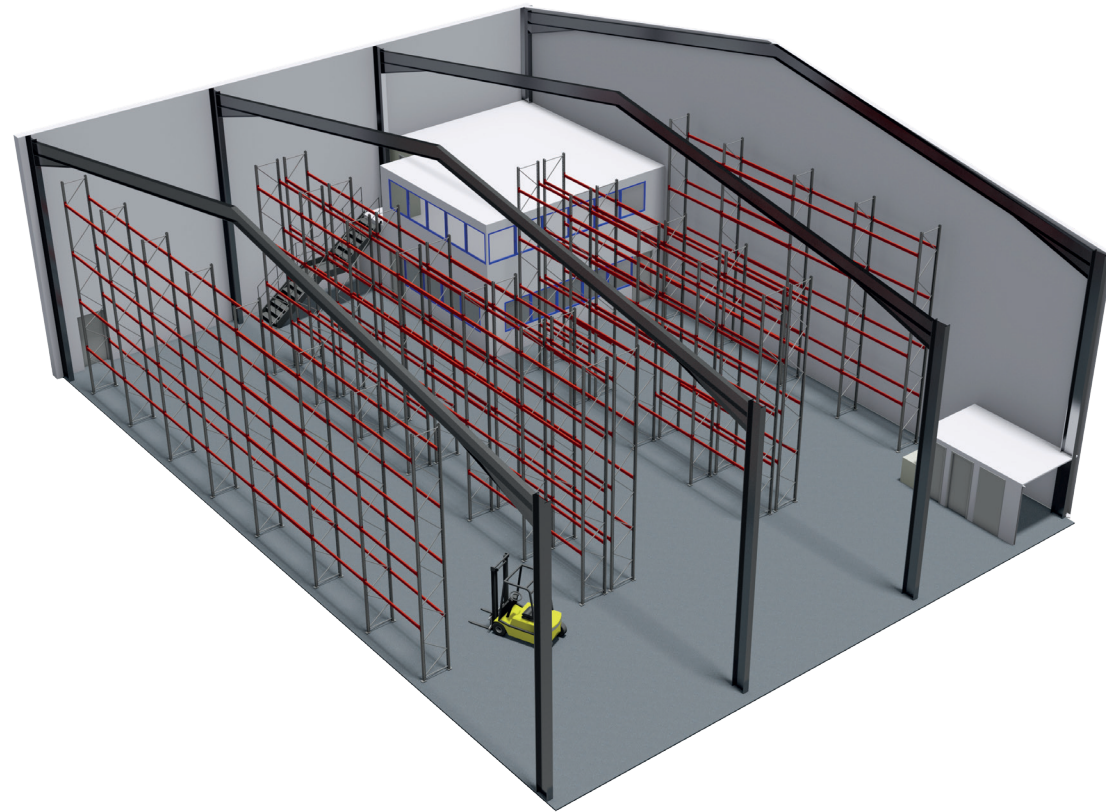
Mezzanine front view, with office



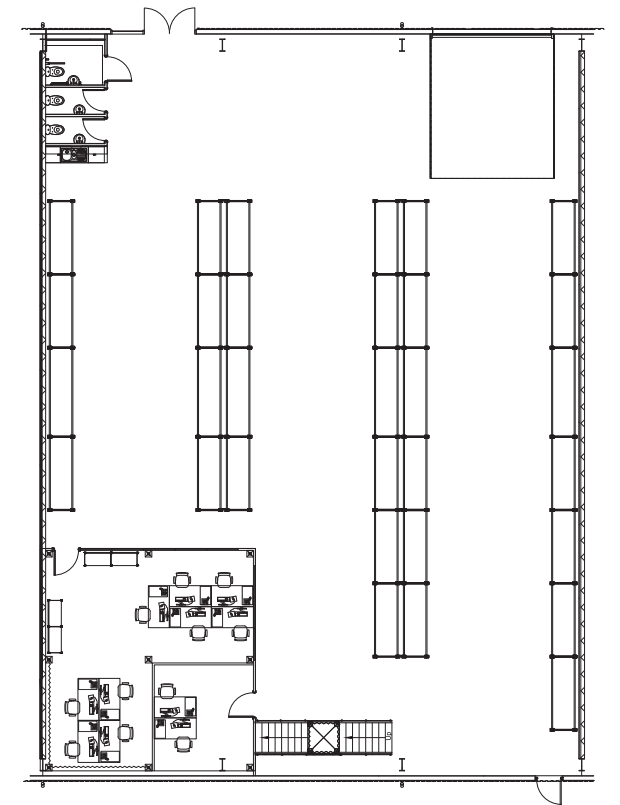
Side profile of staircase



Mezzanine Office & Warehouse Floor option



Ground Floor



First Floor

Structural Specification:

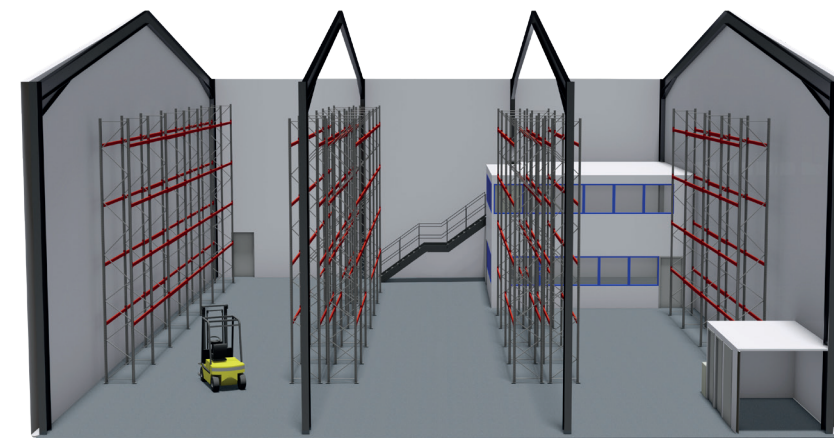
- Staircase to comply to document 'K' General Access Staircase
- The flooring system has no structural reliance on the existing building fabric
- No access is to be allowed to the first floor level for the general public

Fire Protection:

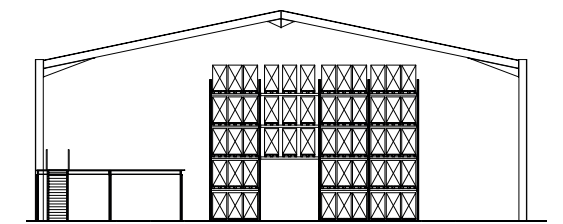
- Ground floor ceiling: 1 hour fire rated suspended exposed grid system
- 600x600mm ceiling tiles are to be used to form the covering
- The system is to be suspended from the underside of the floor system including the landing area
- Ceilings to comply with ADB appendix A-A3
- 60 minute fire rated column cases to all columns
- 60 minute fire rated bulkhead to all open edges

Electrical Specification:

- The smoke detection system is to be installed in accordance with BS5839. Part1 2002
- The lighting systems, emergency lighting system and illuminated exit signs are to be installed in accordance with BS5266 & BS5499
- All electrical switching is to conform to ADM 4.25 through to 4.30



Mezzanine front view, with two storey office



Side profile of staircase and racking

Partitioning Specification:

- Designed to suit your requirements
- Wide range of partitioning systems available to suit all budgets and applications

Racking Specification:

- Designed to suit your requirements
- Designed for all budgets and applications to suit your pallet styles and pick rates

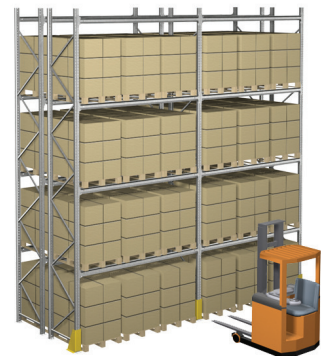


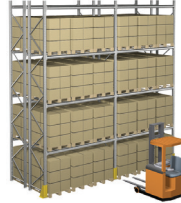


Warehouse Racking options

Save time and money choosing the right storage for your goods and pick-rate needs.

Whether it be the simplest racking to a fully automated system, we work with you to design and install the right system for your requirements.

Call our team of experts to find out more.



Racking Systems			
FEATURES CHECKLIST	WIDE AISLE	NARROW AISLE	VERY NARROW AISLE (VNA)
Use of floor space	★★★★★	★★★★★	★★★★★
Use of cubic storage space	★★★★★	★★★★★	★★★★★
Access to individual pallet loads	★★★★★	★★★★★	★★★★★
Speed of access and throughput	★★★★★	★★★★★	★★★★★
Efficiency in stock rotation	★★★★★	★★★★★	★★★★★
Efficiency in stock control	★★★★★	★★★★★	★★★★★
Specialised Handling Equipment	None	Dedicated Trucks	Dedicated Trucks
Ease of Re-location	★★★★★	★★★★★	★★★★★
Ease & Speed of Installation	★★★★★	★★★★★	★★★★★
Adjustability of beam positions	★★★★★	★★★★★	Not Required
Movo Compatible	Yes	Yes	n/a

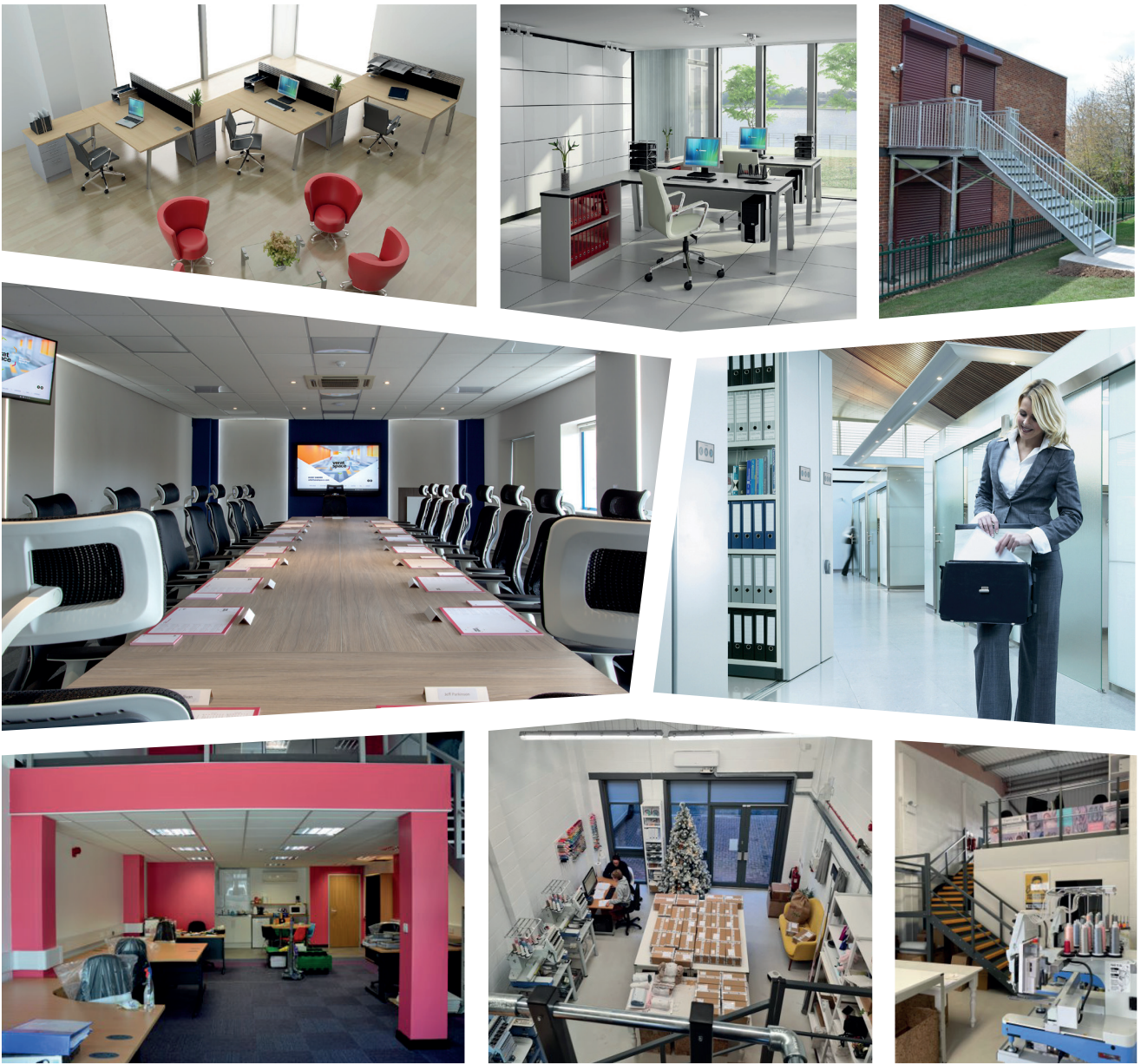
						
DOUBLE DEEP	DRIVE IN	PUSH BACK	PALLET LIVE	CARTON LIVE	SHUTTLE	CRANE
★★★★★	★★★★★	★★★★★	★★★★★	★★★★★	★★★★★	★★★★★
★★★★★	★★★★★	★★★★★	★★★★★	★★★★★	★★★★★	★★★★★
★★★★★	★★★★★	★★★★★	★★★★★	★★★★★	★★★★★	★★★★★
★★★★★	★★★★★	★★★★★	★★★★★	★★★★★	★★★★★	★★★★★
★★★★★	★★★★★	★★★★★	★★★★★	★★★★★	★★★★★	★★★★★
★★★★★	★★★★★	★★★★★	★★★★★	★★★★★	★★★★★	★★★★★
Required	Required	None	None	Hand Loaded	None	Crane
★★★★★	★★★★★	★★★★★	★★★★★	★★★★★	★★★★★	★★★★★
★★★★★	★★★★★	★★★★★	★★★★★	★★★★★	★★★★★	★★★★★
★★★★★	★★★★★	Not Required	Not required	n/a	★★★★★	n/a
Yes	n/a	n/a	n/a	n/a	n/a	n/a



Office Fit-outs and Refurbishments

We have a wide range of products and services to provide you with a work space optimised specifically for you.

From basic to opulent, all budgets catered for. Frameless glazed partitions, pre-decorated demountable walls and a full range of office furniture are all available. With office fit-outs, as with all projects we design, compliance is a key focus for us to ensure all elements meet relevant regulations. Our experts liaise closely with Building Control from the outset to avoid any problems later in the project.



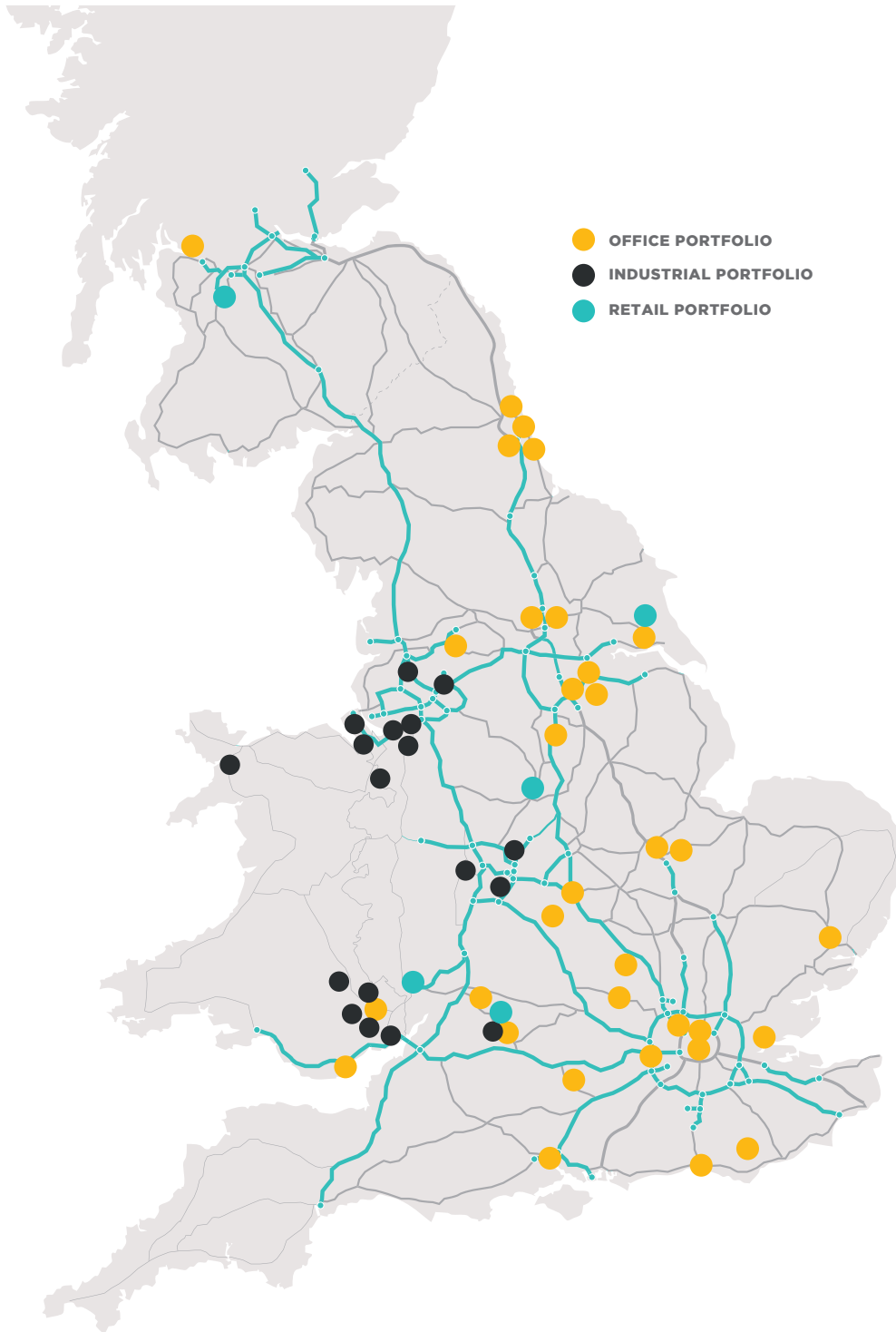
Warehouse storage configurations

The possibilities are endless to make your space work harder.

We can help you find the right combination to maximise both space and budget, no matter what your storage or manufacturing needs are.



0845 500 61 61
www.fi-rem.com



FI REAL ESTATE
MANAGEMENT

Canal Mill, Botany Brow, Chorley, Lancashire, PR6 9AF

☎ 01257 263010

✉ enquiries@fi-rem.com

🌐 www.fi-rem.com