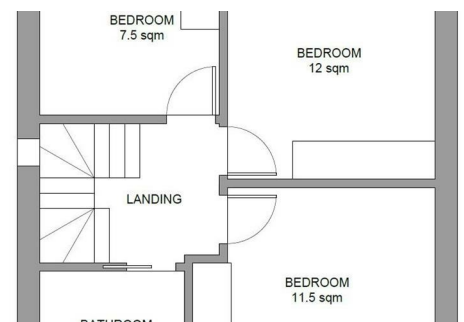
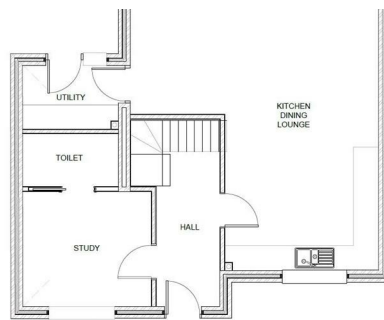




FORD & PARTNERS

ESTATE AGENTS



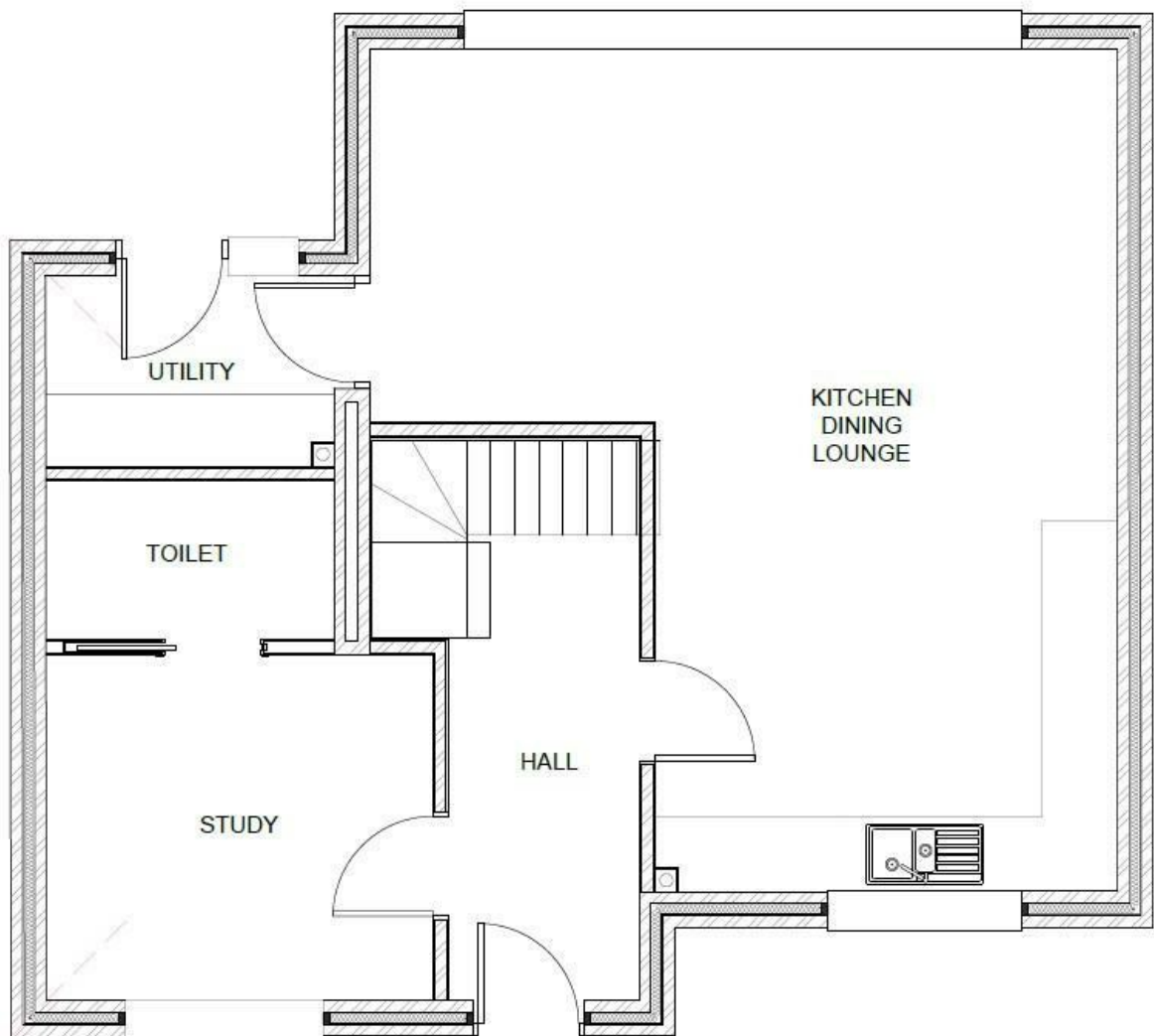
NEW BUILD, 57A Norwood Road, Loudwater, HP10 9UU

A four bedroom, three bathroom detached home currently under construction and due for completion in September 2025. Due to the stage of the build, any potential purchaser will have the option to choose floor coverings, wall colours and tiles.

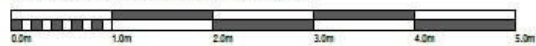
Please call our office to arrange a site visit or to find out further details.

- **New Build Detached Family Home**
- **Principal Bedroom with Ensuite Bathroom**
- **Open Plan Kitchen/Dining/Sitting Room with Bi-Folding Doors**
- **No Onward Chain**
- **Popular Loudwater Location**
- **Close to J3 of the M40**
- **Separate Utility Room**
- **Driveway Parking**
- **Images are CGI and are for guidance only**
- **Call Now for Further Details!**

£900,000



Ground Floor Plan - Scale 1:50



Energy Efficiency Rating

	Current	Potential
Very energy efficient - lower running costs		
(92 plus) A		
(81-91) B		
(69-80) C		
(55-68) D		
(39-54) E		
(21-38) F		
(1-20) G		
Not energy efficient - higher running costs		
England & Wales	EU Directive 2002/91/EC	

Environmental Impact (CO₂) Rating

	Current	Potential
Very environmentally friendly - lower CO ₂ emissions		
(92 plus) A		
(81-91) B		
(69-80) C		
(55-68) D		
(39-54) E		
(21-38) F		
(1-20) G		
Not environmentally friendly - higher CO ₂ emissions		
England & Wales	EU Directive 2002/91/EC	



18 Crendon Street, High Wycombe, HP13 6LS

Tel: 01494 840 600 Email: sales@fordandpartners.com www.fordandpartners.com