

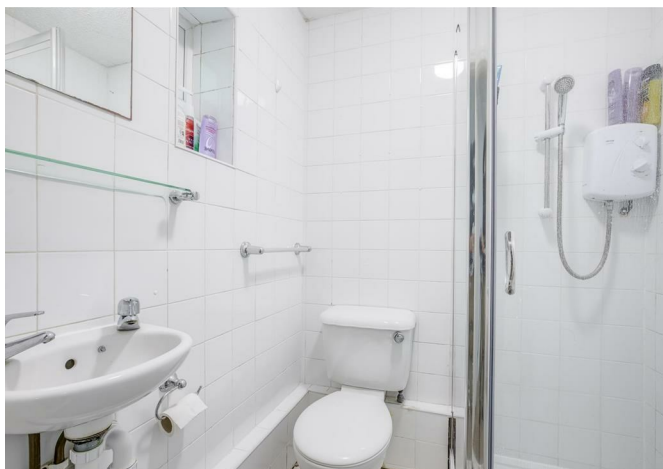


FORD & PARTNERS

— ESTATE AGENTS —



Redman Road High Wycombe Buckinghamshire HP12 4PH



Redman Road High Wycombe HP12 4PH

Guide price £450,000

A spacious four bedroom semi-detached home situated close to popular schooling and J4 M40. This fine home is available to purchase with vacant possession or with tenants in situ.

Description

Upon entering the property through the front door, you're greeted by a welcoming porch—ideal for storing coats and shoes. Straight ahead, the central hallway provides access to a convenient cloakroom on the right and a beautifully refitted kitchen on the left. The kitchen features a range of integrated appliances, a stylish breakfast bar, and ample fitted cabinetry, making it both functional and inviting.

From the kitchen you can access the spacious reception room and a versatile fourth bedroom which has an en-suite shower room and walk in dressing room, this is perfect for guests or can alternatively be used as an office.

Upstairs, the first floor offers three well-proportioned bedrooms along with a recently refurbished, high-spec family bathroom designed with comfort and luxury in mind.

Outside, the rear garden has been thoughtfully landscaped into a serene, low-maintenance space, complete with new paving, artificial lawn, and direct access to the driveway, which provides off-road parking for two vehicles.



Situation

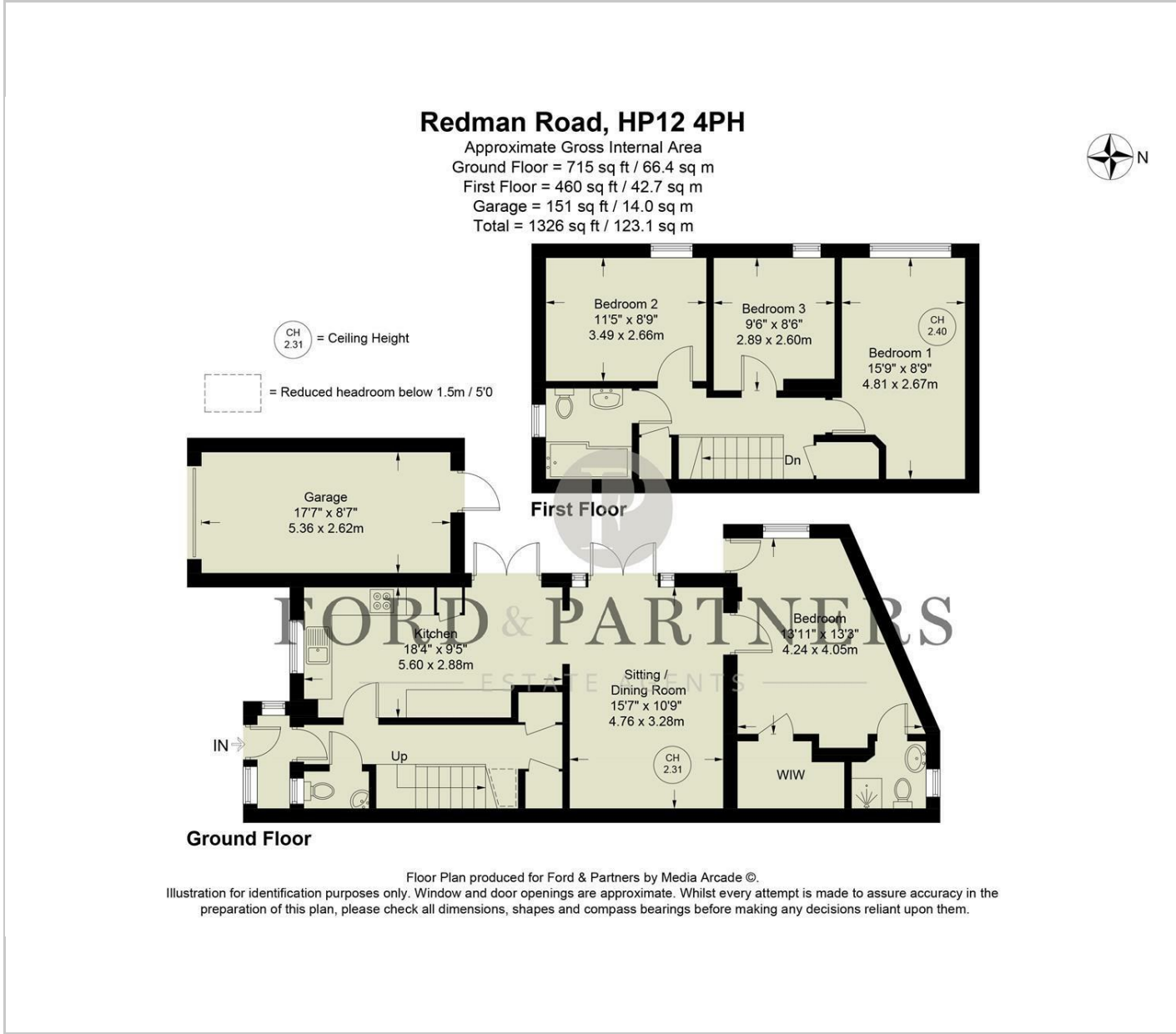
Redman Road is a prime location for the fantastic schooling High Wycombe offers, all walkable from the property you have John Hampden Grammar School for Boys, Wycombe High Grammar School for Girls, Chepping View Primary School, Wycombe Abbey School for Girl and many more.

The town provides an extensive range of shopping facilities, as well as a sports centre and multi-screen cinema complex. Surrounding the town is a selection of golf courses and other recreational amenities while a short drive finds the River Thames and the historic town of Marlow.

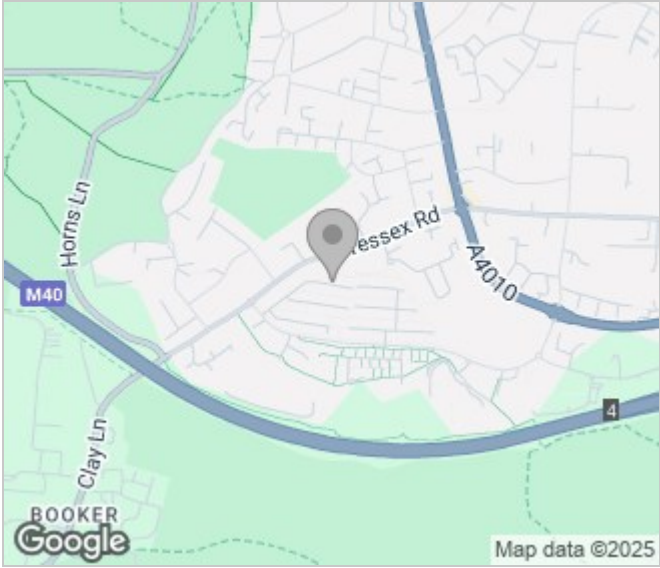
For the commuter there is a frequent rail service from High Wycombe to London Marylebone and the area also benefits from being close to the M40, providing links to the national motorway network including the M25 and easy access to Heathrow Airport.



Floor Plans



Area Map



Energy Performance Graph

