



FORD & PARTNERS

— ESTATE AGENTS —



Cock Lane High Wycombe HP13 7DF



Cock Lane High Wycombe HP13 7DH

£185,000

A recently refurbished and well presented ground floor apartment situated to the East of High Wycombe.

Description

A well presented and modernised ground floor apartment situated on the East side of High Wycombe town centre. The property consists of an open plan living/dining/kitchen area, spacious shower room and a double bedroom. The kitchen area includes a full size fridge freezer, washing machine, built in hob & oven as well as breakfast bar. The living area benefits from a private entrance directly onto a patio area.

The apartment comes with 1 allocated parking space along with several visitor parking bays. The property further benefits from full double glazing throughout, updated electrics and practical storage.

Situation

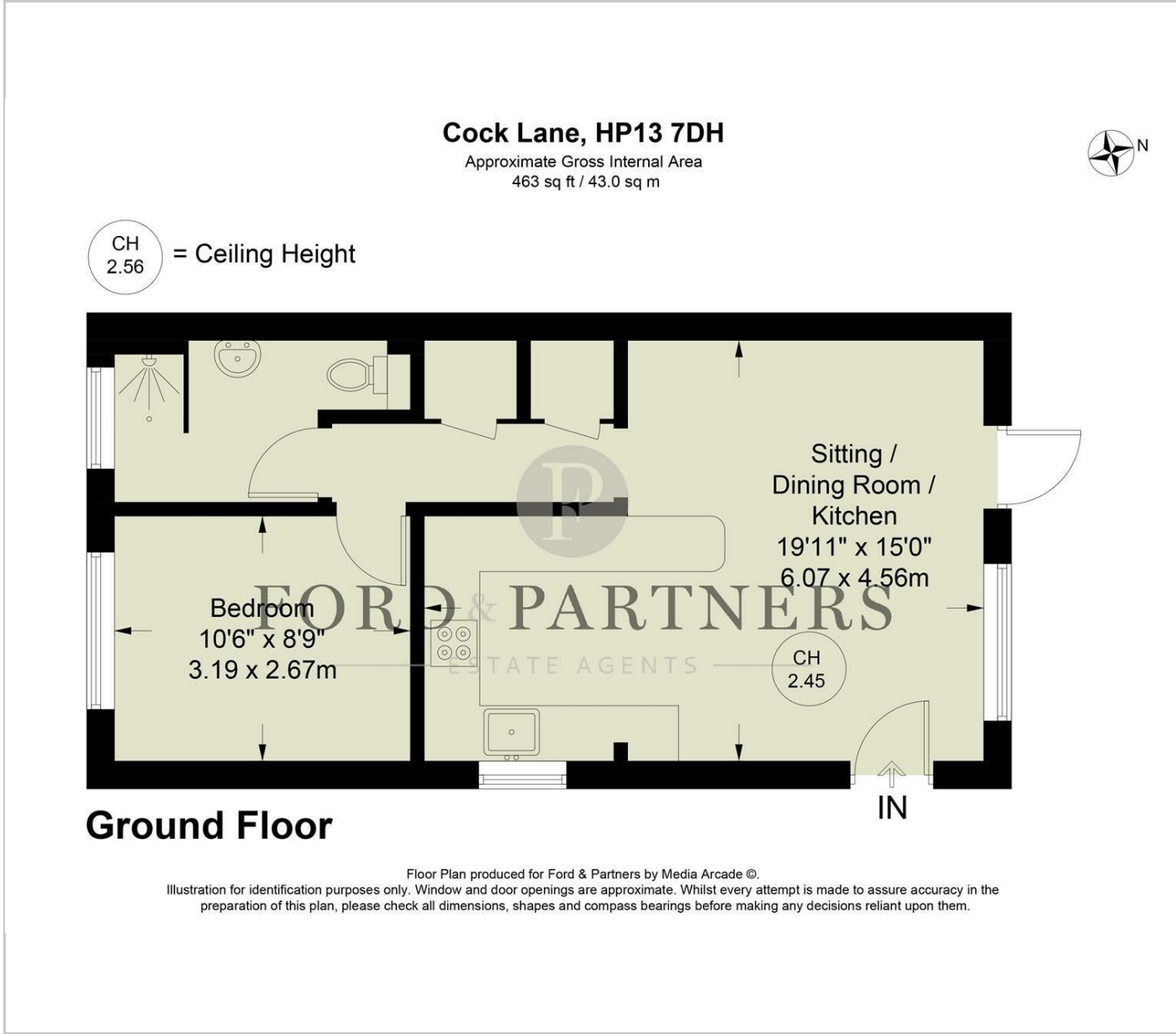
Rectory Court is located on the East side of High Wycombe town centre.

Cock Lane is close by to a variety of popular shopping facilities which include M&S simply food, Curry's PC World,, fitness gym, pharmacy and Hobby Craft.

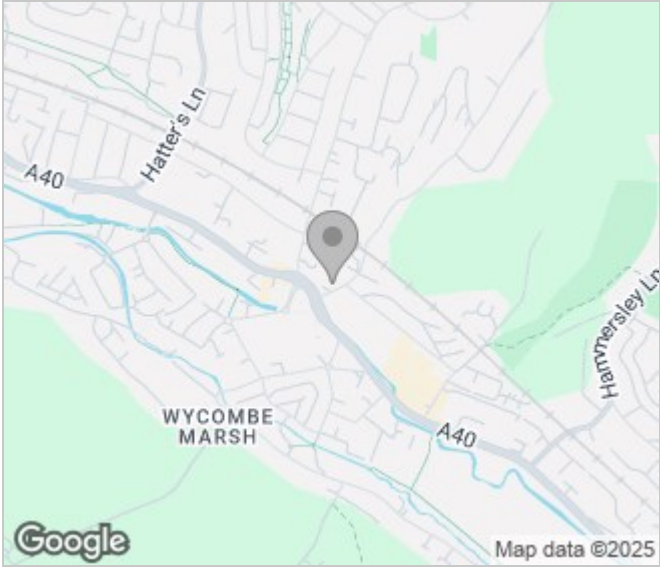
You can also conveniently access Junction 3&4 to the M40 providing easy access to both London & Oxford. For commuters High Wycombe Train Station is situated 1.5 miles away, with regular services to London Marylebone taking under 27 minutes. Wycombe Rye Lido & park are within walking distance just 1.1 miles away.



Floor Plans



Area Map



Energy Performance Graph

