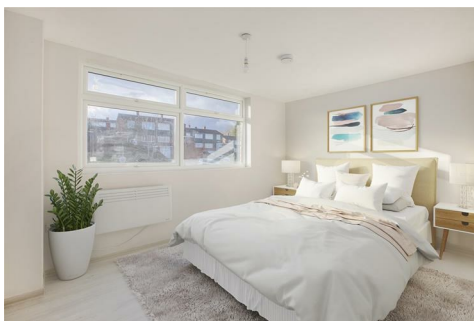




FORD & PARTNERS
— ESTATE AGENTS —



235 Chairborough Road, High Wycombe, HP12 3UL

RESERVE YOUR NEW HOME NOW - INCENTIVES AVAILABLE!

Ford & Partners are proud to bring to market a recently renovated first floor one-bedroom apartment situated in a purpose-built apartment building on the north-west side of High Wycombe's Town Centre.

The accommodation consists of one double bedroom, a bright and airy reception room, a stylish kitchen with appliances, modern family bathroom and storage.

Show Home Available to View Now - call now to avoid early disappointment.

(Apartment 235)

- **Only Two x One Bedroom Apartments Remaining!**
- **Appliances Included**
- **Refurbished Kitchen**
- **Refurnished Modern Bathroom**
- **Blinds Included**
- **Available Immediately**
- **Residents Parking**
- **Incentives Available - Call for Further Details!**

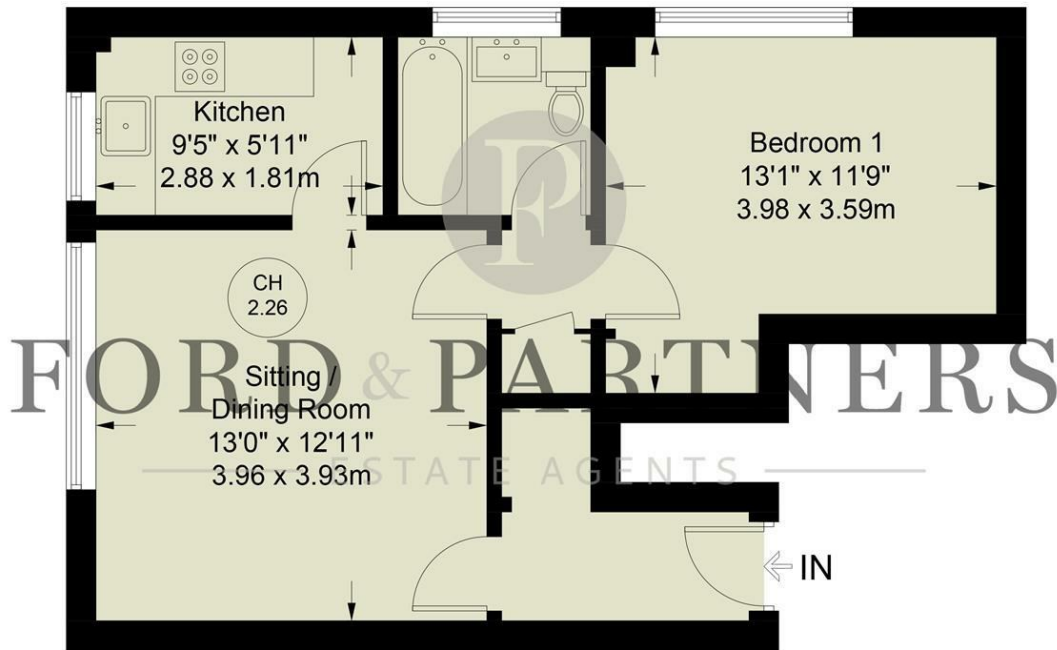
£1,200 Per month

Chairborough Road, HP12 3UL

Approximate Gross Internal Area = 476 sq ft / 44.2 sq m



CH
2.26 = Ceiling Height



Floor Plan produced for Ford & Partners by Media Arcade ©.

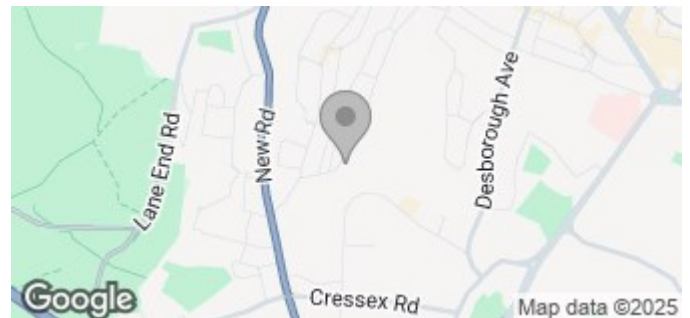
Illustration for identification purposes only. Window and door openings are approximate. Whilst every attempt is made to assure accuracy in the preparation of this plan, please check all dimensions, shapes and compass bearings before making any decisions reliant upon them.

Energy Efficiency Rating

	Current	Potential
Very energy efficient - lower running costs		
(92 plus) A		
(81-91) B		
(69-80) C		
(55-68) D		
(39-54) E		
(21-38) F		
(1-20) G		
Not energy efficient - higher running costs		
England & Wales	EU Directive 2002/91/EC	

Environmental Impact (CO₂) Rating

	Current	Potential
Very environmentally friendly - lower CO ₂ emissions		
(92 plus) A		
(81-91) B		
(69-80) C		
(55-68) D		
(39-54) E		
(21-38) F		
(1-20) G		
Not environmentally friendly - higher CO ₂ emissions		
England & Wales	EU Directive 2002/91/EC	



18 Crendon Street, High Wycombe, HP13 6LS

Tel: 01494 840 600 Email: sales@fordandpartners.com www.fordandpartners.com