



FORD & PARTNERS

— ESTATE AGENTS —

Kelvin Close High Wycombe Buckinghamshire HP13 5ST



Kelvin Close High Wycombe HP13 5ST

Offers over £425,000

A recently renovated three bedroom semi-detached home with stunning views and situated in a popular residential cul-de-sac.

Description

This beautifully presented home is arranged over two floors, with the garage conveniently located at driveway level. Step through the front door into a bright and welcoming hallway, where the staircase ascends to the first floor. To your left, a spacious dual-aspect sitting and dining room features a stylish tiled media wall with an electric fireplace, creating a cozy and contemporary ambiance. The sitting room offers stunning views over High Wycombe, while the dining area overlooks the recently landscaped rear garden.

The modern, recently refitted kitchen is thoughtfully designed with integrated appliances, including a double oven, fridge/freezer, and gas hob, making it a functional and stylish space for culinary enthusiasts.

Upstairs, the first floor hosts three well-appointed bedrooms—two generous doubles and a comfortable single. The front-facing bedrooms enjoy elevated views over High Wycombe, mirroring the picturesque outlook from the sitting room. Completing the upper level is a beautifully refurbished family bathroom, elegantly tiled from floor to ceiling for a luxurious finish.

Outside, the secluded rear garden is perfect for relaxation and entertaining. A newly laid patio provides an ideal space for outdoor dining, while a neatly maintained lawn adds a touch of greenery to this private retreat.

This charming home seamlessly combines modern style with everyday comfort, making it an excellent choice for those seeking a well-located and beautifully updated property.

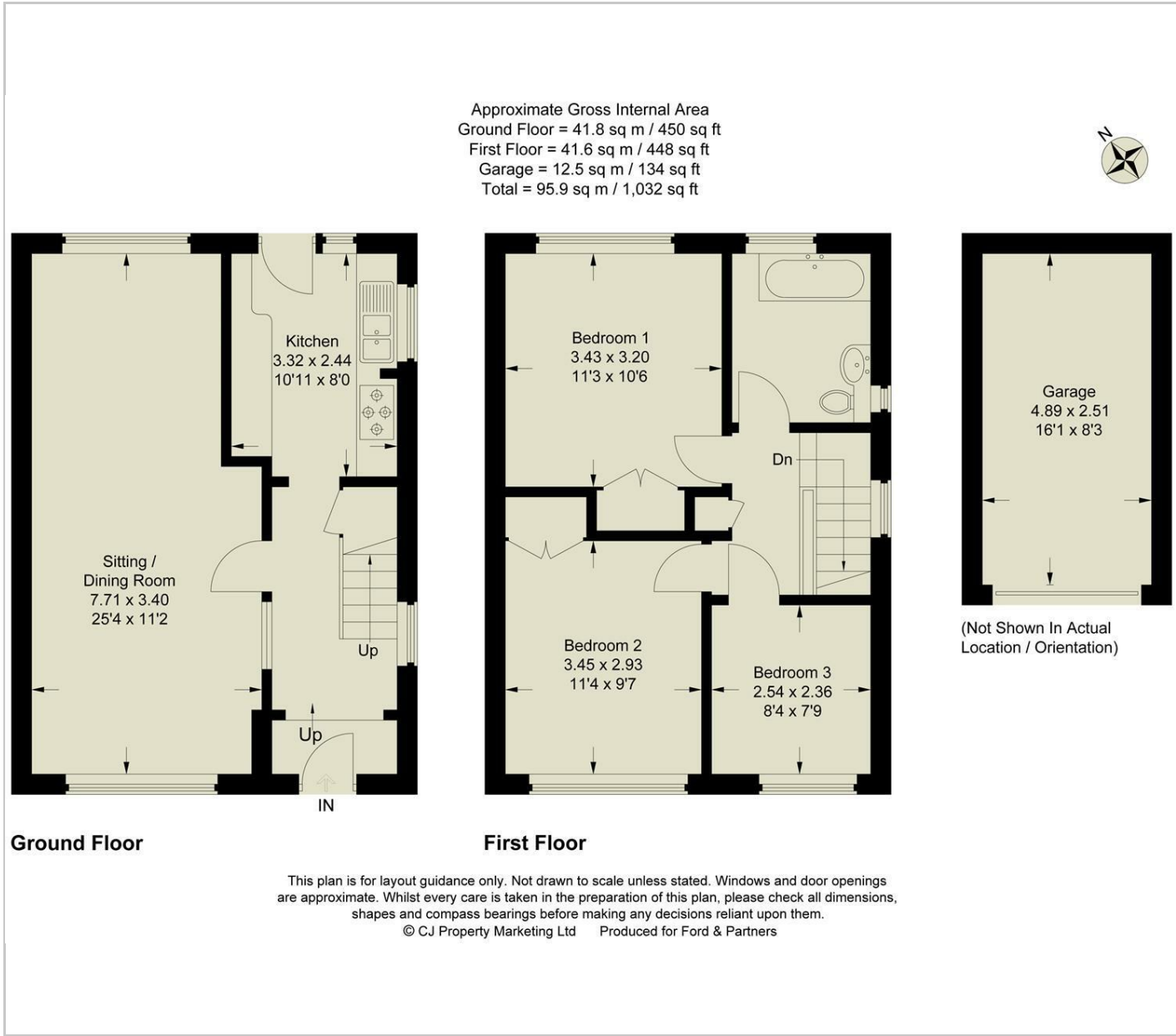


Situation

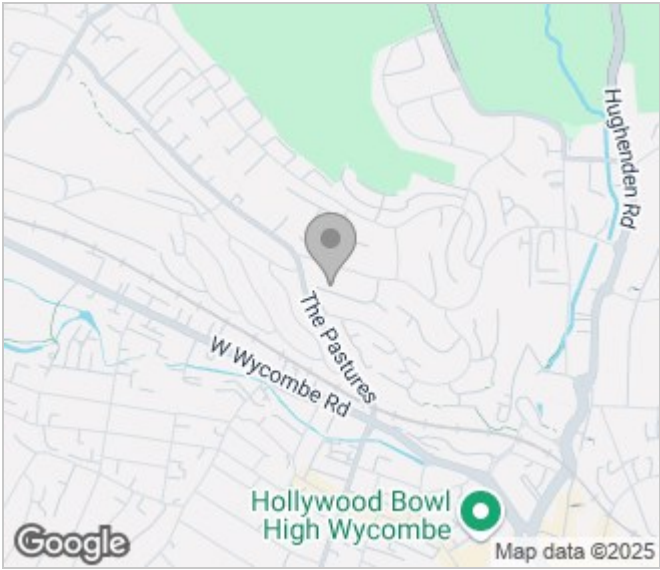
Kelvin Close is located toward to west side of High Wycombe's town centre. Walkable from the property there is Hughenden Park. The park consists of some 25 hectares of beautiful parkland trees and there are magnificent views across open countryside. It is the largest park in the Wycombe area. The Hughenden stream runs through the length of the park. The park borders Hughenden Manor, owned by the National Trust. The park is popular for walkers, picnics and dog walks.



Floor Plans



Area Map



Energy Performance Graph

