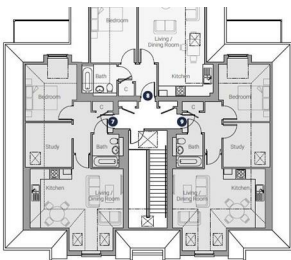




FORD & PARTNERS

ESTATE AGENTS



Second floor

Apartment 7
Kitchen/Living/Dining Room
8.80m x 8.00m - 29'2" x 26'3"

Apartment 8
Kitchen/Living/Dining Room
7.20m x 4.10m - 23'7" x 13'6"

Apartment 9
Kitchen/Living/Dining Room
8.80m x 8.00m - 29'2" x 26'3"



Thoughtfully planned with private parking for all

Altus occupies a large plot, allowing for the inclusion of a private reserved residents' garden to the rear and more than ample parking.



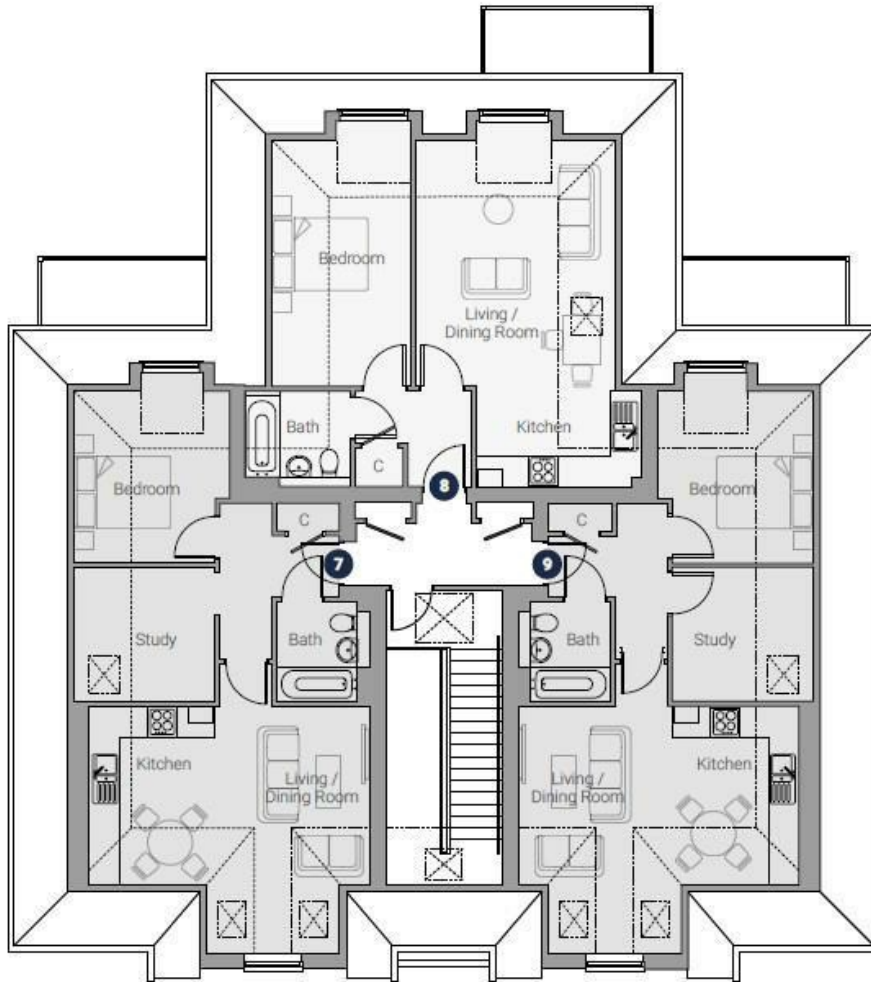
Altus, 9 132-134 New Road, High Wycombe, HP12 4LA

Altus | New Road | High Wycombe

An exclusive collection of just nine 1 & 2 bedroom apartments available to rent from £1250 per calendar month.

- **Nine 1 & 2 Bedroom Apartments available to Rent**
- **Show Apartment Available to View from 12th October - Call Now to Arrange Your Viewing**
- **Reserve your Home Today!**
- **Stainless Steel Oven, Gas Hob and integrated Extractor Hood**
- **Luxury Family Bathrooms & Ensuites**

£1,350 Per month



Second floor

Apartment 7

Kitchen/Living/Dining Room

5.82m x 5.20m 19'2" x 17'1"

Bedroom

3.57m x 3.21m 11'9" x 10'7"

Study

2.91m x 2.80m 9'7" x 9'2"

Apartment 8

Kitchen/Living/Dining Room

7.27m x 4.19m 23'7" x 13'8"

Bedroom

5.16m x 2.90m 16'9" x 9'5"

Apartment 9

Kitchen/Living/Dining Room

5.82m x 5.20m 19'2" x 17'1"

Bedroom

3.57m x 3.21m 11'9" x 10'7"

Study

2.91m x 2.80m 9'7" x 9'2"

ES - Ensuite C - Cupboard

All room dimensions are subject to a +/- 76mm (3") tolerance. Kitchen layouts are indicative only. Please consult the Sales Advisor for specific elevations, room dimensions and kitchen layouts. This information is for guidance only and does not form any part of any contract or constitute a warranty.

Energy Efficiency Rating

	Current	Potential
Very energy efficient - lower running costs		
(92 plus) A		
(81-91) B		
(69-80) C		
(55-68) D		
(39-54) E		
(21-38) F		
(1-20) G		
Not energy efficient - higher running costs		
England & Wales	EU Directive 2002/91/EC	

Environmental Impact (CO₂) Rating

	Current	Potential
Very environmentally friendly - lower CO ₂ emissions		
(92 plus) A		
(81-91) B		
(69-80) C		
(55-68) D		
(39-54) E		
(21-38) F		
(1-20) G		
Not environmentally friendly - higher CO ₂ emissions		
England & Wales	EU Directive 2002/91/EC	

