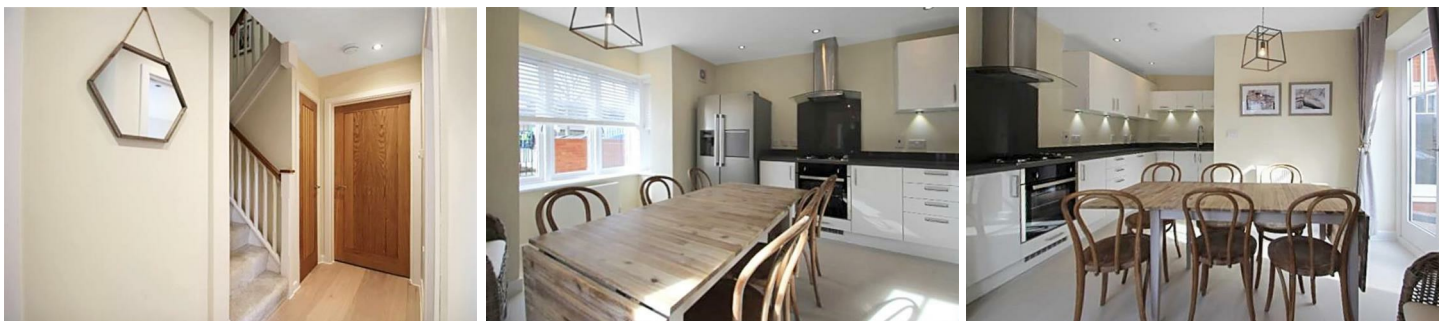




FORD & PARTNERS

ESTATE AGENTS



Room 4 Town Lane, Marlow, SL7 2FP

IDEAL FOR YOUNG PROFESSIONALS (let out room by room)

A very bright and airy top floor en-suite bedroom in the heart of Marlow Town Centre.

A spacious 4 bedroom house with each room having its own en-suite. Professional house share, less than 50 yards from Marlow High Street (just to the side of Sainsbury's supermarket).

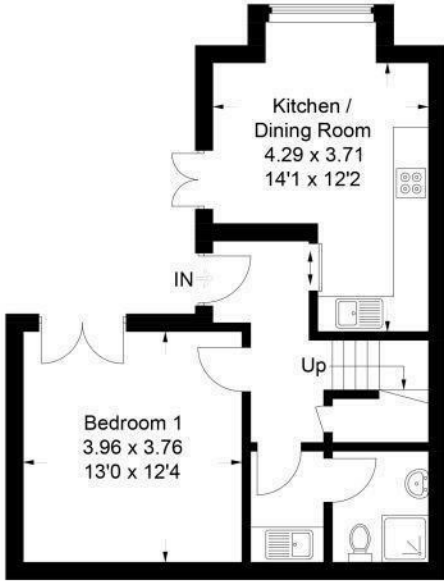
Marlow enjoys excellent access to the national motorway network due to its proximity to the A404 which connects directly to both the M40 & M4.

Rail services to London Paddington run from Marlow via Bourne End and Maidenhead, the latter offering fast trains from 23 minutes.

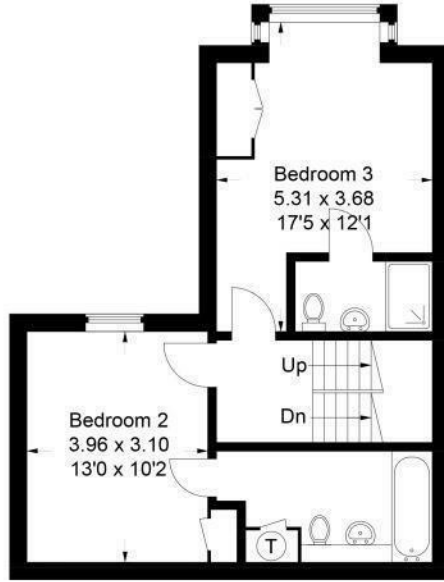
- **One Bedroom House Share**
- **Central Marlow**
- **Bills Included**
- **Parking Space**
- **Available from 2nd July 2024**
- **Modern House**
- **Ensuite**
- **Ideal for Young Professionals**
- **Double Bedroom**
- **Furnished**

£1,000 Per month

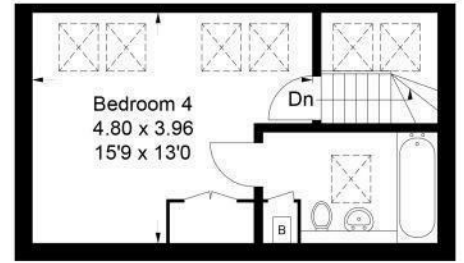
Approximate Gross Internal Area
 Ground Floor = 46.3 sq m / 498 sq ft
 First Floor = 45.8 sq m / 493 sq ft
 Second Floor = 27.4 sq m / 295 sq ft
 Total = 119.5 sq m / 1286 sq ft



Ground Floor



First Floor



Second Floor

This plan is for layout guidance only. Not drawn to scale unless stated. Windows and door openings are approximate. Whilst every care is taken in the preparation of this plan, please check all dimensions, shapes and compass bearings before making any decisions reliant upon them.
 © CJ Property Marketing Ltd

Energy Efficiency Rating		
	Current	Potential
Very energy efficient - lower running costs		
(92 plus) A		
(81-91) B		
(69-80) C		
(55-68) D		
(39-54) E		
(21-38) F		
(1-20) G		
Not energy efficient - higher running costs		
England & Wales	EU Directive 2002/91/EC	

Environmental Impact (CO ₂) Rating		
	Current	Potential
Very environmentally friendly - lower CO ₂ emissions		
(92 plus) A		
(81-91) B		
(69-80) C		
(55-68) D		
(39-54) E		
(21-38) F		
(1-20) G		
Not environmentally friendly - higher CO ₂ emissions		
England & Wales	EU Directive 2002/91/EC	

