



FORD & PARTNERS

ESTATE AGENTS



26 Westfield House London Road, High Wycombe, Buckinghamshire, HP11 1HA



26 Westfield House London Road, High Wycombe,
Buckinghamshire, HP11 1HA

Guide price £275,000

A large two double bedroom modern apartment with far reaching views
across the Kingsmead Park and the neighbouring countryside.

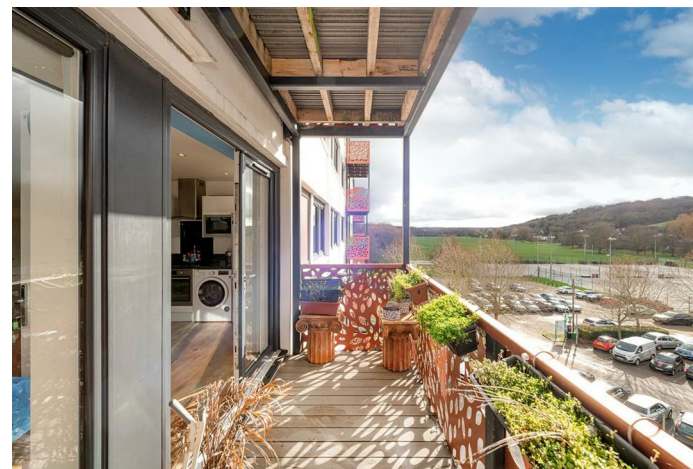
Description

The apartments accommodation consists of two double bedrooms, a family bathroom and an open plan kitchen/diner/sitting room. The apartment is located on the south facing aspect of the building, with large UPVC windows flooding the apartment with natural light - the open plan space also benefits from a dual aspect.

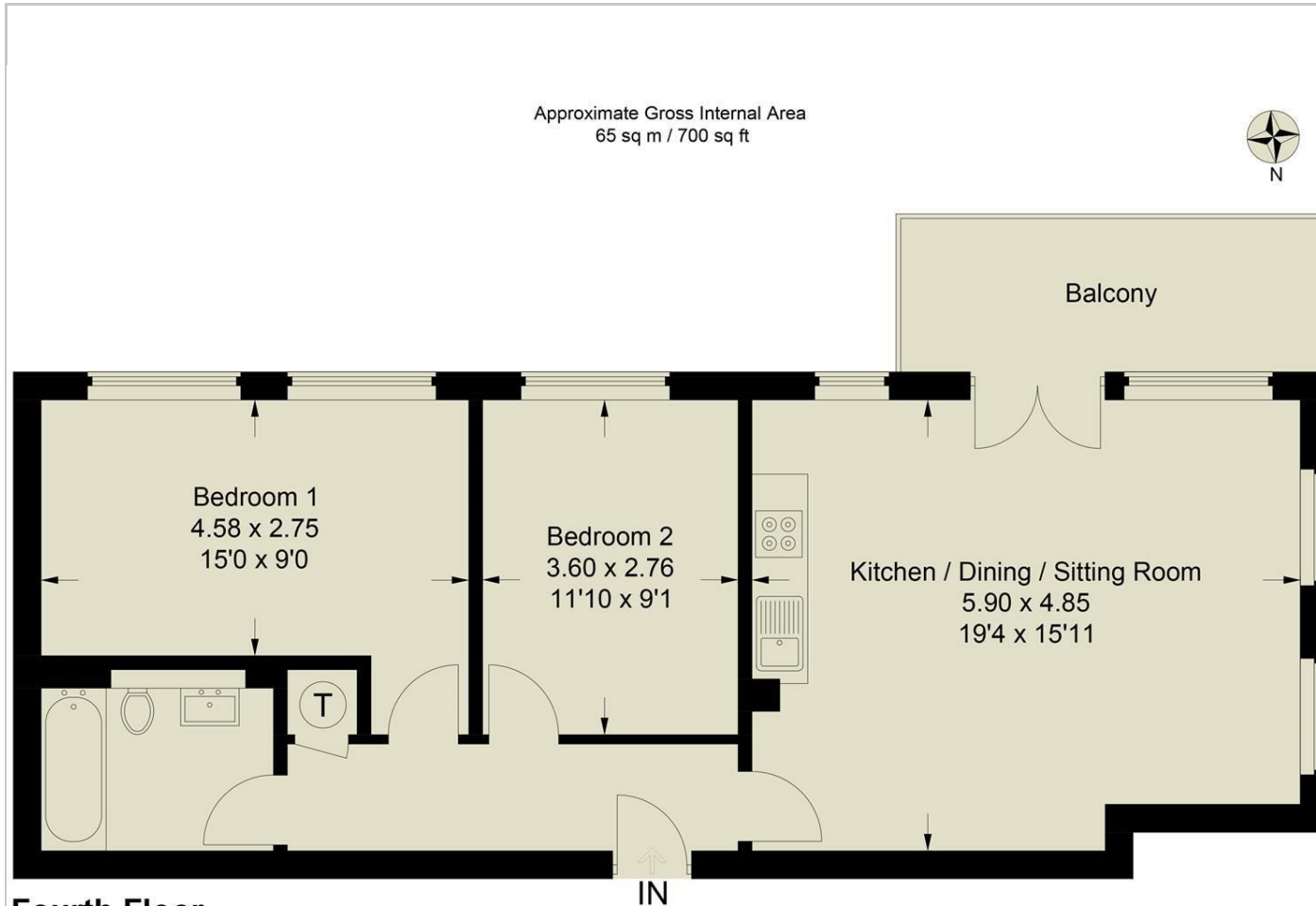
Further features include central heating, allocated parking, visitor parking, large south-facing balcony and an elevator.

Situation

Westfields House is located on the London Road, East of High Wycombe's Town Centre. The Retail Park is a short walk away where you have a large M&S Food Hall, Pizza Hut, Wikes and many other amenities more. Wycombe is a combination of industrial and market town, with a rich history and traditional emphasis on furniture production. Wycombe benefits from two motorway junctions of the M40 and the reliable Chiltern Railway service where you can be in London Marylebone Station in 27 minutes.

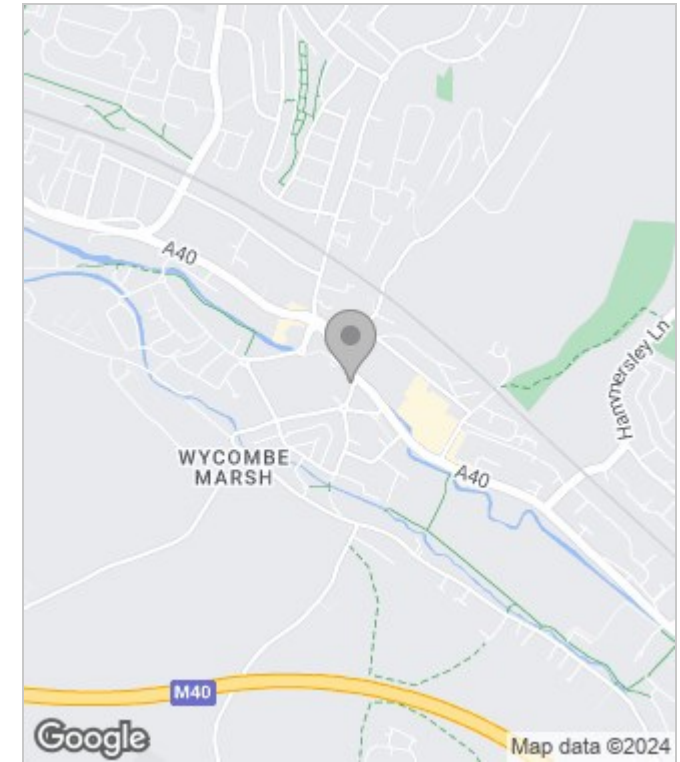


Floor Plans



This plan is for layout guidance only. Not drawn to scale unless stated. Windows and door openings are approximate. Whilst every care is taken in the preparation of this plan, please check all dimensions, shapes and compass bearings before making any decisions reliant upon them.
© CJ Property Marketing Ltd Produced for Ford & Partners

Area Map



Energy Performance Graph

