



Keswick

Offers in the region of **£259,000**

14 High Hill, Keswick, Cumbria, CA12 5NY

A self-contained two bedroom first floor apartment most conveniently situated within easy walking distance to Keswick town centre.

Quick Overview

Self-contained first floor apartment
Easy walking distance to Keswick town centre

Front and rear fell views

Two double bedrooms and luxury shower room

Living room and fitted dining kitchen

External decked entertaining terrace

Allocated covered parking space

Ideal second home or for lucrative holiday letting



2



1



1



D



Superfast
80 Mbps



1

Property Reference: KW0300



Living Room



Living Room



Dining Kitchen



Dining Kitchen

Enjoying fell views to the front and rear this immaculately presented apartment is ideally suitable as a recreational second home or for lucrative holiday letting.

Accommodation

Ground Floor:

External stairway leading to

First Floor:

External Decked Terrace 8' 10" x 8' 7"
(2.69m x 2.62m)

Self-Contained Entrance Hall

Dining Kitchen 12' 7" x 10' 2" (3.84m x 3.1m)

With fitted base units, sink with mixer tap, ceramic wall tiling, integrated oven, hob, plumbing for washing machine, radiator, built in cupboard with gas boiler.

Inner Hall

With radiator, built in cupboard.

Living Room 11' 8" x 10' 6" (3.56m x 3.2m)
With electric fire, radiator.

Bedroom One 15' 4" x 11' 5" (4.67m x 3.48m)

With radiator, built in cupboard.

Bedroom Two 15' 5" x 7' 6" (4.7m x 2.29m)
With radiator, built in cupboard.

Shower Room

With WC, vanity wash hand basin, shower cubicle, ceramic wall tiling, heated towel rail.

Outside:

Allocated covered parking space.

Services

Mains water, electricity, gas and drainage.
Gas central heating.

Tenure

999 year lease.

Rateable Value

£2,400.

Viewing

By appointment with Hackney and Leigh's Keswick office.

Directions

From Main Street in Keswick town centre proceed onto High Hill and the property is located in the row of dwellings on the left after passing the entrance to the Derwent Pencil Museum. The rear access staircase to the property is approached at the rear of the building by turning left into the access lane immediately beside number 12 High Hill.

Price

Offers in the region of £259,000.



Bedroom One



Bedroom Two



View

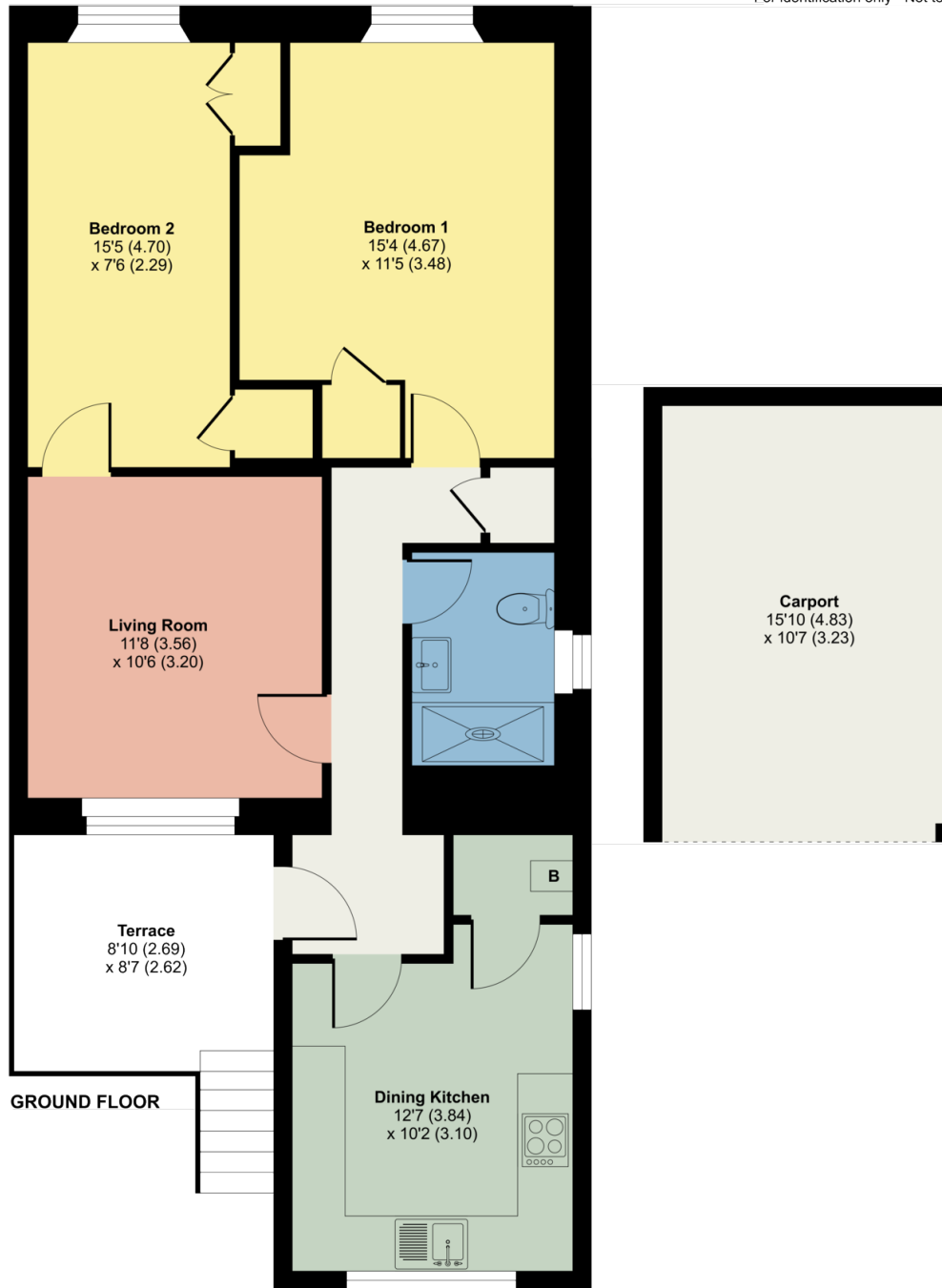


Carport

14 High Hill, Keswick

Approximate Area = 697 sq ft / 64.7 sq m (excludes carport)

For identification only - Not to scale



Floor plan produced in accordance with RICS Property Measurement Standards incorporating International Property Measurement Standards (IPMS2 Residential). © n/checon 2023. Produced for Hackney & Leigh. REF: 1043020

All permits to view and particulars are issued on the understanding that negotiations are conducted through the agency of Messrs. Hackney & Leigh Ltd. Properties for sale by private treaty are offered subject to contract. No responsibility can be accepted for any loss or expense incurred in viewing or in the event of a property being sold, let, or withdrawn. Please contact us to confirm availability prior to travel. These particulars have been prepared for the guidance of intending buyers. No guarantee of their accuracy is given, nor do they form part of a contract. *Broadband speeds estimated and checked by <https://checker.ofcom.org.uk/en-gb/broadband-coverage> on 11/10/2023.

Request a Viewing Online or Call 01768 741741