

Grange

Offers in the region of £475,000

How Cottage, Grange, Keswick, CA12 5UQ

A most appealing three bedroom period terrace cottage enjoying stunning surrounding fell views and an idyllic rural Lakeland setting in the centre of the picturesque Grange village nestling within the spectacular Borrowdale Valley approximately five miles south of Keswick.

The property is equally suitable as a primary home, recreational second home or for continuing its existing successfully established holiday letting use.

Grange village amenities include a Church, licensed cafe, hotel, museum and regular bus services.

Quick Overview

Most appealing period terrace cottage
Idyllic Borrowdale Valley setting
Central location within picturesque
Grange village
Overlooking the village green
Stunning surrounding Lakeland fell views
Five miles from Keswick
Three bedrooms
Living room and fitted dining kitchen
Forecourt garden
Ideal second home or for continued
lucrative holiday letting use



3



1



1



E



Superfast
80Mbps



On Road

Property Reference: KW0389



Living Room



Dining Kitchen



Bedroom One



Bedroom Two

Accommodation

Ground Floor:

Entrance Hall

With under stairs cupboard.

WC

With WC, wash hand basin, ceramic wall tiling.

Living Room

With multi fuel stove on slate hearth, electric heater.

Dining Kitchen

With fitted base and wall units, sink unit with mixer tap, ceramic wall tiling, integrated oven, hob, plumbing for washing machine and dish washer, electric heater.

First Floor:

Landing

Bedroom One

Rear bedroom with electric heater.

Bedroom Two

Front bedroom with electric heater.

Bedroom Three

Front bedroom with electric heater.

Bathroom

With WC, wash hand basin, bath with shower over, heated towel rail, ceramic wall tiling.

Outside:

Front paved forecourt garden, shed.

Services

Mains water, electricity and drainage. Electric heating.

Tenure

Freehold.

Rateable Value

£2,850.

Viewing

By appointment with Hackney and Leigh's Keswick office.

Directions

Entering into Keswick town centre from High Hill proceed onto Main Street and turn right at the mini round about opposite the Cooperative food store and then bear left onto Heads Road. Continue across the mini roundabout onto the B5289 towards Borrowdale. Proceed and turn right where sign posted for Grange following the road across the bridge and then bearing left. The property is situated within the row of houses on the left by the green.

Price

Offers in the region of £475,000.



Living Room

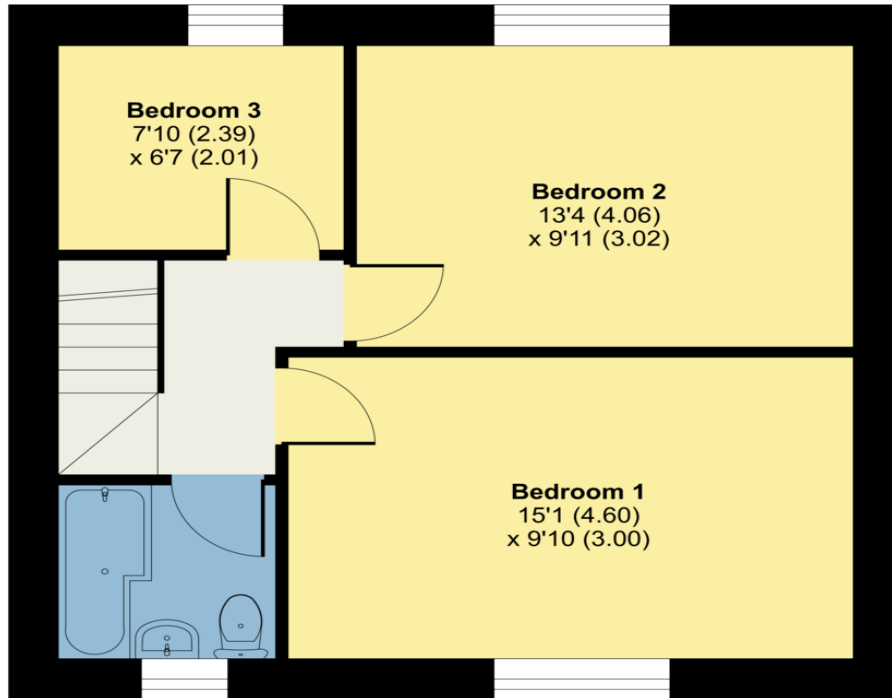


Kitchen

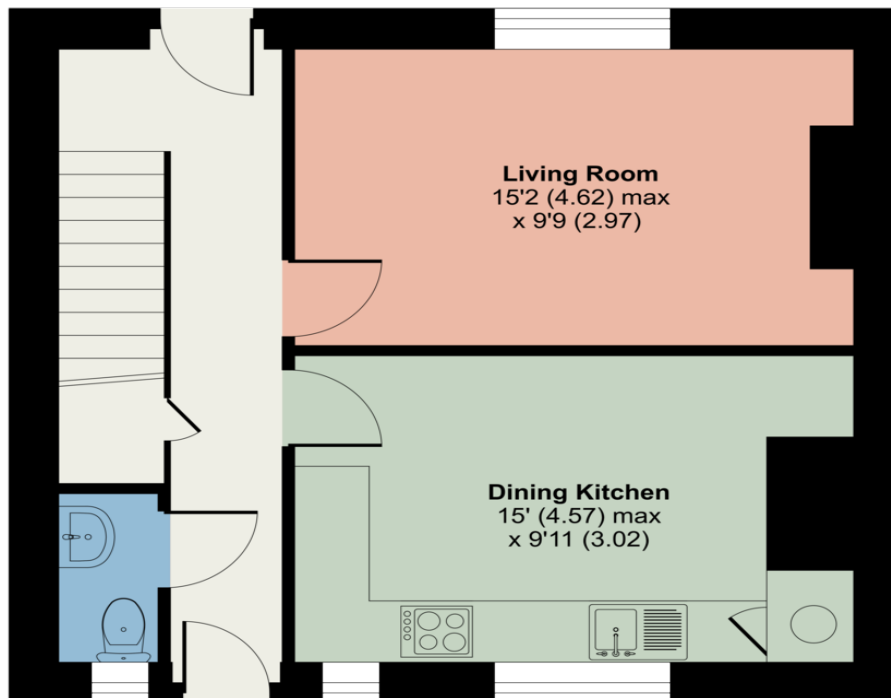
How Cottage, Grange, Keswick

Approximate Area = 854 sq ft / 79.3 sq m

For identification only - Not to scale



FIRST FLOOR



GROUND FLOOR



Floor plan produced in accordance with RICS Property Measurement Standards incorporating International Property Measurement Standards (IPMS2 Residential). © nichecom 2024. Produced for Hackney & Leigh. REF: 1180400

All permits to view and particulars are issued on the understanding that negotiations are conducted through the agency of Messrs. Hackney & Leigh Ltd. Properties for sale by private treaty are offered subject to contract. No responsibility can be accepted for any loss or expense incurred in viewing or in the event of a property being sold, let, or withdrawn. Please contact us to confirm availability prior to travel. These particulars have been prepared for the guidance of intending buyers. No guarantee of their accuracy is given, nor do they form part of a contract. *Broadband speeds estimated and checked by <https://checker.ofcom.gov.uk/en-gb/broadband-coverage> on 07/09/2024.

Request a Viewing Online or Call 01768 741741