

Keswick

Offers in the region of **£340,000**

52 Wordsworth Street, Keswick, Cumbria, CA12 4BZ

A three bedroom period terrace house most conveniently situated on a pleasant side street close to Keswick town centre. Upgrading of the accommodation is required.

Quick Overview

Convenient side street location close to Keswick town centre

Three bedrooms

Living room and sitting room

Forecourt and rear courtyard

Upgrading of the accommodation required



3



1



2



D



Superfast
80Mbps



On Street

Property Reference: KW0345



Living Room



Sitting Room



Kitchen



Bedroom One

Accommodation

Ground Floor:

Entrance Hall

With radiator.

Living Room 12' 7" x 11' 5" max (3.84m x 3.48m)

With fitted gas fire, radiator.

Sitting Room 12' 7" x 11' 9" max (3.84m x 3.58m)

With fitted gas fire, radiator, built in cupboard, under stairs cupboard.

Kitchen 10' 0" x 6' 2" (3.05m x 1.88m)

With fitted base and wall units, sink with mixer tap, external door.

First Floor:

Landing

Bedroom One 12' 2" x 8' 11" (3.71m x 2.72m)

With radiator, built in wardrobe, period fireplace.

Bedroom Two 12' 7" x 8' 0" max (3.84m x 2.44m)

With radiator.

Bedroom Three 14' 0" max x 6' 8" (4.27m x 2.03m)

With radiator.

Bathroom

With WC, wash hand basin, bath with shower over, ceramic wall tiling, radiator, built in airing cupboard.

Outside:

Front forecourt, rear yard with pedestrian access and external store.

Services

Mains water, electricity, gas and drainage. Gas central heating.

Tenure

Freehold.

Council Tax

Band D.

Viewing

By appointment with Hackney and Leigh's Keswick office.

Directions

From Keswick town centre proceed onto Penrith Road then turn right immediately after Greta Street onto Wordsworth Street.

Price

Offers in the region of £340,000 are invited for consideration.



Sitting Room



Living Room

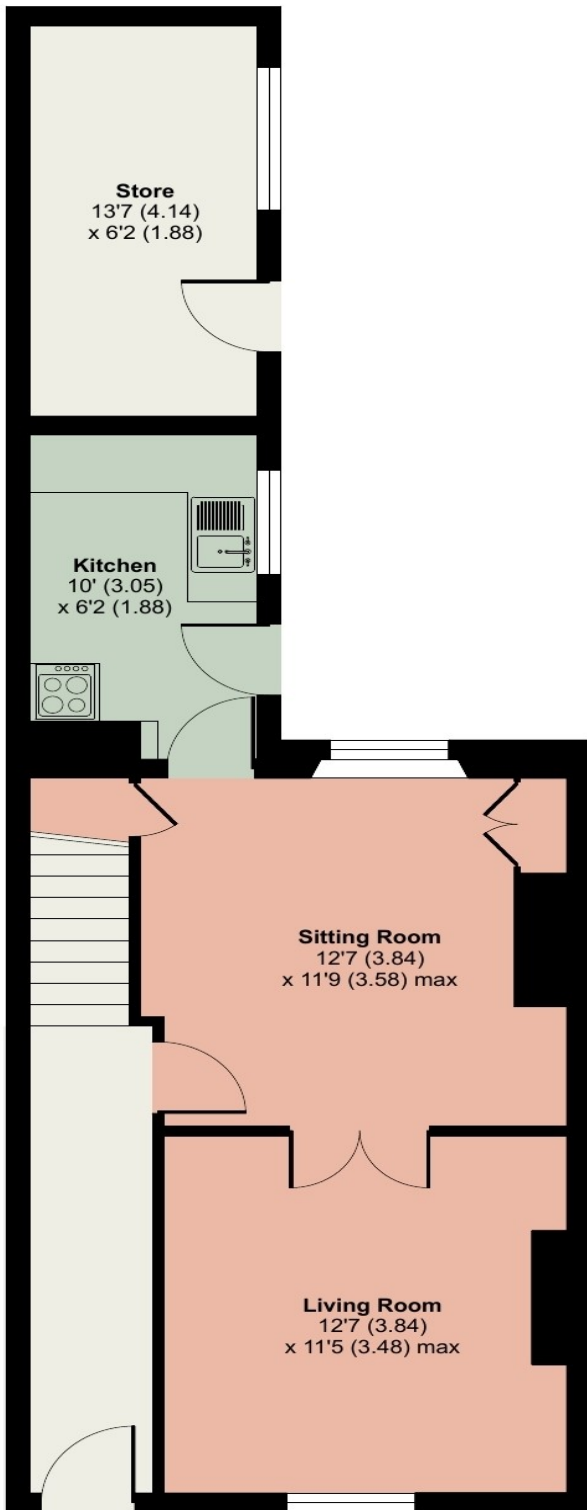
52 Wordsworth Street, Keswick

Approximate Area = 928 sq ft / 86.2 sq m

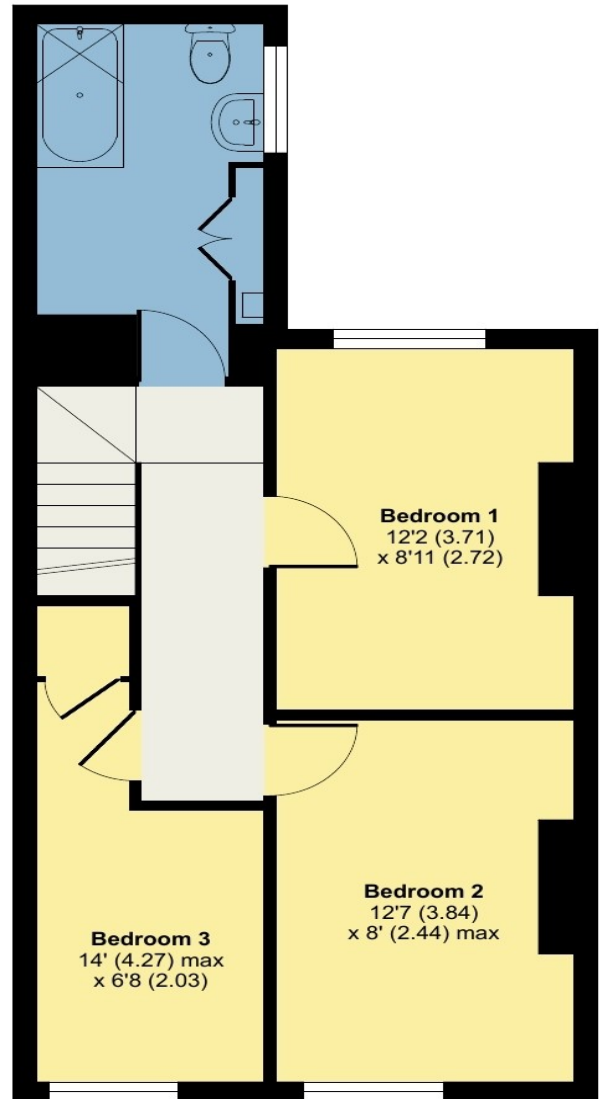
Outbuilding = 89 sq ft / 8.2 sq m

Total = 1017 sq ft / 94.4 sq m

For identification only - Not to scale



GROUND FLOOR



FIRST FLOOR



Floor plan produced in accordance with RICS Property Measurement Standards incorporating International Property Measurement Standards (IPMS2 Residential). © n̄checom 2024. Produced for Hackney & Leigh. REF: 1108506

All permits to view and particulars are issued on the understanding that negotiations are conducted through the agency of Messrs. Hackney & Leigh Ltd. Properties for sale by private treaty are offered subject to contract. No responsibility can be accepted for any loss or expense incurred in viewing or in the event of a property being sold, let, or withdrawn. Please contact us to confirm availability prior to travel. These particulars have been prepared for the guidance of intending buyers. No guarantee of their accuracy is given, nor do they form part of a contract. *Broadband speeds estimated and checked by <https://checker.ofcom.org.uk/en-gb/broadband-coverage> on 09/04/2024.

Request a Viewing Online or Call 01768 741741