

# 3 Bedroom End Terrace Villa

## 82 MEIKLELAUGHT PLACE, SALTCOATS



- Desirable Location
- Walk In Condition
- Quiet Estate
- Private Rear Garden
- Monobloc Driveway
- Modern Family Home

Offers Over: £

Tel. 01294 466800  
[info@welcomehomesayrshire.co.uk](mailto:info@welcomehomesayrshire.co.uk)





Welcome Homes is proud to bring to the market this stunning modern villa in a sought after location.

The property is presented in walk-in condition with thoughtfully designed bright living spaces and exceptional contemporary finishings throughout.

The accommodation over two levels comprises on the ground floor a welcoming entrance hallway, a modern lounge with a stunning media wall, and a generous kitchen diner completed with stylish fitted kitchen, integrated appliances and wine cooler, a pantry cupboard and space for dining beside French doors opening to the rear garden. A carpeted staircase from the hallway leads to the first floor landing which has cupboard space, 3 bedrooms all with integrated storage and an exquisite family shower room.

Externally the property benefits from a private rear garden which has a monobloc patio, summer house and gated access to the front of the property which has a driveway for private parking.

---

Meiklelaught Place is a desirable private estate convenient for transport links, schools and local amenities. No.82 is a truly beautiful property which would be ideally suited to families looking for a modern home in ready to move in condition.

Viewing advised.

## 82 Meiklelaught Place, Saltcoats

**Offers Over £**























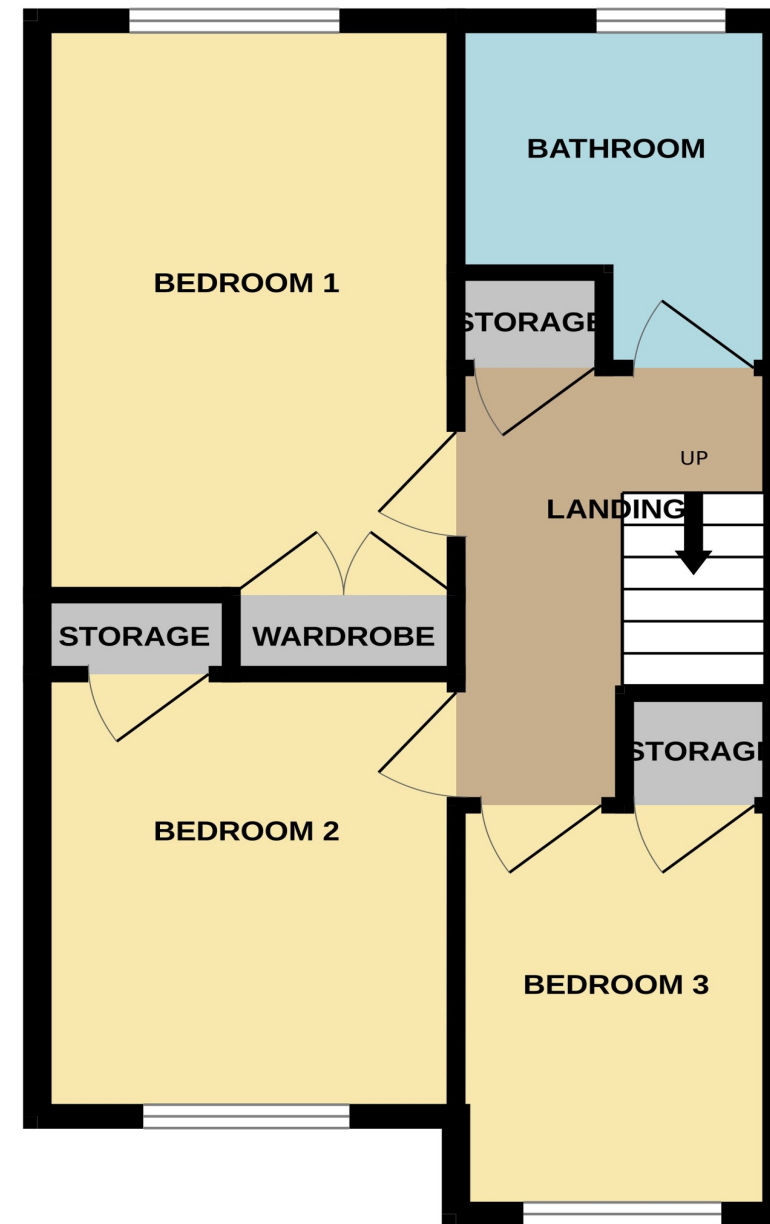
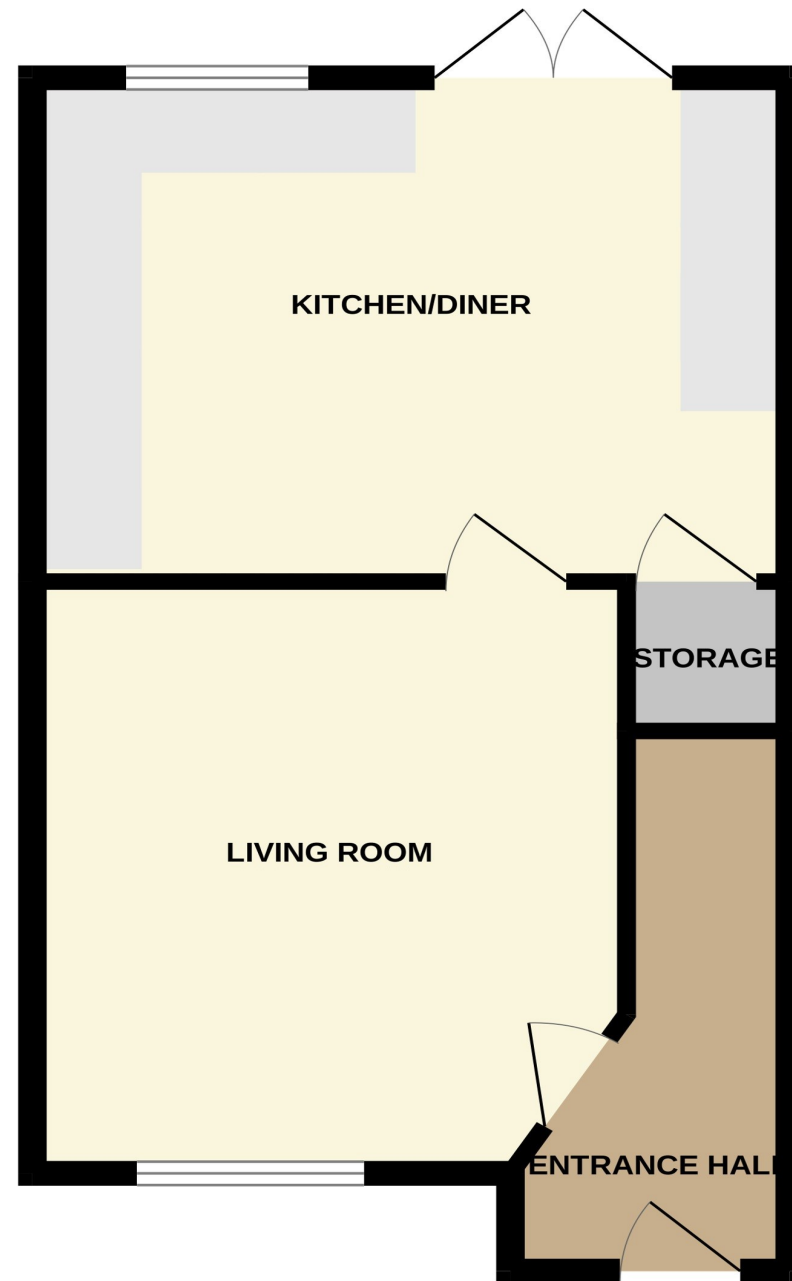












Whilst every attempt has been made to ensure the accuracy of the floorplan contained here, measurements of doors, windows, rooms and any other items are approximate and no responsibility is taken for any error, omission or mis-statement. This plan is for illustrative purposes only and should be used as such by any prospective purchaser. The services, systems and appliances shown have not been tested and no guarantee as to their operability or efficiency can be given.  
 Made with Metropix ©2023





















































82 Meiklelaught Place, Saltcoats

Offers Over £

#### DIMENSIONS:-

Lounge:	4.30 x 3.75 m
Kitchen Diner:	4.78 x 3.66 m
Bedroom 1:	4.17 x 2.65 m
Bedroom 2:	3.18 x 2.66 m
Bedroom 3:	2.80 x 2.05 m
Bathroom:	2.50 x 2.03 m

#### COUNCIL TAX BAND D

#### Extras:-

All carpets and fitted flooring; all blinds; all light fittings and fixtures; all integrated appliances; the garden summer house.

All measurements contained within this Brochure are from the widest points. Whilst every attempt has been made to ensure the accuracy of the floorplan contained herein, measurements are approximate and no responsibility is taken for any error, omission or mis-statement. The floorplan and measurements are for illustrative purposes only and should be used as such by any prospective purchaser. The services, systems and appliances shown have not been tested and no guarantees as to their working order or efficiency can be given.





















## 3 Bedroom End Terrace Villa

82 Meiklelaught Place, Saltcoats

Offers Over £



• 01294 466800

• [info@welcomehomesayrshire.co.uk](mailto:info@welcomehomesayrshire.co.uk)