



BLATCH
FINE HOMES

Tel: +44 (0) 24 7624 9333

info@blatchfinehomes.co.uk



Blackthorn Barn Bilton Fields Farm Lane

, Rugby, CV22 6RU

£1,150,000



4



4

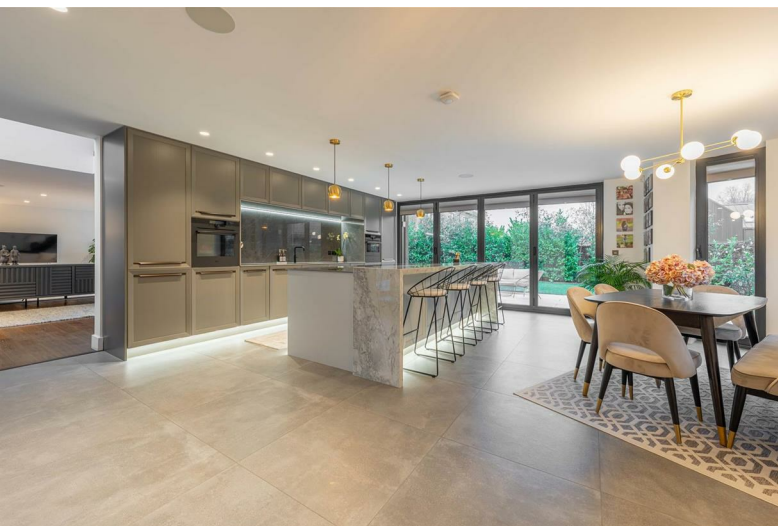


1



B

Blackthorn Barn Bilton Fields Farm Lane



Description

BLOCK VIEWINGS SATURDAY 17TH JANUARY FROM 11AM - Please contact the office to confirm your attendance.

Blackthorn Barn - An Architectural Barn of Presence and Proportion, Designed for the Modern Way of Life

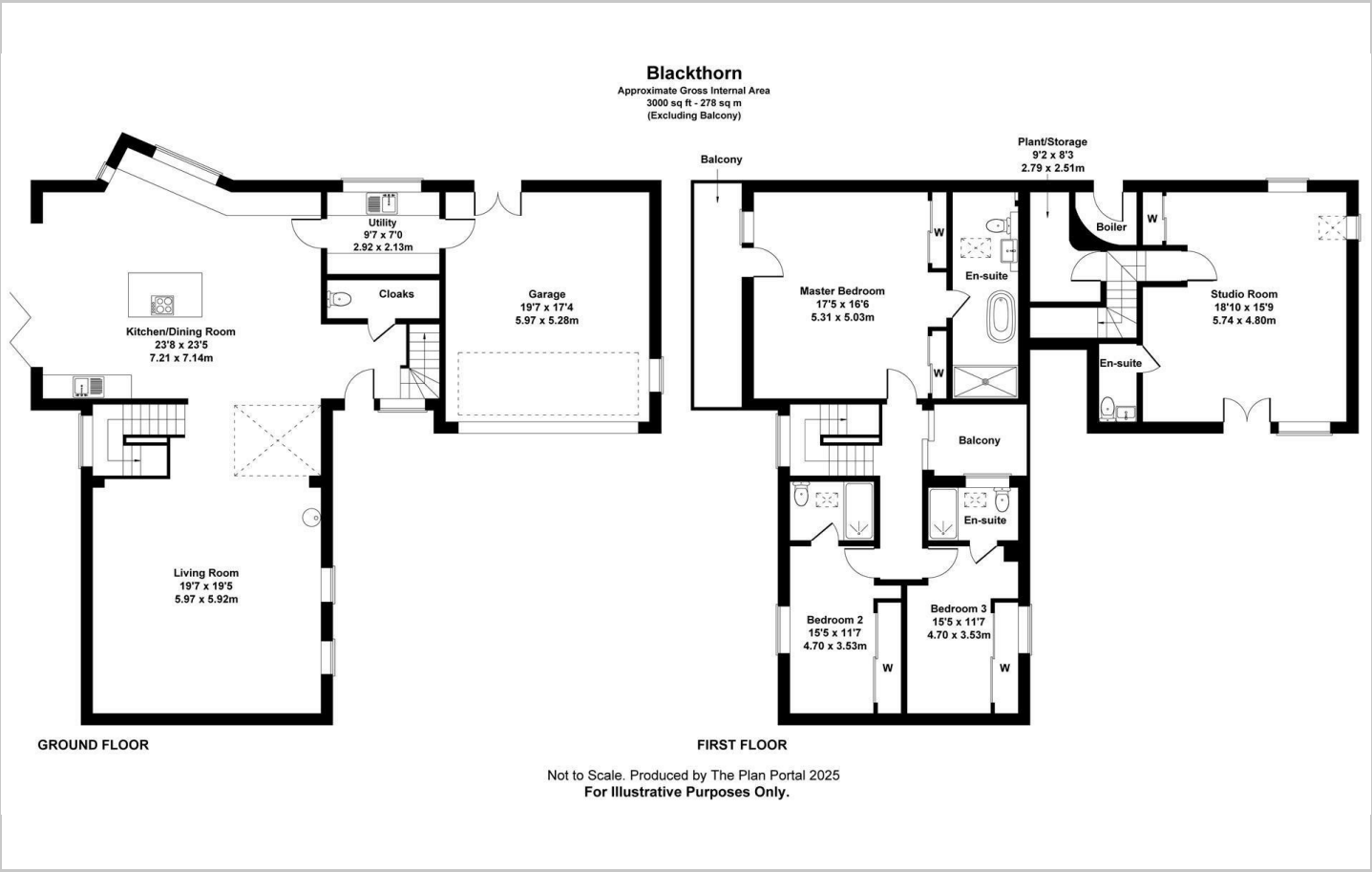
Occupying an enviable semi-rural position along the sought-after Ashlawn Road, Bilton Fields Farm is an exceptional contemporary home that combines striking modern architecture with refined, high-quality finishes throughout. Set within landscaped grounds and enjoying a sense of privacy and space, the property offers countryside living while remaining conveniently close to local amenities, schooling, and transport links.

- Blackthorn Barn benefits from a versatile studio annex with its own private entrance
- Comprehensive security system including CCTV, video doorbell and Nest smoke alarms
- Award Winning Boben Construction
- Surrounded by woodland and countryside
- EC B
- Awarded the LABC Bricks Certificate in recognition of exceptional build quality and site management
- Covered by a 10-year LABC structural warranty
- Contemporary kitchen by Porcelanosa with x-tone worktops
- Enclosed private garden with patio and block-paved driveway

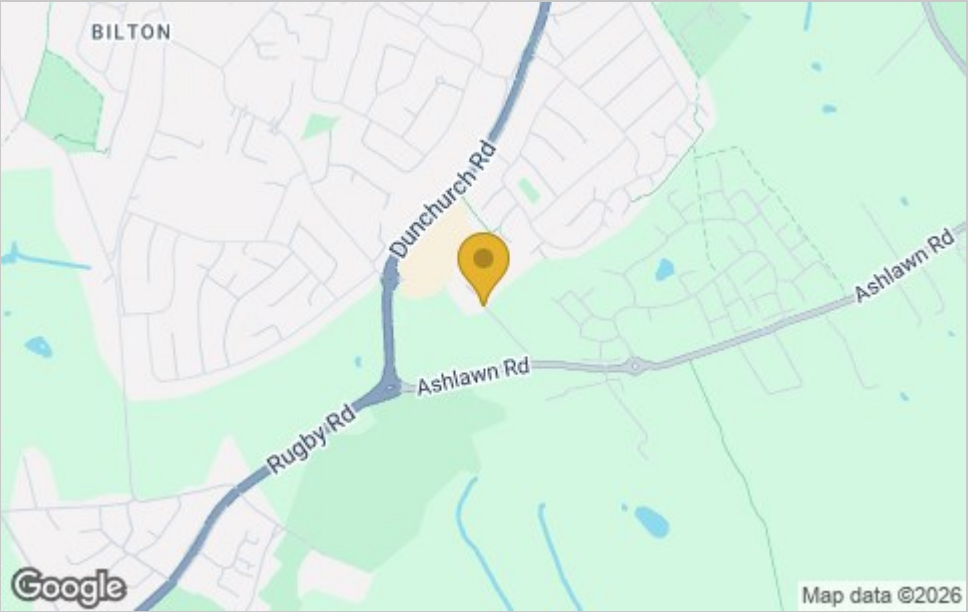




Floor Plan



Area Map



Viewing

Please contact our Coventry Office on 02476249333 if you wish to arrange a viewing appointment for this property or require further information.

These particulars, whilst believed to be accurate are set out as a general outline only for guidance and do not constitute any part of an offer or contract. Intending purchasers should not rely on them as statements of representation of fact, but must satisfy themselves by inspection or otherwise as to their accuracy. No person in this firms employment has the authority to make or give any representation or warranty in respect of the property.

Energy Efficiency Graph

