



BLATCH

FINE HOMES

Tel: +44 (0) 24 7624 9333

info@blatchfinehomes.co.uk



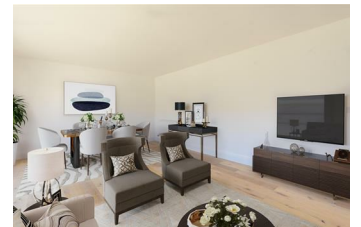
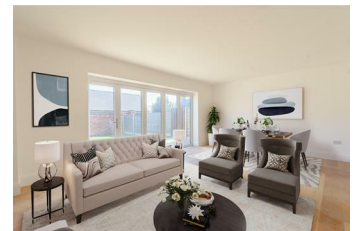
The Harebell Malkins Way, Birmingham, B46 2BW

Guide price £575,000



"Using "barn conversion" type dwellings as our architectural guide, we set out to create 14 bespoke homes that are in keeping with the surroundings of the green belt and agricultural farming land. The build is specifically designed for comfortable living with high standard bespoke finishings and parking space, as well as wide access roads nestled in the countryside "

- Five Bedroom Bespoke Home
- Countryside Setting
- Three Floors
- Enclosed garden
- approx 1920 sq ft
- Amongst a collection of 14 luxury Homes
- Double Garage
- No Chain



Blatch Fine Homes, Friars House, Manor House Drive, Coventry, CV1 2TE

Company No. 12134500 Registered in England and Wales