

The logo features a horizontal, brush-stroke style background in a light blue-grey color. The words "STOUR STREET" are written in a large, bold, black, hand-drawn font across the center of this background. Below it, the words "WEST BROMWICH" are written in a smaller, black, sans-serif font.

STOUR STREET

WEST BROMWICH



STOUR STREET

WEST BROMWICH

For Sale

Stour Street
West Bromwich,
B70 9AX

3 Bedroom
Semi-Detached
House

Description

Soul Estates are proud to present this well-presented 3-bedroom semi-detached house For Sale. This perfect family home is situated in a very popular area of West Bromwich, the property is perfect for families, first-time buyers, or investors with good schools and amenities situated close by.

The property is set back from the road, offers an entrance with stairs leading to the first floor and an entrance into the lounge which is located to the front of the property. Fitted extended family kitchen with a range of wall and base units to match, splashback tiling, with dining area. The ground floor also benefits a downstairs shower room.

Stairs leading to the first-floor landing which leads off to, two double bedrooms and a large single bedroom. The property also benefits from gas central heating and double glazing, a large rear garden and ample off-road parking to the front.



The finer details



A BEAUTIFULLY PRESENTED
SEMI-DETACHED FAMILY
HOME



THREE GOOD-SIZED
BEDROOMS



EXTENDED & REFITTED
KITCHEN WITH DINING AREA



LOUNGE



DOWNSTAIRS SHOWER ROOM



OFF-ROAD PARKING



GOOD SCHOOLS & LOCAL
AMENITIES



HIGHLY DEMANDED
LOCATION









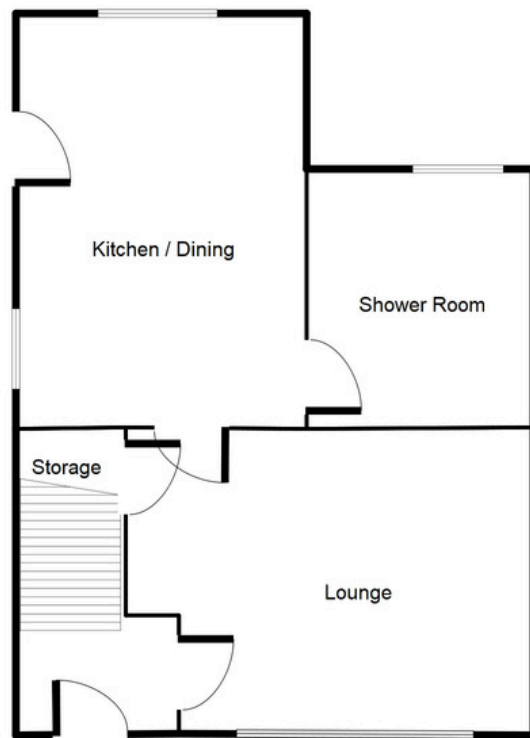






GROUND FLOOR FLOORPLAN

Ground Floor



This floorplan is just an example, this is not to scale.
Please see description for exact room sizes.
(c) Soul Estates

ENTRANCE HALL

2' 7" X 3' 11" (0.79M X 1.19M)

LOUNGE

12' 1" X 13' 9" (3.68M X 4.19M)

KITCHEN / DINER:

16' 2" X 10' 9" (4.92M X 3.27M)

SHOWER ROOM

8' 0" X 5' 7" (2.44M X 1.70M)

FIRST FLOOR FLOORPLAN

LANDING:

2' 10" X 8' 5" (0.86M X 2.56M)

BEDROOM ONE:

8' 10" X 13' 10" (2.69M X 4.21M)

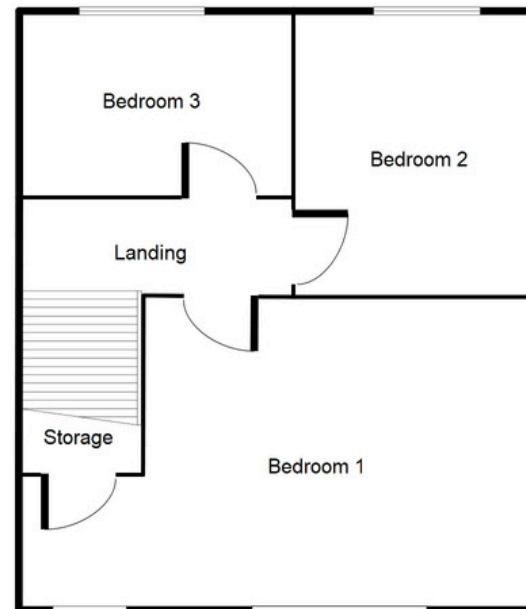
BEDROOM TWO:

11' 6" X 8' 1" (3.50M X 2.46M)

BEDROOM THREE

8' 2" X 8' 5" (2.49M X 2.56M)

First Floor



This floorplan is just an example, this is not to scale.
Please see description for exact room sizes.
(c) Soul Estates

STOUR STREET

WEST BROMWICH

CONTACT US

Soul Estates
20 Great Bridge
Tipton
DY4 7HA

0121 647 6779

www.soulestates.co.uk



SOUL ESTATES
SALES & LETTINGS