



SOUL ESTATES

SALES & LETTINGS

TO LET - 2 Bedroom House

John Sullivan Way, Oldbury, B69 3FU

£1,200 PCM

Soul Estates are proud to present this well-presented 2-bedroom semi-detached house To Let. This perfect family home is situated in a very popular area of Oldbury. Situated near Sandwell & Dudley Train Station with good schools, local amenities and transport links and close to Oldbury Sainsbury's.

The property offers an entrance hallway with rooms going off to a downstairs WC and large open-plan lounge, family kitchen with breakfast bar. Kitchen with a range of wall and base units to match, splashback, gas hob with an electric oven with integrated Fridge freezer and washing machine.

Stairs leading to the first-floor landing, which leads off to 2 double bedrooms and a family bathroom. The property also benefits from gas central heating and double glazing, low maintenance front and rear garden with off-road parking.

✓ **2 BEDROOM SEMI-DETACHED HOUSE**

✓ **OPEN PLAN KITCHEN & LIVING AREA**

✓ **DRIVEWAY & LARGE REAR GARDEN**

✓ **CLOSE TO OLDBURY TOWN CENTRE**



WWW.SOULESTATES.CO.UK | 0121 647 6779







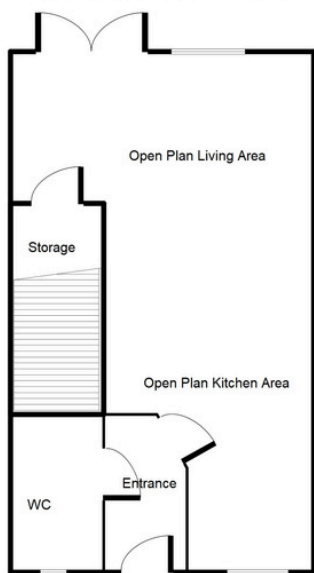
SOUL ESTATES

SALES & LETTINGS

TO LET - 2 Bedroom House

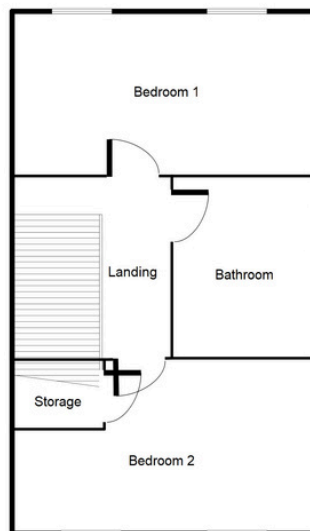
John Sullivan Way, Oldbury, B69 3FU

Ground Floor



This floorplan is just an example, this is not to scale.
Please see description for exact room sizes.
(c) Soul Estates

First Floor



This floorplan is just an example, this is not to scale.
Please see description for exact room sizes.
(c) Soul Estates

Entrance Hallway

5' 10" x 3' 6" (1.78m x 1.07m)

Open Plan Kitchen & Living Area

25' 9" x 13' 9" (7.84m x 4.19m)

WC

5' 10" x 3' 1" (1.78m x 0.94m)

First Floor Landing

6' 9" x 7' 1" (2.06m x 2.16m)

Bedroom 1

19' 3" x 13' 9" (2.82m x 4.19m)

Bedroom 2

8' 6" x 13' 9" (2.59m x 4.19m)

Bathroom

6' 9" x 6' 4" (2.06m x 1.93m)



SOUL ESTATES

SALES & LETTINGS

CONTACT US

Soul Estates
20 Great Bridge
Tipton
DY4 7HA

0121 647 6779

www.soulestates.co.uk

WWW.SOULESTATES.CO.UK | 0121 647 6779