

DR

DOROTHY ROAD

SMETHWICK

DR

DOROTHY ROAD
SMETHWICK

For Sale

Dorothy Road,
Smethwick, B67

3 Bedroom
End-Terraced House



Description

Soul Estates are proud to present this well-presented 3-bedroom End-Terrace house For Sale. This perfect family home is situated in a very popular area of Smethwick. Situated near Smethwick High Street, Rofle Street Train Station with good schools, local amenities and transport links and is close to Victoria Park and Capehill Asda.

The property offers an entrance Hall leading into the spacious first lounge, family kitchen with dining area. Newly fitted Kitchen with a range of wall and base units to match, splashback tiling, gas hob with an oven.

Stairs leading to the first-floor landing, which leads off to three bedrooms and a family bathroom. The property also benefits from gas central heating and double glazing, low maintenance front and rear garden with off-road parking.



The finer details



NEW REFURBISHED FAMILY HOME



3 BEDROOM END TERRACE HOUSE



SPACIOUS LOUNGE



LARGE KITCHEN & DINING ROOM



FAMILY BATHROOM



CENTRAL HEATING & DOUBLE GLAZING



DRIVEWAY



NEAR SMETHWICK HIGH STREET

Lounge



Kitchen



Landing



Bedroom 1



Bedroom 2



Bedroom 3



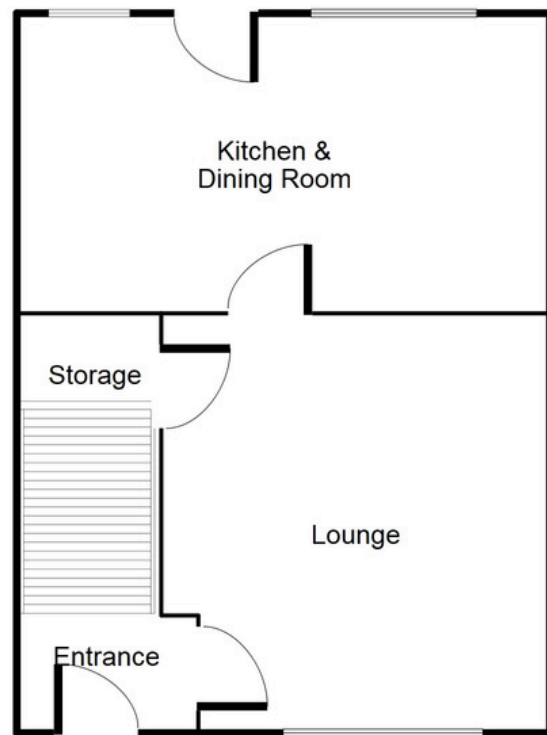
Family Bathroom





GROUND FLOOR FLOORPLAN

Ground Floor



This floorplan is just an example, this is not to scale.
Please see description for exact room sizes.
(c) Soul Estates

ENTRANCE HALLWAY

3' 1" X 3' 10" (0.94M X 1.17M)

LOUNGE

11' 10" X 12' 7" (3.60M X 3.83M)

KITCHEN / DINING ROOM

9' 11" X 16' 11" (3.02M X 5.15M)

FIRST FLOOR FLOORPLAN

LANDING

6' 3" X 5' 5" (1.90M X 1.65M)

BEDROOM ONE

10' 0" X 11' 2" (3.05M X 3.40M)

BEDROOM TWO

11' 11" X 8' 4" (3.63M X 2.54M)

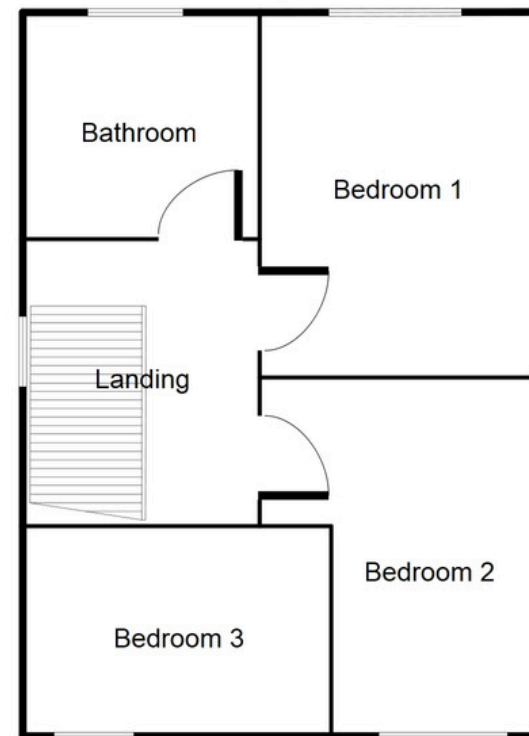
BEDROOM THREE

8' 8" X 8' 5" (2.64M X 2.56M)

BATHROOM

6' 10" X 5' 5" (2.08M X 1.65M)

First Floor



This floorplan is just an example, this is not to scale.
Please see description for exact room sizes.
(c) Soul Estates

DR

DOROTHY ROAD

SMETHWICK

CONTACT US

Soul Estates
20 Great Bridge
Tipton
DY4 7HA

0121 647 6779

www.soulestates.co.uk



SOUL ESTATES
SALES & LETTINGS