



SOUL ESTATES

SALES & LETTINGS

TO LET - GROUND FLOOR 1 BEDROOM FLAT

Hallam Street, West Bromwich, B71 4HQ

£800 PCM

Soul Estates are proud to present this well-presented 1 bedroom first floor Flat To Let in a very popular area of West Bromwich. The property is situated near Sandwell General Hospital with good schools, local amenities and transport links close to West Bromwich Town Centre and Sandwell Valley Country Park.

The property offers an entrance porchway leading into the hall with stairs leading to the family kitchen, bathroom, good size bedroom, spacious lounge to the front and a storage cupboard. Kitchen with a range of wall and base units to match, and splashback tiling. The property also benefits from gas central heating and double glazing with a low-maintenance front garden.

✓ **1 BEDROOM GROUND FLOOR FLAT**

✓ **SEPERATE LOUNGE**

✓ **FAMILY KITCHEN & BATHROOM**

✓ **NEAR SANDWELL GENERAL HOSPITAL**



WWW.SOULESTATES.CO.UK | 0121 647 6779





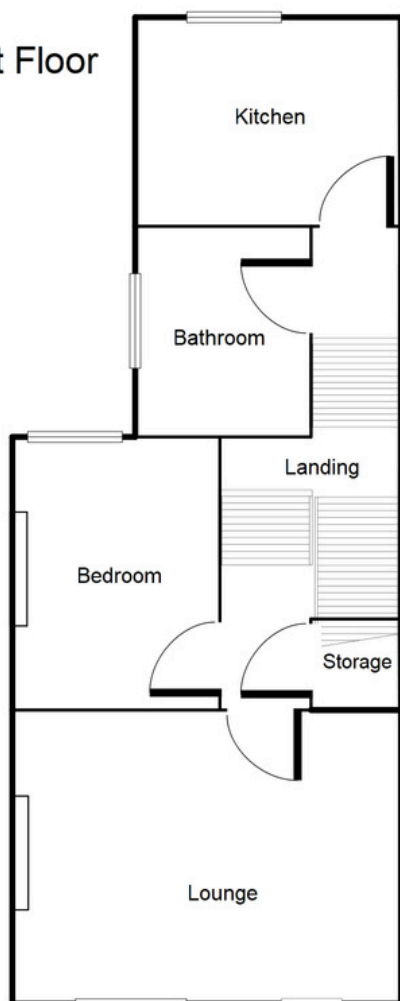
SOUL ESTATES

SALES & LETTINGS

TO LET - FIRST FLOOR 1 BEDROOM FLAT

Hallam Street, West Bromwich, B71 4HQ

First Floor



This floorplan is just an example, this is not to scale.
Please see description for exact room sizes.
(c) Soul Estates

Landing

21' 9" x 5' 7" (6.62m x 1.70m)

Lounge

13' 0" x 16' 0" (3.96m x 4.87m)

Bedroom

12' 8" x 9' 11" (3.86m x 3.02m)

Bathroom

5' 5" x 6' 0" (1.65m x 1.83m)

Kitchen

8' 10" x 9' 6" (2.69m x 2.89m)



SOUL ESTATES

SALES & LETTINGS

CONTACT US

Soul Estates
20 Great Bridge
Tipton
DY4 7HA

0121 647 6779

www.soulestates.co.uk

WWW.SOULESTATES.CO.UK | 0121 647 6779