



# SOUL ESTATES

## SALES & LETTINGS

### TO LET - 3 Bedroom House

**Quinton Road West, Quinton, B32 1PG**

**£1,300 PCM**

Soul Estates are proud to present this well-presented 3 bedroom semi-detached house To Let. This perfect family home is situated in a very popular area of Quinton. Situated near local amenities, within walking distance to four dwellings primary school and the local surgery also.

The property offers an entrance porchway leading into the hallway with rooms going off to the spacious lounge, family kitchen with dining area. Kitchen with a range of wall and base units to match, splashback tiling, gas hob with an electric oven and breakfast bar. Through the kitchen, you can enter a downstairs WC and additional storage.

Stairs leading to the first-floor landing which leads off to, two double bedrooms with cupboard space in each, then a further three bedrooms and a family bathroom. The property also benefits from gas central heating and double glazing, front and rear garden.

✓ **3 BEDROOM SEMI-DETAHCED HOUSE**

✓ **NEWLY REFURBISHED PROPERTY**

✓ **SPACIOUS KITCHEN WITH DINING ROOM**

✓ **IDEAL LOCATION**















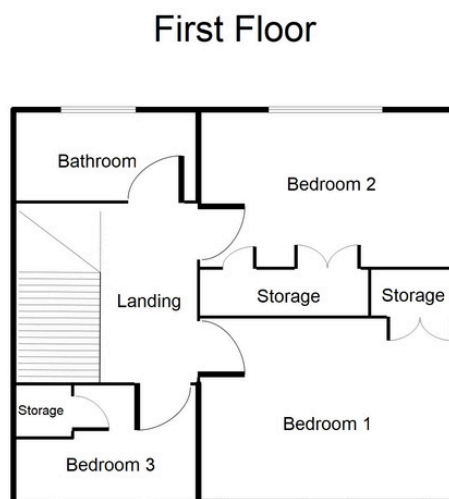
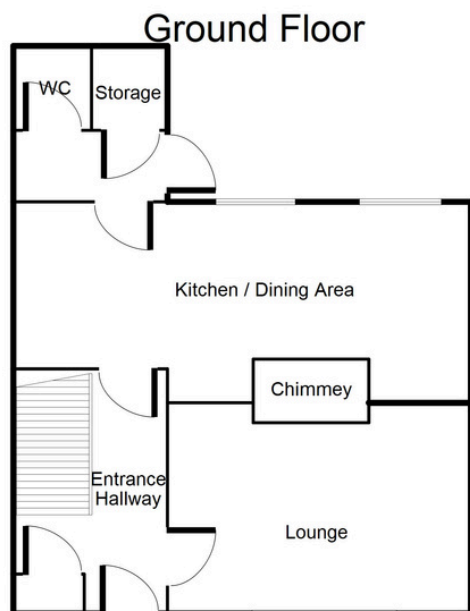




**SOUL ESTATES**  
SALES & LETTINGS

## TO LET - 3 Bedroom House

Quinton Road West, Quinton, B32 1PG



**Entrance Hallway**

13' 3" x 5' 11" (4.04m x 1.80m)

**Lounge**

11' 6" x 14' 4" (3.50m x 4.37m)

**Kitchen / Diner**

9' 7" x 20' 8" (2.92m x 6.29m) Approx

**WC**

5' 6" x 2' 8" (1.68m x 0.81m)

**First Floor Landing**

8' 0" x 7' 6" (2.44m x 2.28m)

**Bedroom 1**

11' 5" x 12' 4" (3.48m x 3.76m)

**Bedroom 2**

7' 11" x 12' 4" (2.41m x 3.76m)

**Bedroom 3**

8' 5" x 8' 0" (2.56m x 2.44m)

**Family Bathroom**

4' 10" x 8' 0" (1.47m x 2.44m)



**SOUL ESTATES**  
SALES & LETTINGS

### CONTACT US

Soul Estates  
20 Great Bridge  
Tipton  
DY4 7HA

0121 647 6779

[www.soulestates.co.uk](http://www.soulestates.co.uk)

WWW.SOULESTATES.CO.UK | 0121 647 6779