



SOUL ESTATES

SALES & LETTINGS

TO LET - 2 BEDROOM HOUSE

Earl Street, West Bromwich, B70 9HR

£1,100 PCM

Soul Estates are proud to present this well-presented 2-bedroom Mid-Terrace house To Let. This perfect family home is situated in a very popular area of West Bromwich. Situated near Dartmouth Street Metro Station with good schools, local amenities and transport links and close to West Bromwich High Street and town centre.

The property offers an entrance leading into the spacious lounge, family kitchen with dining area and downstairs WC and storage. Kitchen with a range of wall and base units to match, splashback tiling, gas hob with an electric oven

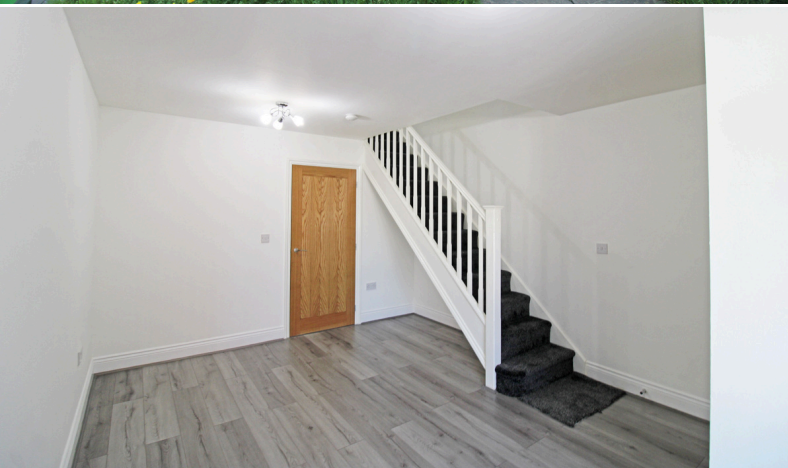
Stairs lead to the first-floor landing, which leads to two bedrooms and a family bathroom. The property also benefits from gas central heating and double glazing, low maintenance front and rear garden with off-road parking to the rear.

✓ **2 BEDROOM MID-TERRACED HOUSE**

✓ **KITCHEN & DINING ROOM WITH WC**

✓ **SPACIOUS LOUNGE**

✓ **CLOSE TO WEST BROMWICH HIGH STREET**









SOUL ESTATES

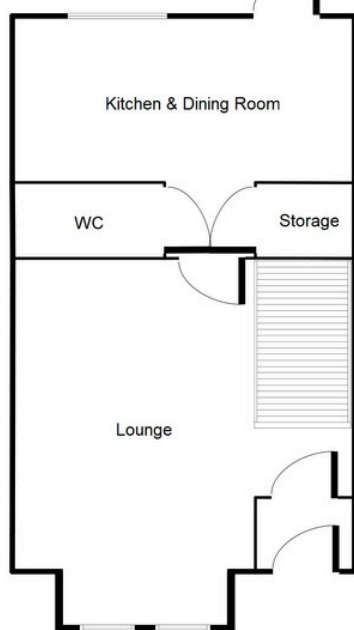
SALES & LETTINGS

TO LET - 2 BEDROOM HOUSE

Earl Street, West Bromwich, B70 9HR

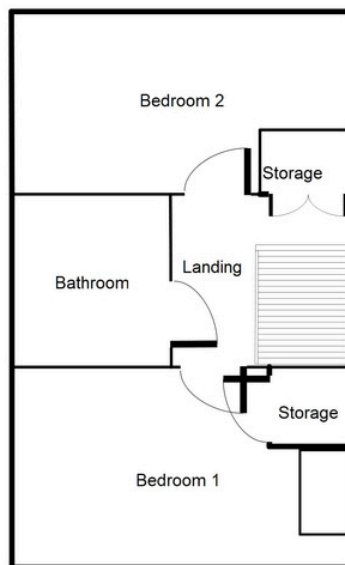
£1,100 PCM

Ground Floor



This floorplan is just an example, this is not to scale.
Please see description for exact room sizes.
(c) Soul Estates

First Floor



This floorplan is just an example, this is not to scale.
Please see description for exact room sizes.
(c) Soul Estates

Lounge:

16' 8" x 11' 8" (5.08m x 3.55m)

Kitchen / Dining Area:

8' 4" x 11' 8" (2.54m x 3.55m)

WC:

3' 2" x 5' 0" (0.96m x 1.52m)

Landing:

6' 0" x 6' 4" (1.83m x 1.93m)

Bedroom 1:

10' 9" x 11' 8" (3.27m x 3.55m)

Bedroom 2:

8' 0" x 11' 8" (2.44m x 3.55m)

Bathroom:

9' 5" x 3' 11" (2.87m x 1.19m)



SOUL ESTATES

SALES & LETTINGS

CONTACT US

Soul Estates
20 Great Bridge
Tipton
DY4 7HA

0121 647 6779

www.soulestates.co.uk

WWW.SOULESTATES.CO.UK | 0121 647 6779